

Genetic edge

ANCHOR D
Simmentals & Charolais

Friday, FEBRUARY 7, 2025
Anchor D Ranch, Rimbey, AB
Canada • 1:00 p.m.



Bull Sale

Genetic edge

We invite you to join us for lunch, hospitality and viewing the bulls prior to the sale!

February 7, 2025 • Lunch 11:30 am • Bull Sale 1:00 pm

Welcome to our 26th Annual Genetic Edge Bull Sale. What an exciting time to be in the Agricultural industry. Record prices have been seen all fall long on feeder and slaughter cattle, with really no sight of that changing anytime soon. I mentioned last year the bulls you purchased last spring will have the largest impact on your program ever. I'm not so sure that may be forwarded onto this spring's bulls as well. It was very obvious again this fall the big high performance calves demanded the premium, and the replacement heifers were a whole new level. It appears obvious the cow calf producer is prepared to expand, and are prepared to give a little extra for the right ones. Spending that little extra usually results in receiving a whole lot more in the end.

Our kids both had another exceptional year. I had a friend of ours say to me "boy your kids are kicking the old man's ass!" That is probably one of my proudest moments ever as a parent. Our kids are very focused and dedicated to this industry. This is very much like breeding cattle, we want the next generation to be better, so what this tells me is the future of Anchor D Ranch is poised and in a great position, as I see our kids elevating our program and taking it to another level. 40 plus years in this industry and the brightest days are ahead of us. I truly believe this is the strongest pen of bulls we have ever offered. Breeding cattle is a lot like building a Championship Sports team. Adding new genetics, tweaking old and existing ones to make them better. They are only as good as their competition, so we want to raise the bar on the front end of the pen making the whole pen better in the process. This pen is diverse in performance, calving ease, multi breeds and polled or horned genetics. Truly something for everyone. We have bred these cattle with the commercial cattleman in mind. We demand these cattle are able to go out and work for their new owners. Not only are these bulls structurally sound but they are developed in a manner where they get proper nutrition and exercise to ensure longevity. We have been very dedicated to building around cow families and sourcing the right herd bulls when necessary. These bulls have been culled through to ensure only the best of the best make the cut to impact your breeding programs.

When reading through the catalogue, we have tried to go through and give you a fair assessment on each bull in their write ups to help you make the proper choices. Please stop in or call to discuss your needs and let us help assist you in making your selection to come up with the right bull for your program. We would be more than happy to show you the bull pen. Videos will be posted prior to the sale and anyone unable to attend in person; please don't hesitate to contact ourselves or any of our staff to discuss your needs. You have heard us say this before; we don't just want to sell you one bull today. We want to sell you many bulls over time. We are committed to this relationship and are a part of your team. We look forward to seeing you sale day Friday, February 7th for our 26th annual sale.

Dan, Karen, Mackenzie & Garren Skeels

"Anchor D Simmentals striving for excellence in livestock production."



Trinity & Garren



Mackenzie & Cory



Sadie



Morgan, Rosie & Gary

www.anchordranch.com



Sale Staff

| | |
|---|----------------|
| Don Raffan (auctioneer) | (250) 558-6789 |
| Dean Edge (auctioneer) | (403) 704-0280 |
| Andrew Reeleder | (403) 848-1260 |
| Rod McLeod | (403) 540-7986 |
| Stan Skeels | (403) 704-0288 |
| Vold, Jones & Vold Auction Co | (403) 783-5661 |
| Craig Jacklin, Vold, Jones & Vold Auction | (403) 783-1453 |
| Roger Peters | (403) 828-9815 |
| Pour informations en francais - Bi-lingual Agent | |
| Marc Boisvert | (819) 395-5502 |

Additional Sale Day Phone Numbers

| | |
|-----------|----------------|
| Dan | (403) 783-1217 |
| Karen | (403) 704-4474 |
| Garren | (403) 704-5784 |
| Mackenzie | (403) 704-9981 |



| | |
|---------------|----------------|
| Darryl Snider | (780) 385-5561 |
| Nate Marin | (306) 869-7130 |
| Jaxon Payne | (306) 830-0456 |
| Scott Bohrson | (403) 370-3010 |

BID & View Auction online:

www.vjvauction.com

Click on the Sale Catalogue Link to view online

PLEASE CALL OUR SALE DAY PHONE NUMBERS TO BID



4410 - Hwy. 2A Ponoka AB, Canada, T4J 1J8
Phone: 403-783-5561 Fax: 403-783-4020 Email: office@vjvauction.com

For more information or assistance contact:

Craig Jacklin - (403) 783-1453



Welcome to the 26th annual Anchor D Ranch Genetic Edge Bull Sale. On behalf of the Skeels family and all of us at Bohrson Marketing, we wish to extend you this as your personal invitation to this great event. Year after year we see many familiar faces that sit in and purchase their next herd bulls from this great program and it is based off a 50/50 format. #1 the cattle are just that good and #2 and most importantly, the people are as good as you will find anywhere. When you choose to do business with the Skeels family, you are choosing salt of the earth folks that all eat, sleep and breath the livestock industry in many different outlets. When you become a customer of Anchor D Ranch, you are also becoming a lifelong family friend.

The 2025 set of sale bulls is nothing short of consistent. This is as deep in quality of a pen of bulls as we have ever seen assembled here and that is saying a lot. The Anchor D program demands that their cattle get out work for them and expect the same for the cattle they sell to their customers. These bulls are responsibly developed with longevity in mind and as you study the pedigrees of these bulls, you will see they have built them around many long standing and productive cow families as well as walking herd bulls that have bred cows naturally at Anchor D for 11+ years. Quite an impressive feat! This sale truly holds a place for everyone no matter what the conditions of their ranch is, big or small. If you need fullblood bulls, red bulls, black bulls, Charolais bull, polled bulls or horned bulls, the options will be endless on February 7, 2025.

We do highly encourage you to tour through the bull pen at Anchor D, anytime prior to the sale. Make plans to join us February 7th for this great bull sale and one of the most anticipated sale meals of the spring run. The combination of quality people, quality stock and quality hospitality make this a very fun atmosphere and a must attend sale of the spring. If any of us from BMS can be of any assistance

on sale day, please don't hesitate to reach out as we would be happy to answer any questions you may have.

Best Regards,

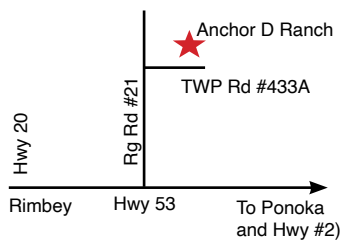
The Bohrson Marketing Team



Bull Photos and videos by:



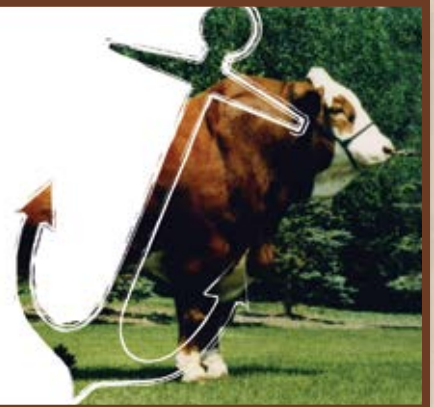
All winter born calves are weighed at birth on an actual scale. Summer born calves were weighed with a hoof tape at birth. Polled / Scurred status, all calf data is entered at birth. Scurred bulls will be registered as Polled even though they do have scurrs.



From Rimbey 1 1/2 miles North on Hwy #20, 3 miles East on Hwy 53, 3 1/2 miles North on Rg Rd #21, 1/4 mile East on Twp Rd #433A

ANCHOR D Simmentals Ltd.

Dan, Karen, Mackenzie & Garren Skeels
Box 1638 • Rimbey, AB T0C 2J0
Res: (403) 843-4756 • Cell: (403) 783-1217
anchorsimmentals@gmail.com



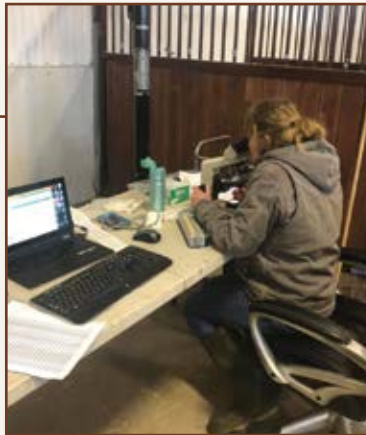
Feed & Bull Development

Our bulls are raised on a TMR ration, consisting of 2/3 cereal silage and 1/3 corn silage, as well as 10 lbs. of Bull Ration, and free choice mineral. They are raised in a 5 acre yard so they have lots of room for exercise, and are able to go out and cover the ground. We appreciate they could be fed to be bigger, but we also are very proud of the fact we have bulls still out working well into their early teens. The bulls will remain on the same ration up until delivery so they remain on a steady balanced diet to ensure proper development.



Health

All bulls are under the watchful eye of Gull Lake Veterinary Services. They receive Vitamin AD&E as well as MUSE at birth. Express 5 and Covexin Plus prior to grass, as well as Express 10, Presponse and Vision 8/ Somnugen, and boosters after weaning. Clean Up and Safeguard in November.



Delivery

\$100 OFF

Any bull picked up sale day

or

FREE DELIVERY

to Central Regions in Western Canada - other area delivery see Terms & Conditions for details

or

LEFT FREE OF CHARGE

at Anchor D Ranch Simmentals till April 1, 2025, see Terms and Conditions for complete details. Must be insured.



Sight Unseen Purchase Plan

We appreciate your bull purchase is a significant investment and can be very time consuming as well. We spend a significant amount of time with our cow herd, and the development of our bulls and are extremely confident in being able to match you with the bull/bulls you require for your own program. Please call us to discuss your options and needs for your herd, as we have a large selection and variety of bull suited for your individual program. We guarantee our sight unseen purchase program 100%. Call Dan to personally discuss your needs.

Sale Headquarters (ask for Anchor D Ranch block of rooms)

Quality Inn & Suites, Rimbey, AB 1-877-843-2999

Rimbey Ridge Hotel403-843-3808

Anyone anticipating they need rooms, book early as there are limited rooms available, also rooms will be available in Ponoka.

Anchor D Ranch Simmentals Influenced Calf Sales

Added value. We appreciate our customers, and recognize not only their investment into Anchor D Genetics, but your trust in our program as well. For the past several years we have been hosting the “Anchor D Simmental Influenced Calf Sales”, the first week of October. This allows feedlots to purchase large groups of calves with similar genetics, and health protocol in a timely fashion or producers wanting to capitalize on acquiring top end replacement females. This has become an extremely good marketing tool, especially on the replacement female end. This also allows for maximum dollars to be realized as it is added value for both buyer and seller. We are pleased to have added Charolais calves into the mix as well, so be sure to take advantage. For anyone interested in becoming a part of these sales please contact Dan for more details.

Tuesday, September 30, 2025 – VJV Rimbey, AB

Wednesday, October 1, 2025 – VJV Ponoka, AB

Thursday, October 2, 2025 – VJV Westlock, AB

Friday, October 3, 2025 – VJV Dawson Creek, BC



The bull feeding program is built to maximize forage utilization and gut health; they are developed on grass with their moms on a strict mineral program. All the forages are sampled and analyzed to ensure quality forages are used. Once the calves are weaned, they are slowly moved onto a balanced TMR.

The bulls are challenged with a forage-based TMR to help them develop and express their genetic potential. Matching suitable protein sources with proper starch is key to promoting lean muscle growth. Organic minerals are used to ensure proper immune function and overall health. If you have any questions about the nutrition program, please feel free to reach out. Buy with confidence knowing the bulls have been developed on a balanced nutrition program. Best of luck on sale day!



126E Canal Garden
Strathmore, Alberta
T1P 1Y4

© Here There Just Feed

1-866-948-4578
Fax: 403-450-8116
www.bullseyefeeds.ca



ANCHOR D Simmentals Ltd.

Pasture Treasures Female Sale
Friday, October 10, 2025 - 6:00 pm
Anchor D Ranch, Rimbey, AB

Our Fleckvieh division has been the mainstay of our program now for over 40 years. Hard to believe we've been at this that long but it all started with the purchase of a Fleckvieh bull, sired by none other than Sir Arnold 809G. That bull developed a passion and a vision for years to come.

We didn't sell our first bull until the spring of 1986, ironically enough he too was a Sir Arnold 809G son. We have always strived to produce early maturing, easy fleshing cattle, that are highly maternal, highly functional cattle that work for the commercial cattleman and the feedlot industry. This has been an unwavering goal for us, and is something we will not compromise.

Our herd has been developed around core cow families, and has relied very heavily on walking bulls. We certainly do utilize AI as well and embryo transplant to infuse outcrossed genetics into our herd, but as you will see when you look through the catalogue, the opportunity is there to purchase bulls from large proven sire groups. We are pleased to offer a wide range of type in both calving ease and performance as well as polled and horned genetics. As a group we are very confident in telling anyone if you are looking to add bulls that will contribute to the development of your cow herd we won't steer you away from any, as the cow herd is very maternally oriented, and both foot and udder structure along with temperament are culled for extremely heavily. Buy with confidence as this bull pen is 40+ years in the making.



Creed



French Attack



Sheamus



Mr. Gibbs



Bowman



Fort Knox



Yellowstone



Kingpin



Sarge



Precision



Radioactive



Barbossa



| | |
|------------|----------|
| BW | 114 lbs |
| Sept 1 Wt. | 870 lbs |
| Adj. WW | 803 lbs |
| Dec 15 Wt. | 1380 lbs |
| Adj. YW | 1581 lbs |
| WPDA | 4.18 lbs |



ANCHOR D MAGIC BEANS 167M

ZDS 167M CA-1473267 20-Jan-24 Full Fleckvieh

BAR 5 SA STRIDE 413P
ANCHOR D MR GIBBS 20Z
 ANCHOR D TYRA 20T

STARWEST POL BLUEPRINT
ANCHOR D GALILEA 167G
 ANCHOR D ELEANOR 495E

DORSIM MASSIE
 TOVERBERG ERIKA
 SOUTH SEVEN RAZZMATAZZ 7R
 ANCHOR D NUTMEG 3N
 ANCHOR "T" RUSTY 59G
 PHS HOMOZYGOUS XCEPTIONAL
 ANCHOR D RAPTOR 392C
 ANCHOR D MARTINI 247X

We have typically started the catalogue off each year with larger sire groups, well a little different this year as this was the final year for "Mr. Gibbs", as we have typically had a large pen of his sons. We had a small pen sorted off for him as father time had finally snuck up on him after 11 breeding seasons! He certainly decided to go out with a bang, as "Magic Beans" is his only bull calf, and maybe the best he has ever produced. He has been an absolute stud from the day he hit the ground and has the lineage to back it up, with not 1 but 4 of our main donor cows all right there in his pedigree in "Tyra, Ziley, Martini & Cher". Longevity, Maternal, Power, Structural Integrity, it doesn't get any better than "Magic Beans".



| | |
|------------|----------|
| BW | 110 lbs |
| Sept 1 Wt. | 720 lbs |
| Adj. WW | 772 lbs |
| Dec 15 Wt. | 1000 lbs |
| Adj. YW | |
| WPDA | 3.37 lbs |

2

ANCHOR D LANCO 119L

ZDS 119L CA-P1433516 25-Feb-23 Polled Full Fleckvieh

| | |
|---|---|
| DOUBLE BAR D CONFIDENCE 179D BLL CREED 950G BEE SUZETTE 478B | DOUBLE BAR D CHANDLER 143 DOUBLE BAR D LYNNEA 613Y ANCHOR D VIPER 103W VIRGINIA MS SUZIE FGAF BARBOSSA 707X JB CDN KANANASKIS 4019 DORA LEE TITAN FF11N DORA LEE CYNTHIA |
| FGAF WOVEFFECT 016A APLEGROSS CYNTHIA 19D DORA LEE CHRISTINA FF28S | |

"Lanco" was catalogued in last year's sale where he was entered as lot #8. He had white blood cells at the time of the sale, so we held him over, and we were lucky enough to not have to use him. So not only will you have the opportunity at a 2 year old but he is a virgin bull as well. A big powerful polled buckskin bull with a fabulous hair coat, and extra thickness, backed by an incredible cow. Use him on your red, white or tan cows. Cash the big steer cheque and keep some replacement females. Multiple options with this guy, and with the extra age he will cover that many more.



| | |
|------------|----------|
| BW | 84 lbs |
| Sept 1 Wt. | 950 lbs |
| Adj. WW | 781 lbs |
| Dec 15 Wt. | 1200 lbs |
| Adj. YW | 1162 lbs |
| WPDA | 3.33 lbs |

3

ANCHOR D MONSTERS INC 048L

ZDS 048L CA-P1472643 21-Dec-23 Polled Full Fleckvieh

| | |
|---|---|
| DOUBLE BAR D CONFIDENCE 179D BLL CREED 950G BEE SUZETTE 478B | DOUBLE BAR D CHANDLER 143 DOUBLE BAR D LYNNEA 613Y ANCHOR D VIPER 103W VIRGINIA MS SUZIE VIRGINIA WALKER 97W SIBELLE GOLDA |
| SIBELLE DIRTY HARRY 25Z FSMB EASTERN 18E WELDEHAVEN MS UNION FF 4U | BEL WESTERN UNION 5Z DREAMLAND ANTONIA FF 4P |

You can never have too many bulls in the pen like "Monsters Inc.". I have always been a huge fan of this bull, and we have mated his dam this way a few times before, with positive results. His full brother sold in last year's sale to Walt & Val Hedges, BC and one full sister the year before to Stone Hill Farms, and another retained in our own herd. His dam lost her calf as a first calver being born about a month premature. We milked her for a month until a twin became available which she took. That speaks volumes on this cow's disposition and mothering ability, she is frigten awesome! "Monsters Inc." will add growth, extra length a great pedigree and comes in a polled package. A bull I score very high.



| | |
|------------|----------|
| BW | 92 lbs |
| Sept 1 Wt. | 930 lbs |
| Adj. WW | 823 lbs |
| Dec 15 Wt. | 1325 lbs |
| Adj. YW | 1425 lbs |
| WPDA | 3.83 lbs |

4

ANCHOR D ADR COWBOY UP 555M

ADR 555M CA-1472721 04-Jan-24 Twin Full Fleckvieh

| | |
|--|---|
| DOUBLE BAR D CONFIDENCE 179D BLL CREED 950G BEE SUZETTE 478B | DOUBLE BAR D CHANDLER 143 DOUBLE BAR D LYNNEA 613Y ANCHOR D VIPER 103W VIRGINIA MS SUZIE MFI JEREMIAH 902Z MFI FRIEDA 3077 |
| DOUBLE BAR D INTUITION ANCHOR D GARREN'S ELISHA 555E ANCHOR D ZINOMA 357Z | BAR 5 SA STRIDE 413P ANCHOR D SINOMA 69S |



"Cowboy Up" is a big time performance bull. Garren showed this bull this summer, where he was the Reserve Champion Fullblood bull at the National YCSA show. His dam is an outstanding "Intuition" daughter. We are really appreciating the value this bull added to our program. He produced super sound cattle with big

feet, great leg structure, extra thickness, and outstanding hair. "Cowboy Up" should pass on all of these great qualities as well as the extra length and added performance from "Creed". He is a perfect genetic combination.



| | |
|------------|----------|
| BW | 101 lbs |
| Sept 1 Wt. | 770 lbs |
| Adj. WW | 710 lbs |
| Dec 15 Wt. | 1135 lbs |
| Adj. YW | 1267 lbs |
| WPDA | 3.44 lbs |

5 ANCHOR D MAGIC POTION 582M

ZDS 582M CA-P1473266 20-Jan-24 Polled Full Fleckvieh

DOUBLE BAR D CONFIDENCE 179D
BLL CREED 950G
 BEE SUZETTE 478B

FGAF RADIOACTIVE 030E
ANCHOR D GENEVIEVE 582G
 ANCHOR D ELIZABETH 268E

DOUBLE BAR D CHANDLER 143
 DOUBLE BAR D LYNNEA 613Y
 ANCHOR D VIPER 103W
 VIRGINIA MS SUZIE
 FGAF GUERRERO 810Y
 STARWEST ANGEL
 VIRGINIA PRECISION 16C
 ANCHOR D AVIANA 383C

"Magic Potion" is one of my personal favorite bulls in this year's sale. This is a bull I really appreciated all summer long, and then when he hit the weaning pen he really started to pop. His full brother "Kasino" was sold a few years ago being from "Creed's" very first calf crop selling to Madge Simmentals. Tanner sold his very first daughter this fall at the Western Harvest Sale and has nothing but good to say about the bull. This is a bull I feel has a big future ahead of him in the breed. Phenotypically he is right, pedigree is right, and well the fact that he is polled sure doesn't hurt either. "Magic Potion" will be a name you will remember for years to come.



| | |
|------------|----------|
| BW | 93 lbs |
| Sept 1 Wt. | 795 lbs |
| Adj. WW | 714 lbs |
| Dec 15 Wt. | 1100 lbs |
| Adj. YW | 1178 lbs |
| WPDA | 3.26 lbs |

6 ANCHOR D MONOPOLY 191M

ZDS 191M CA-P1472882 13-Jan-24 Polled Full Fleckvieh

DOUBLE BAR D CONFIDENCE 179D
BLL CREED 950G
 BEE SUZETTE 478B

FGAF FRENCH ATTACK 010C
ANCHOR D FAWN 191F
 ANCHOR D DAWN 106D

DOUBLE BAR D CHANDLER 143
 DOUBLE BAR D LYNNEA 613Y
 ANCHOR D VIPER 103W
 VIRGINIA MS SUZIE
 SIBELLE DIRTY HARRY 25Z
 VIRGINIAS JANE WEST
 STARWEST POL BLUEPRINT
 ANCHOR D RACHEL 123R

I get in trouble from Karen when I tell negative stories, but this story has a positive ending. Third times a charm if you will. I absolutely love this bull's mother, I feel she is close to perfect as they come. Because we have very limited semen on "Barbossa" only the true special ones get bred that way anymore. As a first calver she produced an outstanding "Barbossa" daughter, who I felt really needed to be showcased in our production sale. She sold for \$28,000 to Ferme Erisa in Quebec and is now in their donor program. She followed with an equally impressive "Creed" daughter who we unfortunately lost on pasture, so we tried again and she had another power house who ended up getting injured and we were forced to ship, so here's where third times a charm comes to play "Monopoly" is a polled powerhouse. He is the real deal and he will get you past go and straight to Boardwalk. Have a close look he's the right kind.



| | |
|------------|----------|
| BW | 101 lbs |
| Sept 1 Wt. | 720 lbs |
| Adj. WW | 655 lbs |
| Dec 15 Wt. | 1135 lbs |
| Adj. YW | 1287 lbs |
| WPDA | 3.4 lbs |

7 ANCHOR D MATEAO 18M

ZDS 18M CA-1473211 16-Jan-24 Full Fleckvieh

DOUBLE BAR D CONFIDENCE 179D
BLL CREED 950G
 BEE SUZETTE 478B

FGAF FRENCH ATTACK 010C
ANCHOR D SONITA 18F
 ANCHOR D SONITA 117N

DOUBLE BAR D CHANDLER 143
 DOUBLE BAR D LYNNEA 613Y
 ANCHOR D VIPER 103W
 VIRGINIA MS SUZIE
 SIBELLE DIRTY HARRY 25Z
 VIRGINIAS JANE WEST
 KNIGHTS THUNDER 246S
 DEMBY HERLINDE 154X

If you have ever thumbed through some of our old catalogues, you will have seen me state more than once that, "Sonita" the grand dam of "Mateao" was my favorite cow. She has been gone now for several years, but her influence still lives on. "Mateao" isn't the biggest bull in the pen, but has all the credentials to make him a contender. An absolutely stacked pedigree. The longevity and maternal traits are second to none. He is a lighter colored bull so I'm going to make a suggestion. For those of you wanting to keep the buckskin advantage but still want to retain females this is your ticket. He very well could sire those big tan steer calves, but as an added bonus you will still have the option to keep daughters. A true win win scenario.

Full Brothers

DOUBLE BAR D CONFIDENCE 179D
BLL CREED 950G
 BEE SUZETTE 478B

FGAF FRENCH ATTACK 010C
GARREN'S GISELE 28F
 GARREN'S JEZEBEL 24C

DOUBLE BAR D CHANDLER 143
 DOUBLE BAR D LYNNEA 613Y
 ANCHOR D VIPER 103W
 VIRGINIA MS SUZIE
 SIBELLE DIRTY HARRY 25Z
 VIRGINIAS JANE WEST
 FGAF BARBOSSA 707X
 GARREN'S CLARABELLE 26A

"Bazinga, Zuko, & Heisenberg" are all embryo flush mates and "Mega Mind" is also a full brother, being the natural calf from "Gisele". These 4 bulls are all full brothers to "Pheobe" and full brothers by blood to the \$100,000 bull "Krush" who was sold to Double Bar D. These bulls will all add that extra rib shape and dimension. They are broad topped thick made bulls that still have great shape to offer some calving ease as well. The offspring they produce will have lots of muscle and style, tremendous foot structure, longevity and ease of fleshing. I think the male progeny will be masculine, powerful individuals, and the females will be beautifully sculpted females with picture perfect udders. Regardless if you are looking for horned or polled genetics the options are here.



| | |
|------------|----------|
| BW | 101 lbs |
| Sept 1 Wt. | 820 lbs |
| Adj. WW | 771 lbs |
| Dec 15 Wt. | 1190 lbs |
| Adj. YW | 1334 lbs |
| WPDA | 3.66 lbs |

8 **ANCHOR D BAZINGA 503M**
 ZDS 503M CA-T1473500 25-Jan-24 **Full Fleckvieh**



| | |
|------------|----------|
| BW | 103 lbs |
| Sept 1 Wt. | 725 lbs |
| Adj. WW | 675 lbs |
| Dec 15 Wt. | 1075 lbs |
| Adj. YW | 1208 lbs |
| WPDA | 3.28 lbs |

9 **ANCHOR D ADR ZUKO 926M**
 ADR 926M CA-PT1473465 22-Jan-24 **Polled Full Fleckvieh**



| | |
|------------|----------|
| BW | 106 lbs |
| Sept 1 Wt. | 775 lbs |
| Adj. WW | 762 lbs |
| Dec 15 Wt. | 1045 lbs |
| Adj. YW | 1173 lbs |
| WPDA | 3.33 lbs |

10 **ANCHOR D ADR HEISENBERG 302M**
 ADR 302M CA-PT1473537 05-Feb-24 **Polled Full Fleckvieh**



| | |
|------------|----------|
| BW | 74 lbs |
| Sept 1 Wt. | 650 lbs |
| Adj. WW | 633 lbs |
| Dec 15 Wt. | 970 lbs |
| Adj. YW | 1121 lbs |
| WPDA | 3 lbs |

11 **ANCHOR D ADR MEGA MIND 28M**
 ADR 28M CA-P1473507 27-Jan-24 **Polled Full Fleckvieh**



Gisele - Dam to Lots 8 to 11
and Grand Dam of Lots 12 & 13
Full sibling to Lot 24



Phoebe - Full Sister to Lots 8 to 11
and Dam of Lot 13



Bellacuisse
Full Sibling by blood to Lots 8 - 11



| | |
|------------|----------|
| BW | 102 lbs |
| Sept 1 Wt. | 810 lbs |
| Adj. WW | 710 lbs |
| Dec 15 Wt. | 1110 lbs |
| Adj. YW | 1168 lbs |
| WPDA | 3.19 lbs |

12 ANCHOR D ADR METALIC CAT 327M

ADR 327M CA-P1472696 02-Jan-24 Polled Full Fleckvieh

| | |
|---------------------------------------|---------------------------|
| DOUBLE BAR D CONFIDENCE 179D | DOUBLE BAR D CHANDLER 143 |
| BLL CREED 950G | DOUBLE BAR D LYNNEA 613Y |
| BEE SUZETTE 478B | ANCHOR D VIPER 103W |
| | VIRGINIA MS SUZIE |
| FGAF RADIOACTIVE 030E | FGAF GUERRERO 810Y |
| ANCHOR D GARREN'S PANDORA 327H | STARWEST ANGEL |
| GARREN'S GISELE 28F | FGAF FRENCH ATTACK 010C |
| | GARREN'S JEZEBEL 24C |

"Metallic Cat" is a bull who has so many options. We've talked about the cow family, but have now added another element through "Radioactive". Essentially the same pedigree as "Gus" (lot #13) just moved around into different quadrants of his pedigree. This is a bull that was a favorite all summer long on the pasture and is going to develop into a power house. A bull you will be able to use on a wide spectrum of cows, he will be very complimentary, but put his own signature on a calf crop.



| | |
|------------|----------|
| BW | 88 lbs |
| Sept 1 Wt. | 785 lbs |
| Adj. WW | 765 lbs |
| Dec 15 Wt. | 1095 lbs |
| Adj. YW | 1237 lbs |
| WPDA | 3.22 lbs |

13 ANCHOR D ADR GUSTAVO 20M

ADR 0327M CA-P1472771 10-Jan-24 Polled Full Fleckvieh

| | |
|-------------------------------------|------------------------------|
| FGAF GUERRERO 810Y | FGAF SELDOM 835L |
| FGAF RADIOACTIVE 030E | NOSSATERRA REAL WISH 69U |
| STARWEST ANGEL | DOUBLE BAR D SPITFIRE 20X |
| | DOUBLE BAR D BARBL 506W |
| BLL CREED 950G | DOUBLE BAR D CONFIDENCE 179D |
| ANCHOR D GARREN'S PHOEBE 20K | BEE SUZETTE 478B |
| GARREN'S GISELE 28F | FGAF FRENCH ATTACK 010C |
| | GARREN'S JEZEBEL 24C |

"Gustavo" aka "Gus" is one of this year's star attractions. There is likely no one in the pen with more personality. He was a huge hit at this year's World Tour, where he served as a backdrop in many photos and selfies with "Gus". His dam "Pheobe" has the same look at me attitude, and had a stellar show career for Garren. Many of you may remember her as his trick show heifer, as she showed herself when Garren did a walkabout around her.

"Gus" is this year's lone "Radioactive" in the sale, so he offers calving ease, but also look at the numbers he put up. This bull has got some serious go in him, ranking #16 out of #132 for weaning weight. Not shabby for a calving ease bull, and since weaning he has upped the ante. He is everybody's friend but don't be fooled this bull is all business.



| | |
|------------|----------|
| BW | 112 lbs |
| Sept 1 Wt. | 760 lbs |
| Adj. WW | 714 lbs |
| Dec 15 Wt. | 1185 lbs |
| Adj. YW | 1362 lbs |
| WPDA | 3.61 lbs |

14

ANCHOR D MARLBORO 163M

ZDS 163M CA-PT1473471 22-Jan-24

Homozygous Polled Full Fleckvieh

DOUBLE BAR D CONFIDENCE 179D
BLL CREED 950G
 BEE SUZETTE 478B
 FGAF BARBOSSA 707X
ANCHOR D ZILEY 392Z
 HEMR MILEY 7W

DOUBLE BAR D CHANDLER 143
 DOUBLE BAR D LYNNEA 613Y
 ANCHOR D VIPER 103W
 VIRGINIA MS SUZIE
 PROSTOCK HUGO 7052T
 FGAF BARBARELLA 839L
 CEN THROTTLE 502T
 R-FIVE NAKEISHA



Dam to Lots 14 & 15

"Marlboro & Yahtzee" come from our main donor cow "Ziley". She is a cow who is no stranger to leading the pack, having produced our high selling bull or female on more than one occasion, and still sitting in excess of over a \$25,000 average on her progeny. Her most notable son "Raptor" who sold to Ferme Gagnon & Canadian Sires, has certainly had a huge impact on the breed. Other sons that have went to Registered herds include, "Sonic" (Ashby Farms), "Twisted X" (Diamond B) & "Abracadabra" (Stone Simmentals) who was joint high seller in last year's bull sale and a full brother to "Marlboro". Her most notable daughter has no doubt been "Jacqueline" former high seller to Starwest Farms, and now leads their donor program. This is a pair of bulls that are absolutely rock solid in genetic makeup and coming from two of the best bulls that have ever worked our pastures in "French Attack & Creed". They are bulls that will both add the important "P's". Power, pounds, pedigree and are Polled Powerhouses. Put one or both to work in your program.



| | |
|------------|----------|
| BW | 106 lbs |
| Sept 1 Wt. | 830 lbs |
| Adj. WW | 764 lbs |
| Dec 15 Wt. | 1155 lbs |
| Adj. YW | 1260 lbs |
| WPDA | 3.47 lbs |

15

ANCHOR D YAHTZEE 539M

ZDS 539M CA-PT1473217 17-Jan-24 **Polled Full Fleckvieh**

SIBELLE DIRTY HARRY 25Z
FGAF FRENCH ATTACK 010C
 VIRGINIAS JANE WEST

FGAF BARBOSSA 707X
ANCHOR D ZILEY 392Z
 HEMR MILEY 7W

VIRGINIA WALKER 97W
 SIBELLE GOLDA
 CHAMPS ROMANO
 VIRGINIA'S MS WEST PATTY
 PROSTOCK HUGO 7052T
 FGAF BARBARELLA 839L
 CEN THROTTLE 502T
 R-FIVE NAKEISHA



| | |
|------------|----------|
| BW | 86 lbs |
| Sept 1 Wt. | 750 lbs |
| Adj. WW | 625 lbs |
| Dec 15 Wt. | 1135 lbs |
| Adj. YW | 1212 lbs |
| WPDA | 3.18 lbs |

16

ANCHOR D TETON 575L

ZDS 575L CA-P1472647 24-Dec-23 **Polled Full Fleckvieh**

SIBELLE DIRTY HARRY 25Z
FGAF FRENCH ATTACK 010C
 VIRGINIAS JANE WEST

FGAF BARBOSSA 707X
ANCHOR D BARBARELLA 575F
 FGAF PRECIOUS THING 402T

VIRGINIA WALKER 97W
 SIBELLE GOLDA
 CHAMPS ROMANO
 VIRGINIA'S MS WEST PATTY
 PROSTOCK HUGO 7052T
 FGAF BARBARELLA 839L
 R-FIVE MALTESE
 FGAF SHANTI 121P

"Teton" comes from a cow we feel will be an up and coming super star, and is slated to headline our donor pen in the near future. "Barbarella" is as close to her dam "Precious Thing" as I have seen. This past fall her daughter "Precious" was our lot we entered in the World sale, selling to Canadian Donors. Her only son to date has been "Park Avenue" one of our high sellers, selling to Croft Creek Ranch, BC. "Teton" is a bull who has all the bells and whistles. Dark Red, heavily pigmented, moderate birth weight, Polled and pedigree wrapped up in an all-star package. This is a bull with a very bright future.



| | |
|------------|----------|
| BW | 87 lbs |
| Sept 1 Wt. | 745 lbs |
| Adj. WW | 661 lbs |
| Dec 15 Wt. | 1145 lbs |
| Adj. YW | 1271 lbs |
| WPDA | 3.23 lbs |

17

ANCHOR D IMPERIUM 689L

ZDS 689L CA-1472653 27-Dec-23 **Full Fleckvieh**

SIBELLE DIRTY HARRY 25Z
FGAF FRENCH ATTACK 010C
 VIRGINIAS JANE WEST

BLACK GOLD FORT KNOX 12F
ANCHOR D LITA 689H
 SVS LOLITA 639D

VIRGINIA WALKER 97W
 SIBELLE GOLDA
 CHAMPS ROMANO
 VIRGINIA'S MS WEST PATTY
 STARWEST BRYCK
 MS BGS FLORA 81Z
 STARWEST POL BLUEPRINT
 DOUBLE BAR D 229Z

"Imperium" is a bull that really stood out for me as a calf. He is a very eye catching individual with excellent length, and depth of body. He is a bull that will sire an outstanding set of steers and an equally impressive set of heifer calves. I cannot brag about the "French Attack" cattle enough. They are cattle that will work for everyone, both bulls and females. When the replacement females are demanding the premiums they are a bull like this is worth his weight in gold offering calves of both sexes that will be sale toppers.



| | |
|------------|----------|
| BW | 87 lbs |
| Sept 1 Wt. | 750 lbs |
| Adj. WW | 669 lbs |
| Dec 15 Wt. | 1070 lbs |
| Adj. YW | 1157 lbs |
| WPDA | 3.04 lbs |

18

ANCHOR D MEDICINE MAN 456L

ZDS 456L CA-P1472661 29-Dec-23 **Polled Full Fleckvieh**

SIBELLE DIRTY HARRY 25Z
FGAF FRENCH ATTACK 010C
 VIRGINIAS JANE WEST

ANCHOR D SORCERER 8B
ANCHOR D GABBIE 456J
 ANCHOR D GABRIELLA 572G

VIRGINIA WALKER 97W
 SIBELLE GOLDA
 CHAMPS ROMANO
 VIRGINIA'S MS WEST PATTY
 ANCHOR D IMAX 250Y
 ANCHOR D BARCELONA 8Y
 FGAF RADIOACTIVE 030E
 ANCHOR D ELEONORA 568E

A different scenario with "Medicine Man". We typically look to the "French Attack" group as a pure power group. Well this is a bull who offers much more diversity in the calving aspect as well. The bottom side of his pedigree is stacked with calving ease. Still more than enough performance, and certainly no lack of maternal qualities, but "Medicine Man" could very well be just what the doctor ordered. Moderate birth weight on some young cows, but still reap the benefits of performance. Certainly not just a calving ease bull, and he comes to you in a Polled package.



| | |
|------------|----------|
| BW | 114 lbs |
| Sept 1 Wt. | 860 lbs |
| Adj. WW | 752 lbs |
| Dec 15 Wt. | 1260 lbs |
| Adj. YW | 1362 lbs |
| WPDA | 3.65 lbs |

19

ANCHOR D MUTOMBO 447M

ZDS 447M CA-1472719 05-Jan-24 **Full Fleckvieh**

SIBELLE DIRTY HARRY 25Z
FGAF FRENCH ATTACK 010C
 VIRGINIAS JANE WEST

BLACK GOLD MOOMBA 22B
ANCHOR D ALLEGRO 447E
 EAGLE-RIDGE TULSA 17T

VIRGINIA WALKER 97W
 SIBELLE GOLDA
 CHAMPS ROMANO
 VIRGINIA'S MS WEST PATTY
 SOUTHSEVEN MR ADONIS 96Z
 SALMON ARM ALPEN 2ND
 ANCHOR "T" IMPACT 2H
 SIMMERON JENESSA 3J

"Mutombo" is a big powerful bull that will certainly turn pounds into cash. This is a bull that was very popular this past summer at the World Simmental tour. He is a big, long bodied bull loaded with muscle shape and mass. His dam is a picture perfect female that is in show shape year round. We are very limited now on the number of "Moomba" daughters we have, and they are pretty special. This is a cow we have bred to a different bull every time and all of her calves have been front end contenders. No guess work here "Mutombo" will be as good as it gets.



| | |
|------------|----------|
| BW | 118 lbs |
| Sept 1 Wt. | 895 lbs |
| Adj. WW | 782 lbs |
| Dec 15 Wt. | 1215 lbs |
| Adj. YW | 1270 lbs |
| WPDA | 3.52 lbs |

20 ANCHOR D DISCO PARTY 87M

ZDS 87M CA-1472728 05-Jan-24 Full Fleckvieh

SIBELLE DIRTY HARRY 25Z
FGAF FRENCH ATTACK 010C
 VIRGINIAS JANE WEST

ANCHOR D MR GIBBS 20Z
ANCHOR D CHARDONNAY 87D
 ANCHOR D BECKHAM 386B

VIRGINIA WALKER 97W
 SIBELLE GOLDA
 CHAMPS ROMANO
 VIRGINIA'S MS WEST PATTY
 BAR 5 SA STRIDE 413P
 ANCHOR D TYRA 20T
 BLACK GOLD EPIC 14Z
 ANCHOR D SPICE GIRL 177U

I had mentioned on the previous bull that he was very popular at the World Tour this past summer, "Disco Party" was one of the star attractions. I would love to fill the pen with bulls just like him. Tremendous muscle, outstanding structure, backed by a phenomenal cow family, as dark red as they come, and what a hair coat. He has 2 full brothers working for Gene & Pam Riley as well as Leo Weib. His sister was also very popular in our female sale this fall selling to L4 Farm, as well as 2 in our own herd. Here's the chance to make "Disco Party" the life of the party in your herd.



| | |
|------------|----------|
| BW | 114 lbs |
| Sept 1 Wt. | 870 lbs |
| Adj. WW | 762 lbs |
| Dec 15 Wt. | 1270 lbs |
| Adj. YW | 1372 lbs |
| WPDA | 3.69 lbs |

21 ANCHOR D MACHISMO 317M

ZDS 317M CA-1472738 06-Jan-24 Full Fleckvieh

SIBELLE DIRTY HARRY 25Z
FGAF FRENCH ATTACK 010C
 VIRGINIAS JANE WEST

BLACK GOLD EPIC 14Z
ANCHOR D DESTINY 317D
 ANCHOR D AGUSTA 142U

VIRGINIA WALKER 97W
 SIBELLE GOLDA
 CHAMPS ROMANO
 VIRGINIA'S MS WEST PATTY
 ALLM COLOSSAL 25U
 CROSSROAD WHISPER 930W
 SOUTH SEVEN RAZZMATAZZ 7R
 ANCHOR D AGATHA 6N

The dam of "Machismo" would no doubt rank among one of our best. This cow has been as steady of producer for us as we have owned. Every one of her bulls to date has been at the front end of the pack with the exception of last years who was slated to be there and was shipped due an injury. She has had sons working for Nickel Farms, Dennis Herman, Cole Williams, and Javier Jauregui, Mexico as well as "Righteous" who worked for us and now strolls the pastures for Blair Torgerson. She has only given us one daughter, a full sister to "Machismo" who I deemed the untouchable heifer for 2022. This cow has calved every year between Jan 1 & 10, including a set of twins. Talk about consistency. Free advice if you are fortunate enough to own this bull, keep every daughter you can.



| | |
|------------|----------|
| BW | 83 lbs |
| Sept 1 Wt. | 770 lbs |
| Adj. WW | 720 lbs |
| Dec 15 Wt. | 1115 lbs |
| Adj. YW | 1246 lbs |
| WPDA | 3.3 lbs |

22 ANCHOR D MONARCH 686M

ZDS 686M CA-1472783 12-Jan-24 Full Fleckvieh

SIBELLE DIRTY HARRY 25Z
FGAF FRENCH ATTACK 010C
 VIRGINIAS JANE WEST

BLACK GOLD FORT KNOX 12F
ANCHOR D HURITA 686H
 RUMBA DA ZURITA

VIRGINIA WALKER 97W
 SIBELLE GOLDA
 CHAMPS ROMANO
 VIRGINIA'S MS WEST PATTY
 STARWEST BRYCK
 MS BGS FLORA 81Z
 BHR DUSTIN SA P762E
 BHR MITCHELLA M361

"Monarch" comes from a very nice young "Fort Knox" daughter. This isn't a cross we have done a lot, however as you can see with "Imperium & Monarch" it is a cross that works really well. A mating that moderates birth weight, while still adding extra growth, lots of style, muscle pattern and tremendous color. This will be a bull that will also leave behind a fabulous set of replacement females. Not only does the bottom side of his pedigree add extra longevity, but also supplies an outcross pedigree, coming from an outstanding old cow we purchased from Agro Zurita in Brazil, via Buzzard Hollow Ranch in Texas.



| | |
|------------|----------|
| BW | 107 lbs |
| Sept 1 Wt. | 800 lbs |
| Adj. WW | 800 lbs |
| Dec 15 Wt. | 1205 lbs |
| Adj. YW | 1418 lbs |
| WPDA | 3.89 lbs |

23

ANCHOR D MARIO 431M

ZDS 431M CA-1473551 09-Feb-24 Full Fleckvieh

SIBELLE DIRTY HARRY 25Z
FGAF FRENCH ATTACK 010C
 VIRGINIAS JANE WEST

ANCHOR D MR GIBBS 20Z
ANCHOR D DAKOTA 431D
 ANCHOR D ZEON 218Z

VIRGINIA WALKER 97W
 SIBELLE GOLDA
 CHAMPS ROMANO
 VIRGINIA'S MS WEST PATTY
 BAR 5 SA STRIDE 413P
 ANCHOR D TYRA 20T
 FGAF BARBOSSA 707X
 ANCHOR D NEON 146U

When both of our kids graduated we gave them unconditional pick of our heifer calves as their graduation gift. Garren chose "Esperanza" who happens to be a full sister to "Mario" as well as "Gibraltar" who was our 2nd high seller the year he sold, selling to DJ Farms in Ontario, now working for Ferme Gagnon in Quebec. So we keep trying to get another heifer for ourselves as that has been her only daughter ever. On the up side when you can produce bulls like this that is never a bad thing. So just know when looking at "Mario" his full sister was the #1 pick in her respective year, and well "Gibraltar" has etched his own story into the Simmental history books.



| | |
|------------|----------|
| BW | 83 lbs |
| Sept 1 Wt. | 830 lbs |
| Adj. WW | 736 lbs |
| Dec 15 Wt. | 1255 lbs |
| Adj. YW | 1384 lbs |
| WPDA | 3.61 lbs |

24

ANCHOR D ADR SPEAK EASY 24M

ADR 24M CA-1472654 02-Jan-24 Twin Full Fleckvieh

SIBELLE DIRTY HARRY 25Z
FGAF FRENCH ATTACK 010C
 VIRGINIAS JANE WEST

FGAF BARBOSSA 707X
GARREN'S JEZEBEL 24C
 GARREN'S CLARABELLE 26A

VIRGINIA WALKER 97W
 SIBELLE GOLDA
 CHAMPS ROMANO
 VIRGINIA'S MS WEST PATTY
 PROSTOCK HUGO 7052T
 FGAF BARBARELLA 839L
 VIRGINIA MAXIMUS
 GARREN'S TARA 21X

"Speak Easy" is without question one of this year's feature bulls, and is a bull that can easily be found at the front of the pack. The cross of "French Attack & Jezebel" is certainly nothing new as he has full brothers working for Trasks, Nelsons & last year's full brother going to Grimm Ranches, not to mention his full sisters "Gisele & Shenzi", both of whom have entered into Garren's donor pen. If I was only able to pick one cow in our entire herd to keep "Jezebel" would be the cow for me. I can't say much more than that. If you want to build a cow herd this is a corner stone bull to start with.



| | |
|------------|----------|
| BW | 108 lbs |
| Sept 1 Wt. | 840 lbs |
| Adj. WW | 735 lbs |
| Dec 15 Wt. | 1125 lbs |
| Adj. YW | 1169 lbs |
| WPDA | 3.22 lbs |

25

ANCHOR D ADR BELLMAN 529M

ADR 529M CA-1472648 01-Jan-24 Full Fleckvieh

SIBELLE DIRTY HARRY 25Z
FGAF FRENCH ATTACK 010C
 VIRGINIAS JANE WEST

FGAF BARBOSSA 707X
ANCHOR D GARREN'S BELLE 529H
 GARREN'S CLARABELLE 26A

VIRGINIA WALKER 97W
 SIBELLE GOLDA
 CHAMPS ROMANO
 VIRGINIA'S MS WEST PATTY
 PROSTOCK HUGO 7052T
 FGAF BARBARELLA 839L
 VIRGINIA MAXIMUS
 GARREN'S TARA 21X

"Bellman" is a bull not to be missed. This deep dark red monster is going to be a bull that may tend to get overshadowed a little in the pen just based on numbers, and I feel has as much potential as anyone in the pen. His dam "Belle" is a younger version on "Jezebel" who has had more time to prove herself. Well don't look past this cow, she is going to have an impact, and it may start right here. "Bellman" is a dark red super stout made bull loaded with hair and pedigree wise, well they don't come any better. Free advice you don't even need to look at him first to have a big check mark by him in the catalogue, he is one you need to see.



| | |
|------------|----------|
| BW | 109 lbs |
| Sept 1 Wt. | 750 lbs |
| Adj. WW | 779 lbs |
| Dec 15 Wt. | 1080 lbs |
| Adj. YW | |
| WPDA | 3.59 lbs |

26 ANCHOR D MANDOULAN 465M

ZDS 465M CA-1473575 18-Feb-24 Full Fleckvieh

SIBELLE DIRTY HARRY 25Z
FGAF FRENCH ATTACK 010C
 VIRGINIAS JANE WEST

FGAF BARBOSSA 707X
ANCHOR D DENAY 465D
 ANCHOR D ABBA 50A

VIRGINIA WALKER 97W
 SIBELLE GOLDA
 CHAMPS ROMANO
 VIRGINIA'S MS WEST PATTY
 PROSTOCK HUGO 7052T
 FGAF BARBARELLA 839L
 ANCHOR "T" LEGEND 7H
 ANCHOR D REBA 353Z

When it's not broke don't fix it. "Denay" is a cow that has ended up in "French Attack's" pen every year. This is a cross that just works. There are two full brothers working for Springside Colony as well as Blair & Sheryl Stone, and full sisters working in our own herd. "Mandoulan" is one of the youngest bulls in the pen, and he is a standout. Keep in mind sale day he will not even be a year old. You will notice due to his young age he never received an adjusted yearling weight, but he is a big time performance bull. I promise he will be a bull that you like sale day and when he goes to work in the spring he will blow you away.



| | |
|------------|----------|
| BW | 112 lbs |
| Sept 1 Wt. | 800 lbs |
| Adj. WW | 696 lbs |
| Dec 15 Wt. | 1175 lbs |
| Adj. YW | 1267 lbs |
| WPDA | 3.37 lbs |

27 ANCHOR D ADR KICK START 401M

ADR 401M CA-P1472689 01-Jan-24 Polled Full Fleckvieh

ANCHOR D SHAZAM 318E
ANCHOR D SHEAMUS 457G
 ANCHOR D ELISHA 457E

BLACK GOLD EPIC 14Z
ANCHOR D BRANDY 401B
 ANCHOR D TYRA 20T

FGAF FRENCH ATTACK 010C
 ANCHOR D BETTANNA 318A
 SOUTHSEVEN MR ADONIS 96Z
 FGAF PRECIOUS THING 402T
 ALLM COLOSSAL 25U
 CROSSROAD WHISPER 930W
 SOUTH SEVEN RAZZMATAZZ 7R
 ANCHOR D NUTMEG 3N

Not the first time this cow has been bred to "Sheamus" and certainly won't be the last. This cross works. A full brother to "Kick Start" sold in last year's sale, selling to KGM Welding. This is a big powerful polled bull that won't just add that extra punch of power into his calves, but also traces back to the great cow family "Tyra". A bull that offers so much diversity in giving those big heavy weaning steers, adding the front end replacement heifers and the ability to make many of them polled in the process. He is a bull that will work on any size, shape or breed of cows, and will "Kick Start" any program.



| | |
|------------|----------|
| BW | 107 lbs |
| Sept 1 Wt. | 745 lbs |
| Adj. WW | 683 lbs |
| Dec 15 Wt. | 1105 lbs |
| Adj. YW | 1232 lbs |
| WPDA | 3.33 lbs |

28 ANCHOR D DUBLIN 150M

ZDS 150M CA-P1473247 18-Jan-24 Polled Full Fleckvieh

ANCHOR D SHAZAM 318E
ANCHOR D SHEAMUS 457G
 ANCHOR D ELISHA 457E

APLX WAYLON 8C
EAGLE RIDGE FALINA 105F
 EAGLE RIDGE ALINA 58A

FGAF FRENCH ATTACK 010C
 ANCHOR D BETTANNA 318A
 SOUTHSEVEN MR ADONIS 96Z
 FGAF PRECIOUS THING 402T
 FGAF WOVEFFECT 016A
 APPLCROSS CASSIE 19Z
 MACKENZIE'S CANE 122Y
 SILVERLAKE MISS MOO

Last year the maternal brother to "Dublin", "Kurfew", was one of our feature lots, selling to Nic & Camille Jenkins. Their dam is an awesome young cow that just gets better and better with time. "Dublin" is a smooth polled bull who gets that extra shot of power coming from "Sheamus". This is a bull that will just continue to add on the muscle mass, while still having extra eye appeal. Anyone wanting to benefit from the polled gene but not wanting to give up any extra muscle this will be your ticket.



| | |
|------------|----------|
| BW | 108 lbs |
| Sept 1 Wt. | 680 lbs |
| Adj. WW | 629 lbs |
| Dec 15 Wt. | 1145 lbs |
| Adj. YW | 1338 lbs |
| WPDA | 3.47 lbs |

29 ANCHOR D MONTAGE 352M

ZDS 352M CA-P1473270 20-Jan-24 Polled Full Fleckvieh

ANCHOR D SHAZAM 318E
ANCHOR D SHEAMUS 457G
 ANCHOR D ELISHA 457E

ROGANT
ANCHOR D FLORIS 352F
 MS DD&E STAR GAZER 21B

FGAF FRENCH ATTACK 010C
 ANCHOR D BETTANNA 318A
 SOUTHSEVEN MR ADONIS 96Z
 FGAF PRECIOUS THING 402T
 ROGER
 LORIS
 STAR PALM II
 BSBL 7Z

Performance wise "Montage" is a bit deceiving, as he was weaned in July as we noticed his dam was open, and with dry conditions we pulled our open cows early last year to save the grass we had. This was an absolutely outstanding young cow, a direct daughter of "Star Gazer", making her a sister to non-other than "Dorothy Jane". Last year she produced a fabulous heifer that was selected by Jenna Boyce for her 4H project, and I must admit I was a bit sad when "Montage" was a bull not a heifer as I would have loved a female from this young cow. A bit of a sale sleeper here in my mind but don't pass him by as he will be worth every penny invested.



| | |
|------------|----------|
| BW | 97 lbs |
| Sept 1 Wt. | 730 lbs |
| Adj. WW | 710 lbs |
| Dec 15 Wt. | 1100 lbs |
| Adj. YW | 1273 lbs |
| WPDA | 3.34 lbs |

30 ANCHOR D MACBETH 715M

ZDS 715M CA-1473455 21-Jan-24 Full Fleckvieh

ANCHOR D SHAZAM 318E
ANCHOR D SHEAMUS 457G
 ANCHOR D ELISHA 457E

VIRGINIA PRECISION 16C
ANCHOR D JAYCEE 715J
 ROCKING R MS DEE 11D

FGAF FRENCH ATTACK 010C
 ANCHOR D BETTANNA 318A
 SOUTHSEVEN MR ADONIS 96Z
 FGAF PRECIOUS THING 402T
 VIRGINIA RADISON 5Z
 BROCK YODA
 ROCKING R Z-MAN
 ROCKING R POL EXCELLENCE

As you will notice with most of the "Sheamus" calves they do tend to have a bit more birth weight, they are certainly a pen of bulls we pitch as performance bulls to use on your mature cows to add growth and muscle mass. Interestingly "Macbeth" has a more modest birth weight with an extra shot of calving ease coming from "Precision" on his dam's side. He is also a bull that will add that extra power and shape into his calves but just be a little more moderate at birth. A bull I would feel quite confident on using on young or mature cows still add those pounds and the color on this bull is truly outstanding. When clipping the coupon for replacement heifers this guy will give them that extra sharp look for a few more \$\$'s.



| | |
|------------|----------|
| BW | 113 lbs |
| Sept 1 Wt. | 800 lbs |
| Adj. WW | 746 lbs |
| Dec 15 Wt. | 1255 lbs |
| Adj. YW | 1439 lbs |
| WPDA | 3.84 lbs |

31 ANCHOR D ADR TOMMY GUN 526M

ADR 526M CA-P1473478 23-Jan-24 Polled Full Fleckvieh

ANCHOR D SHAZAM 318E
ANCHOR D SHEAMUS 457G
 ANCHOR D ELISHA 457E

BLACK GOLD EPIC 14Z
ANCHOR D GARREN'S ARIEL 526F
 GARREN'S CLARABELLE 26A

FGAF FRENCH ATTACK 010C
 ANCHOR D BETTANNA 318A
 SOUTHSEVEN MR ADONIS 96Z
 FGAF PRECIOUS THING 402T
 ALLM COLOSSAL 25U
 CROSSROAD WHISPER 930W
 VIRGINIA MAXIMUS
 GARREN'S TARA 21X

"Tommy Gun" is from a nice young cow of Garren's who is not a stranger to producing front enders. She has had 2 progeny in the sales, a bull for \$18,000, and a female this past fall for \$17,000. "Tommy Gun" certainly is a bull with a power packed pedigree, loaded with thickness, and extra growth. He will come with his guns loaded, as this bull will produce a smashing set of steers the feedlots will love to have and the cow family behind him to also produce the front end females. A bull that no doubt will deliver the best on both ends.



| | |
|------------|----------|
| BW | 99 lbs |
| Sept 1 Wt. | 660 lbs |
| Adj. WW | 636 lbs |
| Dec 15 Wt. | 985 lbs |
| Adj. YW | 1132 lbs |
| WPDA | 3.09 lbs |

32 ANCHOR D MACS MAUI 168M

MACS 168M CA-P1473521 31-Jan-24 Polled Full Fleckvieh

ANCHOR D SHAZAM 318E
ANCHOR D SHEAMUS 457G
 ANCHOR D ELISHA 457E

BLACK GOLD EPIC 14Z
ANCHOR D MACS LOLLI 168D
 MACKENZIE'S COTTON 367Z

FGAF FRENCH ATTACK 010C
 ANCHOR D BETTANNA 318A
 SOUTHSEVEN MR ADONIS 96Z
 FGAF PRECIOUS THING 402T
 ALLM COLOSSAL 25U
 CROSSROAD WHISPER 930W
 FGAF BARBOSSA 707X
 ANCHOR D CANDY 122W

"Maui" comes from an outstanding female who just never misses. She happened to raise a \$17,500 heifer this fall selling to Mac Oberle, and incidentally was one of Karen's favorite heifers in the whole pen. "Maui" will be a bit more moderate in size, and will add tons of thickness into his progeny. As you know I'm all about cow families, and this one comes from one of Mackenzie's best in "Candy", her very first 4H female. This cow was a license to print money. She never outright blew you away, but just consistently put marketable cattle into the sale pen or the herd. You could never have too many cows like her. "Maui" will be an outstanding bull.



| | |
|------------|----------|
| BW | 100 lbs |
| Sept 1 Wt. | 735 lbs |
| Adj. WW | 768 lbs |
| Dec 15 Wt. | 1185 lbs |
| Adj. YW | 1185 lbs |
| WPDA | 3.95 lbs |

33 ANCHOR D ALIBI 460M

ZDS 460M CA-P1473581 19-Feb-24 Polled Full Fleckvieh

ANCHOR D SHAZAM 318E
ANCHOR D SHEAMUS 457G
 ANCHOR D ELISHA 457E

ANCHOR D MAZOROTTI 19B
ANCHOR D DELORES 460D
 ANCHOR D ALENA 133A

FGAF FRENCH ATTACK 010C
 ANCHOR D BETTANNA 318A
 SOUTHSEVEN MR ADONIS 96Z
 FGAF PRECIOUS THING 402T
 BLACK GOLD EPIC 14Z
 ANCHOR D UNIQUE 19U
 FGAF BARBOSSA 707X
 ANCHOR D OLIVIA 320Z

"Alibi" is easily one of my favorite bulls in this year's pen. Have a look at his birth date, he is a youngster and has been a standout from day 1. His full brother sold in last year's sale to Grant Bailey, and was a bull that the kids showed. His mother is truly a front end cow, and is backed by non-other than the "Image 21J" cow. That is the cow responsible for the "Tyra" cow family. This cow was never flushed, and is responsible for the largest cow family in our herd. There is power in the pedigree here. Due to his young age he never received an adjusted yearling weight, but note he is the second heaviest WPDA bull in the pen. "Alibi" is a bull you will want to have a serious look at sale day as he is as good as they come.



| | |
|------------|----------|
| BW | 115 lbs |
| Sept 1 Wt. | 745 lbs |
| Adj. WW | 796 lbs |
| Dec 15 Wt. | 1090 lbs |
| Adj. YW | 1090 lbs |
| WPDA | 3.69 lbs |

34 ANCHOR D MACAULAY 859M

ZDS 859M CA-P1473588 24-Feb-24 Polled Full Fleckvieh

ANCHOR D SHAZAM 318E
ANCHOR D SHEAMUS 457G
 ANCHOR D ELISHA 457E

DOUBLE BAR D BANKER
VIRGINIA BRINLEY 859F
 BROCK YODA

FGAF FRENCH ATTACK 010C
 ANCHOR D BETTANNA 318A
 SOUTHSEVEN MR ADONIS 96Z
 FGAF PRECIOUS THING 402T
 MFI JEREMIAH 9022
 DOUBLE BAR D FEATHER 43W
 ANCHOR "T" METRO 4E
 BRK PLAY MATE

"Macaulay" is a full brother to our high selling heifer 2 years ago selling to Ferme Gagnon, PQ. His dam followed up with another full sister which we retained for ourselves, and now "Macaulay" being the third full sib. All three are deep powerful cattle with extra length and super thickness, and all three came polled as an added bonus. On paper they stack up well also, reading like a who's who in the breed, as his dam just so happens to be the maternal sister to "Precision". Very solid bull, with a very solid pedigree.



| | |
|------------|----------|
| BW | 104 lbs |
| Sept 1 Wt. | 790 lbs |
| Adj. WW | 807 lbs |
| Dec 15 Wt. | 1170 lbs |
| Adj. YW | 1386 lbs |
| WPDA | 3.59 lbs |

35

ANCHOR D MAGNUS 756M

ZDS 756M CA-P1473486 24-Jan-24 Polled Full Fleckvieh

PROSTOCK HUGO 7052T
FGAF BARBOSSA 707X
 FGAF BARBARELLA 839L

ANCHOR D SHEAMUS 457G
ANCHOR D JENNA LEE 756J
 ANCHOR D DAWN 106D

HERMANUS
 DOUBLE BAR D FLASHY 172R
 ANCHOR "T" LEGEND 7H
 RAJ MS ARNIE 46F
 ANCHOR D SHAZAM 318E
 ANCHOR D ELISHA 457E
 STARWEST POL BLUEPRINT
 ANCHOR D RACHEL 123R

"Magnus" will be the lone "Barbossa" son in this year's sale. We have a very limited supply on him so honestly only a select few get bred this way. His dam is one of my favorite young cows and I truly think "Magnus" is going to be stellar. If you break down our sale over the past several years, you won't find many of the high sellers being sons of "Barbossa", however you will find a big percentage of the high sellers come from his daughters. "Barbossa" was a bull we relied on so heavily as a calving ease bull, but his daughters are out of this world. "Magnus" is a bull I would highly recommend to keep as many daughters from as you possibly can, and you will absolutely adore the male calves he produces as well.



| | |
|------------|----------|
| BW | 101 lbs |
| Sept 1 Wt. | 670 lbs |
| Adj. WW | 595 lbs |
| Dec 15 Wt. | 1055 lbs |
| Adj. YW | 1182 lbs |
| WPDA | 3.09 lbs |

36

ANCHOR D MACS MEMPHIS 237M

MACS 237M CA-P1472762 09-Jan-24 Polled Full Fleckvieh

SIBELLE POL DARWIN 21F
STEADYBROOK FLIGHT SGT FF 4J
 TRYON TRICH FF32D

FGAF FRENCH ATTACK 010C
ANCHOR D MACS FORTUNE 237F
 ANCHOR D MACS VICTORIA

SIBELLE SPARTACUS 8A
 SIBELLE POL MOLLY 7B
 SOLWAY ADONIS
 TRYON GABI FF27U
 SIBELLE DIRTY HARRY 25Z
 VIRGINIAS JANE WEST
 FGAF BARBOSSA 707X
 ANCHOR D NATASHA 137A

The dam of "Memphis" raised last year's co-high seller in the sale, "Keystone", selling to Dobbie Simmentals in Ontario. Many of you may remember him as well as me saying he was my personal pick of the pen last year. "Memphis" is a smooth polled, heavy muscled bull, with exceptional body length. His dam is a powerful cow with as equally powerful of pedigree. This is going to be a bull that only continues to get better with time. If you want a heavy muscled polled bull "Memphis" will be music to your ears.



| | |
|------------|----------|
| BW | 115 lbs |
| Sept 1 Wt. | 805 lbs |
| Adj. WW | 738 lbs |
| Dec 15 Wt. | 1170 lbs |
| Adj. YW | 1295 lbs |
| WPDA | 3.52 lbs |

37

ANCHOR D MONUMENT 491M

ZDS 491M CA-P1473248 18-Jan-24 Polled Full Fleckvieh

SIBELLE POL DARWIN 21F
STEADYBROOK FLIGHT SGT FF 4J
 TRYON TRICH FF32D

BLACK GOLD EPIC 14Z
ANCHOR D GALATA 491G
 ANCHOR D ZEON 218Z

SIBELLE SPARTACUS 8A
 SIBELLE POL MOLLY 7B
 SOLWAY ADONIS
 TRYON GABI FF27U
 ALLM COLOSSAL 25U
 CROSSROAD WHISPER 930W
 FGAF BARBOSSA 707X
 ANCHOR D NEON 146U

The dam of "Monument" has been an outstanding producing cow for us. She has a daughter in our herd which ranks near the very top in her age group and produced a high selling bull in last year's sale as well. We only have the two "Sarge" sons in the sale. They are both going to be bulls that have extra length of spine and tons of muscle shape. If you want to add both of these qualities keep the growth and the possibility of making them polled in the process then this is a solid pair of bulls to look at.



| | |
|------------|----------|
| BW | 78 lbs |
| Sept 1 Wt. | 750 lbs |
| Adj. WW | 647 lbs |
| Dec 15 Wt. | 1095 lbs |
| Adj. YW | 1173 lbs |
| WPDA | 3.11 lbs |

38

ANCHOR D LAREDO 151L

ZDS 151L CA-1472663 29-Dec-23 Full Fleckvieh

VIRGINIA MARQUEE 423D
VIRGINIA BOWMAN 100H
 IPU MS. ROWEENA 100X

FGAF BARBOSSA 707X
ANCHOR D HONITA 151H
 ANCHOR D SONITA 18F

VIRGINIA RADISON 5Z
 VIRGINIA BRANDY 423B
 CHAMPS ROMANO
 AWL HELGA 3S
 PROSTOCK HUGO 7052T
 FGAF BARBARELLA 839L
 FGAF FRENCH ATTACK 010C
 ANCHOR D SONITA 117N

"Laredo" is a bull that offers something for everyone. A moderate birth weight bull that certainly boast calving ease in his pedigree. This is a bull I would feel quite confident in putting in any group of cows or heifers. He is very smooth built with a nice refined front end, yet still has enough performance to be so much more than just a calving ease bull. He honestly is a bull that I feel comfortable telling anyone to use on any type of cow he will be as close to bomb proof as they come. As an added bonus the maternal strengths of this bull are equally as impressive.



| | |
|------------|----------|
| BW | 92 lbs |
| Sept 1 Wt. | 740 lbs |
| Adj. WW | 637 lbs |
| Dec 15 Wt. | 1140 lbs |
| Adj. YW | 1247 lbs |
| WPDA | 3.27 lbs |

39

ANCHOR D MARSDEN 452M

ZDS 452M CA-1472692 01-Jan-24 Full Fleckvieh

VIRGINIA MARQUEE 423D
VIRGINIA BOWMAN 100H
 IPU MS. ROWEENA 100X

BOLD
ANCHOR D GENEVIEVE 452G
 ANCHOR D SAPHIRE 111S

VIRGINIA RADISON 5Z
 VIRGINIA BRANDY 423B
 CHAMPS ROMANO
 AWL HELGA 3S
 BASALT
 MORANDA
 SHAWACRES JAHARI 50L
 ANCHOR D HEBE 108K

An absolutely wicked pedigree in "Marsden". His dam is a female that comes from our embryo program. "Bold" cows hold a special place in my heart as they are super productive, and add lots of performance. Old school genetics for sure, and as you look deeper into this pedigree you discover that many more old school bulls in "Solway Adonis & Antonius" as well. This is a bull I really admire. He has a very user friendly birth weight, is very stylish and we've already touched on the pedigree. A bull that can be used on a huge variety of cows.



| | |
|------------|----------|
| BW | 83 lbs |
| Sept 1 Wt. | 760 lbs |
| Adj. WW | 671 lbs |
| Dec 15 Wt. | 1190 lbs |
| Adj. YW | 1327 lbs |
| WPDA | 3.44 lbs |

40

ANCHOR D MARINO 591M

ZDS 591M CA-1472709 04-Jan-24 Full Fleckvieh

VIRGINIA MARQUEE 423D
VIRGINIA BOWMAN 100H
 IPU MS. ROWEENA 100X

FGAF FRENCH ATTACK 010C
ANCHOR D HELENA 591H
 ANCHOR D BARCELONA 8Y

VIRGINIA RADISON 5Z
 VIRGINIA BRANDY 423B
 CHAMPS ROMANO
 AWL HELGA 3S
 SIBELLE DIRTY HARRY 25Z
 VIRGINIAS JANE WEST
 SMITHBILT MOLSON 21M
 ANCHOR D SERENITY 85S

As you will see with the "Bowman" bulls they are a pretty user friendly group. They are bulls that will moderate some birth weight, add muscle, excellent structure, easy keeping, with nice performance, oh and as an added bonus have beautiful dispositions. "Marino" is no exception to this rule. His dam is an outstanding young female, backed by a superior cow family. He is a bull that will produce the big heavy weight steers, top notch replacement females, and last a life time.



| | |
|------------|----------|
| BW | 102 lbs |
| Sept 1 Wt. | 935 lbs |
| Adj. WW | 820 lbs |
| Dec 15 Wt. | 1290 lbs |
| Adj. YW | 1361 lbs |
| WPDA | 3.76 lbs |

41

ANCHOR D CONCORDE 646M

ZDS 646M CA-1472745 07-Jan-24 Full Fleckvieh

VIRGINIA MARQUEE 423D
VIRGINIA BOWMAN 100H
 IPU MS. ROWEENA 100X

ANCHOR D ENTOURAGE 235X
ANCHOR D GINGER 646G
 VIRGINIA MARGARITA 427B

VIRGINIA RADISON 5Z
 VIRGINIA BRANDY 423B
 CHAMPS ROMANO
 AWL HELGA 3S
 BAR 5 SA STRIDE 413P
 ANCHOR D TIA 235T
 CHAMPS ROMANO
 BEECH BROS JENESSA 45X

There are always individuals that stick out from the day they are born, and are noticed every day after as well. That is certainly the case with "Concorde" as he has been an absolute stud from the moment he hit the ground. He was a star at the World Tour this summer. He looks good all the time and he knows it too. He struts his stuff, but in a good way as he has the very typical gentle nature of his sire. His dam is an easy cow to pick out with her short frozen ears, not the prettiest cow, but don't let her looks fool you. She would easily rank in the top percentage of the cows for productivity, certainly no stranger to producing front end contenders. This is easily one of my personal favorite bulls in this year's sale, and when you see him in person I'm certain you will agree.



| | |
|------------|----------|
| BW | 106 lbs |
| Sept 1 Wt. | 760 lbs |
| Adj. WW | 696 lbs |
| Dec 15 Wt. | 1055 lbs |
| Adj. YW | 1146 lbs |
| WPDA | 3.13 lbs |

42

ANCHOR D MOSH PIT 84M

ZDS 84M CA-1472881 13-Jan-24 Full Fleckvieh

VIRGINIA MARQUEE 423D
VIRGINIA BOWMAN 100H
 IPU MS. ROWEENA 100X

BLACK GOLD EPIC 14Z
ANCHOR D GRACELYN 84G
 ANCHOR D DALE 311D

VIRGINIA RADISON 5Z
 VIRGINIA BRANDY 423B
 CHAMPS ROMANO
 AWL HELGA 3S
 ALLM COLOSSAL 25U
 CROSSROAD WHISPER 930W
 BLACK GOLD MOOMBA 22B
 ANCHOR D OLIVIA 320Z

"Mosh Pit" has a power packed pedigree. We all have those cows and cow families that just get it done no matter what. "Olivia 320Z" was one of those cows going back to the great "Image 21J" cow family. You will only see the "Moomba" bull pop up a couple times in pedigrees throughout the catalogue. We unfortunately lost this bull far too young as his handful of daughters and granddaughters we have producing are exceptional. If you see him in a pedigree take notes, a high probability they will be a bull you will score very high sale day.



| | |
|------------|----------|
| BW | 102 lbs |
| Sept 1 Wt. | 745 lbs |
| Adj. WW | 692 lbs |
| Dec 15 Wt. | 1135 lbs |
| Adj. YW | 1286 lbs |
| WPDA | 3.41 lbs |

43

ANCHOR D ADR CATALIST 777M

ADR 777M CA-1473215 17-Jan-24 Full Fleckvieh

VIRGINIA MARQUEE 423D
VIRGINIA BOWMAN 100H
 IPU MS. ROWEENA 100X

KING OF JUNGLE DA ZURITA
ANCHOR D GARREN'S JUNGLE JANE
 ANCHOR D TYRA 20T

VIRGINIA RADISON 5Z
 VIRGINIA BRANDY 423B
 CHAMPS ROMANO
 AWL HELGA 3S
 BHR HAXOLD 690P
 BHBJ JOECELYNN N075E
 SOUTH SEVEN RAZZMATAZZ 7R
 ANCHOR D NUTMEG 3N

I must admit this is a bull I have over looked in the pen. I never truly appreciated him until we started picturing and then wow, where was he hiding. Sometimes in a pen this size it's easy enough to get lost in the shuffle, now that I've found him, he's a bull I notice every day. Super thick made, wide topped, and the loveable "Bowman" disposition. I guess he has no choice but to be gentle though as he comes from the "Tyra" cow family as well. Our program is centered on cow families so I feel confident telling people to keep the females reap the rewards on the big high performance steers. When sorting this guy's replacement females dig in even deeper they will be exceptional.



| | |
|------------|----------|
| BW | 86 lbs |
| Sept 1 Wt. | 710 lbs |
| Adj. WW | 635 lbs |
| Dec 15 Wt. | 1095 lbs |
| Adj. YW | 1222 lbs |
| WPDA | 3.16 lbs |

44 ANCHOR D KNOXVILLE 658M

ZDS 658M CA-1472713 04-Jan-24 Twin Full Fleckvieh

STARWEST BRYCK
BLACK GOLD FORT KNOX 12F
 MS BGS FLORA 81Z

ANCHOR D SORCERER 8B
ANCHOR D GENEVA 658G
 ROCKING R ZEVA

DOUBLE BAR D SPITFIRE 20X
 BAR 5 SA ESMIRALDA 412W
 HEMR WARRIOR 4W
 MFI FLORA 6144
 ANCHOR D IMAX 250Y
 ANCHOR D BARCELONA 8Y
 ROCKING R POL METRO
 ROCKING R MS UREGIS

"Knoxville" is the first of this years "Fort Knox" sire group. He comes from a very nice young cow loaded with calving ease in her pedigree. He is a twin to a bull so typically birth weight is a bit distorted, however I feel this will be a very typical birth weight you should see from this cross as a single birth. "Fort Knox" has done an outstanding job for us over the years. He calves well, but offers lots of growth, added length, lots of muscle, tremendous feet, extra pigmentation and we are very pleased with his daughters now in production. "Knoxville" will be a very user friendly bull that should work in anyone's herd quite confidently.



| | |
|------------|----------|
| BW | 106 lbs |
| Sept 1 Wt. | 830 lbs |
| Adj. WW | 731 lbs |
| Dec 15 Wt. | 1105 lbs |
| Adj. YW | 1150 lbs |
| WPDA | 3.23 lbs |

45 ANCHOR D ELIAS 586M

ZDS 586M CA-1472752 08-Jan-24 Full Fleckvieh

STARWEST BRYCK
BLACK GOLD FORT KNOX 12F
 MS BGS FLORA 81Z

ANCHOR D ENTOURAGE 235X
ANCHOR D ELLA 586E
 NORWOOD UNSTOPPABLE FF 16

DOUBLE BAR D SPITFIRE 20X
 BAR 5 SA ESMIRALDA 412W
 HEMR WARRIOR 4W
 MFI FLORA 6144
 BAR 5 SA STRIDE 413P
 ANCHOR D TIA 235T
 DOUBLE BAR D WHISTLER 168
 NORWOOD RACHEL FF 9R

A super stout made, heavy muscled bull here. "Elias" is a bull who comes from a very powerful super productive cow. He probably reminds me as much as his sire as any of his sons ever. Same muscle shape and structure, and the fact that he is also marked basically identical to his sire as well. This is a bull I would look towards to add extra pounds, length and muscle shape and will also be a bull that adds extra depth of heel and foot structure into his offspring. I think he is a bull that will cross well on any type of cow but I really think this bull will just add that much more value to a set of British based cows. I'm a big fan of "Elias".



| | |
|------------|----------|
| BW | 109 lbs |
| Sept 1 Wt. | 800 lbs |
| Adj. WW | 710 lbs |
| Dec 15 Wt. | 1180 lbs |
| Adj. YW | 1289 lbs |
| WPDA | 3.46 lbs |

46 ANCHOR D ADR HIBACHI 224M

ADR 224M CA-1472756 09-Jan-24 Full Fleckvieh

STARWEST BRYCK
BLACK GOLD FORT KNOX 12F
 MS BGS FLORA 81Z

FGAF BARBOSSA 707X
ANCHOR D GARREN'S TEQUILA 224G
 GARREN'S TARA 21X

DOUBLE BAR D SPITFIRE 20X
 BAR 5 SA ESMIRALDA 412W
 HEMR WARRIOR 4W
 MFI FLORA 6144
 PROSTOCK HUGO 7052T
 FGAF BARBARELLA 839L
 BAR 5 SA STRIDE 413P
 ANCHOR D TYRA 20T

A very likeable bull in the pen. "Hibachi" is a bull I feel that will work on any type of cow. British or Exotics, Red, Black, White or Tan, he is a bull that I think will stamp them. "Fort Knox" has been an awesome producer for us over the years, but hasn't had the opportunity to work on many "Barbossa" females. This looks to me like a money cross, something we need to do more of as this bull is as close to fault free as you will find.



| | |
|------------|----------|
| BW | 95 lbs |
| Sept 1 Wt. | 780 lbs |
| Adj. WW | 696 lbs |
| Dec 15 Wt. | 1175 lbs |
| Adj. YW | 1298 lbs |
| WPDA | 3.47 lbs |

47 ANCHOR D MACS MARVEL 139M

MACS 139M CA-1472775 11-Jan-24 Full Fleckvieh

STARWEST BRYCK
BLACK GOLD FORT KNOX 12F
 MS BGS FLORA 81Z

ANCHOR D MR GIBBS 20Z
ANCHOR D MACS GABI 139G
 MACKENZIE'S KISSES 368Z

DOUBLE BAR D SPITFIRE 20X
 BAR 5 SA ESMIRALDA 412W
 HEMR WARRIOR 4W
 MFI FLORA 6144
 BAR 5 SA STRIDE 413P
 ANCHOR D TYRA 20T
 FGAF BARBOSSA 707X
 ANCHOR D CANDY 122W

Mackenzie was doing a breakdown on her cows this fall, and it was quite interesting, as this cow family has been one of her longest running most consistent cow families. They are a solid group with super udders, feet and legs, disposition, easy keeping, and longevity. A cow family that just quietly goes about their job and pay the bills. "Marvel" will be a bull that will add those same great characteristics into your herd. A very user friendly bull that will keep you on point. His steers will be good his daughters will be epic! This is a great bull to use as a base to start a foundation.



| | |
|------------|----------|
| BW | 96 lbs |
| Sept 1 Wt. | 830 lbs |
| Adj. WW | 774 lbs |
| Dec 15 Wt. | 1070 lbs |
| Adj. YW | 1140 lbs |
| WPDA | 3.17 lbs |

48 ANCHOR D ADR FRAZIER 721M

ADR 721M CA-1472787 12-Jan-24 Full Fleckvieh

STARWEST BRYCK
BLACK GOLD FORT KNOX 12F
 MS BGS FLORA 81Z

BAR 5 SA EVAN 440L
ANCHOR D GARREN'S JESSICA 721J
 CEN MISS PERFECT 512P

DOUBLE BAR D SPITFIRE 20X
 BAR 5 SA ESMIRALDA 412W
 HEMR WARRIOR 4W
 MFI FLORA 6144
 SALERIKA EVAN
 AI-AI SISKA
 SMITHBILT LEVI 501L
 CEN MIA 547M

A few years ago my pick of the females at the Ferme Gagnon sale were full sisters to the dam of "Frazier". I wasn't able to purchase a female for ourselves however there were embryos available so I bought them for Garren. Glad we did as this is a very nice highly productive young cow. She is just at the beginning of her career, as "Frazier" is just her second calf, but I think she has big things in store for the future. This is a bull that will add lots of pigmentation, keep birth weight in check, and still supply more than enough performance. He may be a bit of a sleeper sale day, but will easily be found when ready to turn out in the spring. Solid as a rock.



| | |
|------------|----------|
| BW | 94 lbs |
| Sept 1 Wt. | 670 lbs |
| Adj. WW | 645 lbs |
| Dec 15 Wt. | 1020 lbs |
| Adj. YW | 1178 lbs |
| WPDA | 3.06 lbs |

49 ANCHOR D MONTEGO 189M

ZDS 189M CA-1473243 17-Jan-24 Full Fleckvieh

STARWEST BRYCK
BLACK GOLD FORT KNOX 12F
 MS BGS FLORA 81Z

LFE FS LEWIS 547E
MAD 185J
 MI MS ELECTRA 194E

DOUBLE BAR D SPITFIRE 20X
 BAR 5 SA ESMIRALDA 412W
 HEMR WARRIOR 4W
 MFI FLORA 6144
 FGAF SELDOM 835L
 DOUBLE BAR D 229Z
 VIRGINIA ESPOSITO 69C
 MI MISS BENTLEY 94B

"Montego" is a bull with a totally different pedigree for us. He is a bull that will have added calving ease, through "Seldom & Imax" on the bottom side of his lineage, but still have more than enough punch and growth. He is a bull that won't break the piggy bank, and work for anyone. For dollars invested I feel this will be a tremendous buy and opportunity.



| | |
|------------|----------|
| BW | 114 lbs |
| Sept 1 Wt. | 730 lbs |
| Adj. WW | 680 lbs |
| Dec 15 Wt. | 1210 lbs |
| Adj. YW | 1411 lbs |
| WPDA | 3.69 lbs |

50

ANCHOR D MARLO 535M

ZDS 535M CA-1473456 22-Jan-24 Full Fleckvieh

STARWEST BRYCK
BLACK GOLD FORT KNOX 12F
 MS BGS FLORA 81Z

ANCHOR D MR GIBBS 20Z
ANCHOR D FABIANA 535F
 MISS PARKHILL DIVI 46Z

DOUBLE BAR D SPITFIRE 20X
 BAR 5 SA ESMIRALDA 412W
 HEMR WARRIOR 4W
 MFI FLORA 6144
 BAR 5 SA STRIDE 413P
 ANCHOR D TYRA 20T
 DIVIDEND 87Z
 MISS PARKHILL SUZETTE 66E

"Marlo" has come on like a house on fire. One of the top performance bulls in the pen, and for good reason, his dam, a "Mr. Gibbs" daughter, has no end of performance. She is a very plain colored cow, and I would stand her near the front end of the pen, this cow is just damn good. She has progeny working for Hillcrest Simmentals, SK, Nolara Farms, AB & 7F Ranch, BC, as well as for ourselves. She honestly is a cow we can breed to any bull and know she is going to hit it out of the park. If you want to raise those big powerhouse steers that top the market, this is a bull that will produce them, zero doubt in my mind.



| | |
|------------|----------|
| BW | 112 lbs |
| Sept 1 Wt. | 915 lbs |
| Adj. WW | 864 lbs |
| Dec 15 Wt. | 1210 lbs |
| Adj. YW | 1314 lbs |
| WPDA | 3.73 lbs |

51

ANCHOR D ADR EL COWBOY 428M

ADR 428M CA-1473504 26-Jan-24 Full Fleckvieh

STARWEST BRYCK
BLACK GOLD FORT KNOX 12F
 MS BGS FLORA 81Z

ANCHOR D RAPTOR 392C
ANCHOR D GARREN'S ANNA MARIA
 ANCHOR D TYRA 20T

DOUBLE BAR D SPITFIRE 20X
 BAR 5 SA ESMIRALDA 412W
 HEMR WARRIOR 4W
 MFI FLORA 6144
 VIRGINIA MAXIMUS
 ANCHOR D ZILEY 392Z
 SOUTH SEVEN RAZZMATAZZ 7R
 ANCHOR D NUTMEG 3N

"El Cowboy" is an awesome bull coming from an equally awesome cow family. His dam is a picture perfect "Raptor" daughter, and a direct daughter of "Tyra". If you tour the herd this is no doubt a female that will grab your attention. She is powerful and is a cow you would label as front pasture female. I'm sure Garren is really hoping she gives him a heifer soon as her only female to date was her first calf who sold to Javier Jauregui in Mexico. She also has sons working for Sagwich Land & Livestock, Oregon, Ten Bar Cattle, AB & Ferrybank Colony, AB. This is a bull that will add power, add muscle and make them thick. A top pick in this sire group for sure.



| | |
|------------|----------|
| BW | 101 lbs |
| Sept 1 Wt. | 715 lbs |
| Adj. WW | 698 lbs |
| Dec 15 Wt. | 1000 lbs |
| Adj. YW | 1132 lbs |
| WPDA | 3.16 lbs |

52

ANCHOR D MACGREGOR 626M

ZDS 626M CA-1473533 03-Feb-24 Full Fleckvieh

STARWEST BRYCK
BLACK GOLD FORT KNOX 12F
 MS BGS FLORA 81Z

BLACK GOLD EPIC 14Z
ANCHOR D GARREN'S EVELYN 626E
 GARREN'S CLARABELLE 26A

DOUBLE BAR D SPITFIRE 20X
 BAR 5 SA ESMIRALDA 412W
 HEMR WARRIOR 4W
 MFI FLORA 6144
 ALLM COLOSSAL 25U
 CROSSROAD WHISPER 930W
 VIRGINIA MAXIMUS
 GARREN'S TARA 21X

"Macgregor" is one of the younger bulls in the sale. It's a pretty big ask to get these guys ready for a sale this early as some of young bulls are really just starting to develop into what they are going to become, combined with the fact we are semen testing bulls that are sometimes only 10 or 11 months old. So having said that this is a young bull I feel is really going to develop into something quite special. His full sister who is now a second calver is an absolute standout and produced a \$10,000 bull as a first calver in last year's sale. The pedigree on this guy is impeccable. For dollars invested this will be a fabulous purchase and also keep in mind this is a bull that later in the season may very well cost double. Get your shopping done as I think this will be a tremendous investment.



| | |
|------------|----------|
| BW | 99 lbs |
| Sept 1 Wt. | 780 lbs |
| Adj. WW | 671 lbs |
| Dec 15 Wt. | 1185 lbs |
| Adj. YW | 1289 lbs |
| WPDA | 3.4 lbs |

53 ANCHOR D ADR **KINGSMAN** 523M

ADR 523M CA-1472694 01-Jan-24 **Full Fleckvieh**

VIRGINIA MAXIMUS
ANCHOR D YELLOWSTONE 513J
 LADY SIEGFRIED KEONA

FGAF FRENCH ATTACK 010C
ANCHOR D GARREN'S FLORENTINA
 ANCHOR D ABBY 398B

CHAMPS ROMANO
 VIRGINIA MS REBECCA
 SIEGFRIED
 CRIMSON MISS LADY KEONA
 SIBELLE DIRTY HARRY 25Z
 VIRGINIAS JANE WEST
 ANCHOR D MR GIBBS 20Z
 BLCC MISS PORSCHE 47Y

"Kingsman" is a bull that really intrigues me. His dam has been a super producing cow for Garren, and just so happens to be the grandmother of "Abigail" his \$80,000 heifer that sold this past summer to Double Bar D Farms, at the World Sale. "Yellowstone" is a bull who we are very pleased with. We obtained him via a flush we purchased on an outstanding "Siegfried" daughter from Buzzard Hollow Ranch in Texas, and flushed her to "Maximus" who was our go to bull for many years. All the stars have lined up for this bull, and he could be a very valuable breeding piece for one lucky individual.



| | |
|------------|----------|
| BW | 95 lbs |
| Sept 1 Wt. | 775 lbs |
| Adj. WW | 675 lbs |
| Dec 15 Wt. | 1065 lbs |
| Adj. YW | 1117 lbs |
| WPDA | 3.06 lbs |

54 ANCHOR D **MESTON** 383M

ZDS 383M CA-1472702 02-Jan-24 **Full Fleckvieh**

VIRGINIA MAXIMUS
ANCHOR D YELLOWSTONE 513J
 LADY SIEGFRIED KEONA

FGAF BARBOSSA 707X
ANCHOR D AVIANA 383C
 BAR 5 SA EUPHORIA 805Z

CHAMPS ROMANO
 VIRGINIA MS REBECCA
 SIEGFRIED
 CRIMSON MISS LADY KEONA
 PROSTOCK HUGO 7052T
 FGAF BARBARELLA 839L
 SALERIKA BESSMAN
 TOVERBERG ERIKA

"Meston" comes from one of our super power momma cows. This is one of those cows that you just expect to give you a home run every time. This is a cow who consistently adds a front end contender to the pen. Regardless if you are wanting to raise heavy weight steers, build a pen of bulls or sire a group of outstanding replacement females, this is a bull that will no doubt do it all. I am a huge fan of him both phenotypically and genetically. A bull you certainly need to mark down in your spring's shopping list.



| | |
|------------|----------|
| BW | 66 lbs |
| Sept 1 Wt. | 735 lbs |
| Adj. WW | 665 lbs |
| Dec 15 Wt. | 1050 lbs |
| Adj. YW | 1145 lbs |
| WPDA | 3.03 lbs |

55 ANCHOR D **MORRIS** 4M

ZDS 4M CA-1472710 04-Jan-24 Twin **Full Fleckvieh**

VIRGINIA MAXIMUS
ANCHOR D YELLOWSTONE 513J
 LADY SIEGFRIED KEONA

FGAF FRENCH ATTACK 010C
ANCHOR D GEANETTE 4G
 ANCHOR D SAPHIRE 111S

CHAMPS ROMANO
 VIRGINIA MS REBECCA
 SIEGFRIED
 CRIMSON MISS LADY KEONA
 SIBELLE DIRTY HARRY 25Z
 VIRGINIAS JANE WEST
 SHAWACRES JAHARI 50L
 ANCHOR D HEBE 108K

Yes you will note the tiny birth weight, as "Morris" was a twin. There is more to this bull than what meets the eye. Physically he is very correct and quite good, what you don't get to see is the fact that he was weaned early, as his dam did come up open, and with being tight on grass this summer we pulled culls early, so he started smaller and then was weaned in July. Take all that into consideration and this is a bull with much more performance than you truly realize. A pedigree that also backs that up. Don't look him over this is a very honest bull that will do an outstanding job.



| | |
|------------|----------|
| BW | 102 lbs |
| Sept 1 Wt. | 840 lbs |
| Adj. WW | 735 lbs |
| Dec 15 Wt. | 1195 lbs |
| Adj. YW | 1276 lbs |
| WPDA | 3.47 lbs |

56 ANCHOR D MACALISTER 413M

ZDS 413M CA-1472734 06-Jan-24 Full Fleckvieh

VIRGINIA MAXIMUS
ANCHOR D YELLOWSTONE 513J
 LADY SIEGFRIED KEONA

DOUBLE BAR D INTUITION
ANCHOR D FEODORA 413F
 ANCHOR D BRISA 305B

CHAMPS ROMANO
 VIRGINIA MS REBECCA
 SIEGFRIED
 CRIMSON MISS LADY KEONA
 MFI JEREMIAH 9022
 MFI FRIEDA 3077
 VIRGINIA MAXIMUS
 ANCHOR D PEACH 265U

"Macalister" is a big sexy beast! This dark red incredibly long bodied bull has got it all going. I did catch a little criticism from some members of the team, not mentioning any names, Gary & Garren, for my odd choice of mating as yes there is a little line breeding. Well the old saying is when it's good its line breeding, when it's bad it's inbreeding, just to be clear this is line breeding. Now to expand on this if you want to talk about breeding consistency and uniformity, a little line breeding isn't a bad thing as long as it's within reason. End of the story this is an awesome bull that will contribute great qualities. If I had a set of straight British cows this may very well be my first overall pick. A set of black or red blaze faced calves by this bull would be sale toppers.



| | |
|------------|----------|
| BW | 101 lbs |
| Sept 1 Wt. | 830 lbs |
| Adj. WW | 761 lbs |
| Dec 15 Wt. | 1145 lbs |
| Adj. YW | 1241 lbs |
| WPDA | 3.34 lbs |

57 ANCHOR D MEKAISTO 314M

ZDS 314M CA-1472743 07-Jan-24 Full Fleckvieh

VIRGINIA MAXIMUS
ANCHOR D YELLOWSTONE 513J
 LADY SIEGFRIED KEONA

BLACK GOLD FORT KNOX 12F
ANCHOR D JAZZIE 314J
 ANCHOR D CAMILO 293C

CHAMPS ROMANO
 VIRGINIA MS REBECCA
 SIEGFRIED
 CRIMSON MISS LADY KEONA
 STARWEST BRYCK
 MS BGS FLORA 81Z
 BLACK GOLD EPIC 14Z
 ANCHOR D PRIMROSE 10P

"Mekaisto" has a power packed pedigree. He is a deep sided soft made bull with lots of power behind him. A bull that will raise steer calves the bankers will love. Look at the sheer power of him in such a mellow package, tons of hair and eye appeal. He is loaded with the maternal strengths as well to keep as many daughters as you can. He is as structurally sound as they come. This is a bull that will sire calves that are highly sought after in both sexes, and he will be a bull that covers a pile of cows. I encourage you to watch his video, as this bull moves like a cat. His dam is an incredible young female that will certainly have an impact in our program.



| | |
|------------|----------|
| BW | 93 lbs |
| Sept 1 Wt. | 785 lbs |
| Adj. WW | 741 lbs |
| Dec 15 Wt. | 1060 lbs |
| Adj. YW | 1160 lbs |
| WPDA | 3.15 lbs |

58 ANCHOR D MAGILL 308M

ZDS 308M CA-1473196 14-Jan-24 Full Fleckvieh

VIRGINIA MAXIMUS
ANCHOR D YELLOWSTONE 513J
 LADY SIEGFRIED KEONA

BLACK GOLD FORT KNOX 12F
ANCHOR D JADA 308J
 ANCHOR D ESTRADA 435E

CHAMPS ROMANO
 VIRGINIA MS REBECCA
 SIEGFRIED
 CRIMSON MISS LADY KEONA
 STARWEST BRYCK
 MS BGS FLORA 81Z
 BLACK GOLD MOOMBA 22B
 ANCHOR D ROSALIND 334Z

As many of you know there was a stretch of cold last year during calving season that tested us all. "Magill" just so happened to a baby that was born on one of those very days, while cleaning barn. He was only outside for about 10 minutes, but that's all it took to give him his distinguished look. Now here's a little rancher concept for you, if you want calving ease, buy a bull with short ears, you know the cow had him on her own and probably didn't take long doing it. All joking aside this is an awesome bull that you will no doubt get a short eared discount on, but his calves will all have genetically large ears. A very good bull from a great young cow with a solid pedigree, he's worth the look.



| | |
|------------|----------|
| BW | 95 lbs |
| Sept 1 Wt. | 710 lbs |
| Adj. WW | 703 lbs |
| Dec 15 Wt. | 1040 lbs |
| Adj. YW | 1205 lbs |
| WPDA | 3.29 lbs |

59 ANCHOR D MACS MELBOURNE 675M

MACS 675M CA-1473531 03-Feb-24 Full Fleckvieh

VIRGINIA MAXIMUS
ANCHOR D YELLOWSTONE 513J
 LADY SIEGFRIED KEONA

BLACK GOLD FORT KNOX 12F
ANCHOR D HALLELUJAH 675H
 ANCHOR D DIVA 118D

CHAMPS ROMANO
 VIRGINIA MS REBECCA
 SIEGFRIED
 CRIMSON MISS LADY KEONA
 STARWEST BRYCK
 MS BGS FLORA 81Z
 ANCHOR D ENTOURAGE 235X
 ANCHOR D BARCELONA 8Y

This is the last "Yellowstone" son in this year's catalogue, and a dandy he is. He comes from a really nice young cow Mackenzie purchased from us. As a first calver she raised a very solid set of twin bulls, on her own, and bred back to raise a full sib in last year's sale selling to Dennis & Cherry Flemming. Certainly some fertility there, not to mention a great pedigree, but more importantly as a first calver raising twins, breeding back and then coming back in the condition she is in is very impressive. This is only her third kick at the cat, and "Melbourne" is a bull you have to appreciate his soundness and structural integrity. He is balanced, has a moderate birth weight, nice performance, and is just simply quite good.



| | |
|------------|----------|
| BW | 92 lbs |
| Sept 1 Wt. | 855 lbs |
| Adj. WW | 741 lbs |
| Dec 15 Wt. | 1185 lbs |
| Adj. YW | 1243 lbs |
| WPDA | 3.39 lbs |

60 ANCHOR D LATIGO 369L

ZDS 369L CA-P1472666 31-Dec-23 Polled Full Fleckvieh

STARWEST POL BLUEPRINT
ANCHOR D KINGPIN 503K
 SUNNY VALLEY LADY A 51A

FGAF BARBOSSA 707X
ANCHOR D HAPPY 369H
 STARWEST RAPUNZEL

ANCHOR "T" RUSTY 59G
 PHS HOMOZYGOUS XCEPTIONAL
 ANCHOR D IMAX 250Y
 SUNNY VALLEY HAYLEY 4X
 PROSTOCK HUGO 7052T
 FGAF BARBARELLA 839L
 FGAF GUERRERO 810Y
 JB CDN KANANASKIS 4019

As you already know, we focus hard on cow families. "Latigo" comes from the "Kananaskis" cow family. We do have several that trace back to this line through two herd bull we walked, "Samurai & Windsurfer" but this is the only line coming from the dams' side in "Happy". This is a super productive line that boasts big performance and moderation of birth weight, something we all strive for. Topped off by the bonus of being polled too. This is the first set of "Kingpin" calves for us and we are very pleased with the job he has done.



| | |
|------------|----------|
| BW | 98 lbs |
| Sept 1 Wt. | 820 lbs |
| Adj. WW | 705 lbs |
| Dec 15 Wt. | 1165 lbs |
| Adj. YW | 1231 lbs |
| WPDA | 3.34 lbs |

61 ANCHOR D KINGSWAY 309M

ZDS 309M CA-P1472683 01-Jan-24

Homozygous Polled Full Fleckvieh

STARWEST POL BLUEPRINT
ANCHOR D KINGPIN 503K
 SUNNY VALLEY LADY A 51A

FGAF BARBOSSA 707X
ANCHOR D FLORENTINE 309F
 ANCHOR D DIVA 118D

ANCHOR "T" RUSTY 59G
 PHS HOMOZYGOUS XCEPTIONAL
 ANCHOR D IMAX 250Y
 SUNNY VALLEY HAYLEY 4X
 PROSTOCK HUGO 7052T
 FGAF BARBARELLA 839L
 ANCHOR D ENTOURAGE 235X
 ANCHOR D BARCELONA 8Y

"Kingsway" is a bull with huge potential. First is the pedigree, he is loaded from top to bottom with big names and productive lines. Second is within his pedigree the diversity he offers through calving ease with the likes of "Blueprint, Imax, Barbossa & Molson". Heritage, obviously the list of bulls already mentioned, as well as big time performance bulls like "Rusty & Entourage" not to mention the "Barcelona" cow who only ever had 3 bull calves all of which found their way into Purebred herds, "Sorcerer" (Rocking R & Anchor D), "Apex" (Stone Simmentals), "Kershaw" (Haddie Simmentals). All of this and then topped off with the fact he also tested HOMOZYGOUS Polled. Unlimited potential, I think so.



| | |
|------------|----------|
| BW | 76 lbs |
| Sept 1 Wt. | 750 lbs |
| Adj. WW | 695 lbs |
| Dec 15 Wt. | 980 lbs |
| Adj. YW | 1045 lbs |
| WPDA | 2.87 lbs |

62

ANCHOR D MASCOT 601M

ZDS 601M CA-1472755 09-Jan-24 **Full Fleckvieh**

STARWEST POL BLUEPRINT
ANCHOR D KINGPIN 503K
SUNNY VALLEY LADY A 51A

FGAF FRENCH ATTACK 010C
ANCHOR D JULEP 601J
ANCHOR D EMBER 222C

ANCHOR "T" RUSTY 59G
PHS HOMOZYGOUS XCEPTIONAL
ANCHOR D IMAX 250Y
SUNNY VALLEY HAYLEY 4X
SIBELLE DIRTY HARRY 25Z
VIRGINIAS JANE WEST
VIRGINIA MAXIMUS
ANCHOR D CANDY 122W

There are always factors that come into play that can't be seen on the surface. "Mascot" is no doubt a bit more calving ease oriented and certainly not the big power bull of the pen. The one thing that can't be seen is the fact that he was injured prior to weigh day as he had both a hurt front foot and hind leg, so he certainly wasn't close to where he should have been weigh day, but it is what it is. End story like I said a bull that will certainly offer extra calving ease, but also a bull that offers more performance than what the story tells. We are very pleased with the job "Kingpin" did for us and due to his calving ease he will slide across into a heifer pen this year. This is the angle I would approach with this bull, and just remember everyone should have a "Mascot".



| | |
|------------|----------|
| BW | 108 lbs |
| Sept 1 Wt. | 815 lbs |
| Adj. WW | 737 lbs |
| Dec 15 Wt. | 1180 lbs |
| Adj. YW | 1294 lbs |
| WPDA | 3.47 lbs |

63

ANCHOR D KING CHARLES 157M

ZDS 157M CA-P1472769 10-Jan-24 **Polled Full Fleckvieh**

STARWEST POL BLUEPRINT
ANCHOR D KINGPIN 503K
SUNNY VALLEY LADY A 51A

FGAF BARBOSSA 707X
ANCHOR D HERMIA 157H
ROCKING R CARLEY 20C

ANCHOR "T" RUSTY 59G
PHS HOMOZYGOUS XCEPTIONAL
ANCHOR D IMAX 250Y
SUNNY VALLEY HAYLEY 4X
PROSTOCK HUGO 7052T
FGAF BARBARELLA 839L
ROCKING R Z-MAN
ROCKING R ZEVA

A little added power in "King Charles" from this sire group. His dam is a big powerful "Barbossa" daughter that has more power and performance coming from the dams' side of the pedigree. The 20C cow was a female we obtained when we purchased the Rocking R herd. This is a cow that had no end of power, even though her pedigree indicated more along the lines of calving ease, she was a powerhouse. "King Charles" is a bull that will produce an outstanding group of high performance feedlot steers. If you are wanting to add the pounds and remove horns but not want to sacrifice performance in the process, I would highly recommend this bull.



| | |
|------------|----------|
| BW | 113 lbs |
| Sept 1 Wt. | 790 lbs |
| Adj. WW | 738 lbs |
| Dec 15 Wt. | 1120 lbs |
| Adj. YW | 1240 lbs |
| WPDA | 3.3 lbs |

64

ANCHOR D KING JULIAN 351M

ZDS 351M CA-P1472780 11-Jan-24 **Polled Full Fleckvieh**

STARWEST POL BLUEPRINT
ANCHOR D KINGPIN 503K
SUNNY VALLEY LADY A 51A

BLACK GOLD FORT KNOX 12F
ANCHOR D JULIE 351J
ANCHOR D FLOREENA 194F

ANCHOR "T" RUSTY 59G
PHS HOMOZYGOUS XCEPTIONAL
ANCHOR D IMAX 250Y
SUNNY VALLEY HAYLEY 4X
STARWEST BRYCK
MS BGS FLORA 81Z
DOUBLE BAR D INTUITION
ANCHOR D ALLEGRA 331C

"King Julian" is a bull who we probably tend to overlook a bit in the pen. He is a super smooth made, long bodied bull, that will certainly add performance. His dam's side of the pedigree has been tremendous producers for us. This is a cow family that traces back to a very solid producing cow we imported from Texas as a calf, and managed to keep in production into her early teens. A bull who won't break the bank but I certainly encourage you to look at. A bull that is plain useful and will add value to any calf crop.



| | |
|------------|----------|
| BW | 110 lbs |
| Sept 1 Wt. | 725 lbs |
| Adj. WW | 702 lbs |
| Dec 15 Wt. | 1065 lbs |
| Adj. YW | 1220 lbs |
| WPDA | 3.23 lbs |

65

ANCHOR D MAGNUM 251M

ZDS 251M CA-1473263 20-Jan-24 Full Fleckvieh

STARWEST POL BLUEPRINT
ANCHOR D KINGPIN 503K
 SUNNY VALLEY LADY A 51A

BLACK GOLD EPIC 14Z
ANCHOR D J-LO 251J
 ANCHOR D EVETTE 560E

ANCHOR "T" RUSTY 59G
 PHS HOMOZYGOUS XCEPTIONAL
 ANCHOR D IMAX 250Y
 SUNNY VALLEY HAYLEY 4X
 ALLM COLOSSAL 25U
 CROSSROAD WHISPER 930W
 FGAF WINDSURFER 820Y
 ANCHOR D ZULAGON 277U

"Magnum" is a family favorite. Now if you were to ask anyone here about "Magnum" they may pull a blank but if you ask about "Pooh Bear" they will know who you are talking about. He was born a pet, as is his dam. Same story if you ask about "J-Lo" no one will have a clue who you are talking about, however "Pestasaurus" that's a whole new topic. This is a productive cow family, added growth, and well disposition is absolutely built in, they love attention. Looking to create some top end cows, "Magnum" is a good pick, and his steers will also be stellar.



| | |
|------------|----------|
| BW | 94 lbs |
| Sept 1 Wt. | 740 lbs |
| Adj. WW | 704 lbs |
| Dec 15 Wt. | 1145 lbs |
| Adj. YW | 1322 lbs |
| WPDA | 3.51 lbs |

66

ANCHOR D MACSEN 372M

ZDS 372M CA-1473488 24-Jan-24 Full Fleckvieh

STARWEST POL BLUEPRINT
ANCHOR D KINGPIN 503K
 SUNNY VALLEY LADY A 51A

ANCHOR D MR GIBBS 20Z
ANCHOR D HERMILA 372H
 ANCHOR D HERLINDA 144A

ANCHOR "T" RUSTY 59G
 PHS HOMOZYGOUS XCEPTIONAL
 ANCHOR D IMAX 250Y
 SUNNY VALLEY HAYLEY 4X
 BAR 5 SA STRIDE 413P
 ANCHOR D TYRA 20T
 VIRGINIA MAXIMUS
 ANCHOR D HERLINDE 154X

One of the cow families that really helped kick start our program was "Herlinde". This is a cow family that offered great growth, calving ease, and moderated birth weight, and the maternal strengths were unmatched. "Macsen" is a descendent from this great cow family, and he offers everything I just mentioned. A bull that has great growth, moderate birth, smooth made and very eye appealing. I keep talking about the strengths of cow families, and without good cows it's pretty tough to raise a good calf. This is a bull that will build a foundation line, but not give up any performance. A true stud.



| | |
|------------|----------|
| BW | 107 lbs |
| Sept 1 Wt. | 870 lbs |
| Adj. WW | 749 lbs |
| Dec 15 Wt. | 1235 lbs |
| Adj. YW | 1306 lbs |
| WPDA | 3.54 lbs |

67

ANCHOR D MILLANO 444M

ZDS 444M CA-1472679 01-Jan-24 Full Fleckvieh

VIRGINIA RADISON 5Z
VIRGINIA PRECISION 16C
 BROCK YODA

CASEYS MAJESTY 1Y
ANCHOR D GODIVA 444G
 ANCHOR D SAPHIRE 111S

CROSSROAD RADIUM 789U
 SS LEGACY 5U FF
 ANCHOR "T" METRO 4E
 BRK PLAY MATE
 KNIGHT MAJESTY 247S
 CHERRY'S HEIDI
 SHAWACRES JAHARI 50L
 ANCHOR D HEBE 108K

"Millano" is a high horse power bull. I absolutely adore his dam. The "Casey's Majesty" cows we have had over the years have all been big growthy, high performance individuals, with the greatest temperaments, truly gentle giants. She comes from our embryo program, being a daughter of "Saphire" so needless to say the pedigree is stacked from top to bottom. "Millano" will be a bull that supplies huge growth, ease of fleshing, disposition, structural soundness and color. If you want to add pigmentation this guy will do a better job than any paint brush. His daughters will be plumb good but man his steer calves will be flat out good. My personal pick of the "Precision" sire group.



| | |
|------------|----------|
| BW | 89 lbs |
| Sept 1 Wt. | 730 lbs |
| Adj. WW | 731 lbs |
| Dec 15 Wt. | 1105 lbs |
| Adj. YW | 1302 lbs |
| WPDA | 3.56 lbs |

68 ANCHOR D MACS MUFASA 130M

MACS 130M CA-1473546 09-Feb-24 Full Fleckvieh

VIRGINIA RADISON 5Z
VIRGINIA PRECISION 16C
 BROCK YODA

BLACK GOLD MOOMBA 22B
ANCHOR D MACS DANICA 130D
 ANCHOR D KATE 153Y

CROSSROAD RADIUM 789U
 SS LEGACY 5U FF
 ANCHOR "T" METRO 4E
 BRK PLAY MATE
 SOUTHSEVEN MR ADONIS 96Z
 SALMON ARM ALPEN 2ND
 SOUTH SEVEN RAZZMATAZZ 7R
 ANCHOR D CHER 100S

When putting together the catalogue, I always try to do our sire groups and then list them from oldest to youngest. I struggled this year laying it out and I needed to get info sent to Kathy (who is the best I might add) so numbers got shifted and I just went with it. So having said that please note the birth date on "Mufasa" as he is one of the youngest "Precision" sons. "Precision" did a masterful job for us over the years, and is a bull we will still utilize in the heifer pen through AI. The best part is he is so much more than a calving ease bull as he offers performance as well. "Mufasa" will do the same.



| | |
|------------|----------|
| BW | 86 lbs |
| Sept 1 Wt. | 685 lbs |
| Adj. WW | 639 lbs |
| Dec 15 Wt. | 1060 lbs |
| Adj. YW | 1210 lbs |
| WPDA | 3.11 lbs |

69 ANCHOR D MELTON 481M

ZDS 481M CA-1472761 09-Jan-24 Full Fleckvieh

VIRGINIA RADISON 5Z
VIRGINIA PRECISION 16C
 BROCK YODA

FGAF FRENCH ATTACK 010C
ANCHOR D JENAY 481J
 ANCHOR D DENAY 465D

CROSSROAD RADIUM 789U
 SS LEGACY 5U FF
 ANCHOR "T" METRO 4E
 BRK PLAY MATE
 SIBELLE DIRTY HARRY 25Z
 VIRGINIAS JANE WEST
 FGAF BARBOSSA 707X
 ANCHOR D ABBA 50A

This is a bull I would score as heifer friendly. As I mentioned earlier "Precision" has been a go to bull for us on the calving side for many years. He is going to be 10 years old this spring and is still going strong at Diamond Rio Ranch. He has left us many, many daughters over the years, and has always given us good growth combined with the calving ease. "Melton" is a bull I am quite high on. I think similar to his sire in being able to offer calving ease, growth, maternal and longevity. The bottom of his pedigree only adds value and solidifies what I just mentioned with "Barbossa & Legend" back to back. He will work for anyone but I may suggest breeders have a close look. Heifer bulls are always the toughest to find. This is a legit contender.



| | |
|------------|----------|
| BW | 83 lbs |
| Sept 1 Wt. | 720 lbs |
| Adj. WW | 704 lbs |
| Dec 15 Wt. | 1075 lbs |
| Adj. YW | 1245 lbs |
| WPDA | 3.15 lbs |

70 ANCHOR D MAXWELL 282M

ZDS 282M CA-1472767 09-Jan-24 Full Fleckvieh

VIRGINIA RADISON 5Z
VIRGINIA PRECISION 16C
 BROCK YODA

FGAF BARBOSSA 707X
ANCHOR D KALLIE 282K
 ANCHOR D GWEN 100G

CROSSROAD RADIUM 789U
 SS LEGACY 5U FF
 ANCHOR "T" METRO 4E
 BRK PLAY MATE
 PROSTOCK HUGO 7052T
 FGAF BARBARELLA 839L
 BLACK GOLD EPIC 14Z
 ANCHOR D CHERICE 223A

Another calving ease candidate in "Maxwell". A similar story to our last bull as there is calving ease on both the top and bottom sides of this pedigree, but also look at the performance that still comes with this package. Great cow family, tracing back to "Cher" which happens to be one of the largest cow families on the farm. "Maxwell" isn't going to blow your socks off, and I have always stated, finding the right heifer bull is one of the hardest tasks as we all gravitate to the big power bulls in the pen. Appreciate this guy for what he is you will love him. "Maxwell" is a smart choice.



| | |
|------------|----------|
| BW | 85 lbs |
| Sept 1 Wt. | 680 lbs |
| Adj. WW | 674 lbs |
| Dec 15 Wt. | 1035 lbs |
| Adj. YW | 1215 lbs |
| WPDA | 3.05 lbs |

71

ANCHOR D MARKSMAN 652M

ZDS 652M CA-1472777 11-Jan-24 **Full Fleckvieh**

VIRGINIA RADISON 5Z
VIRGINIA PRECISION 16C
 BROCK YODA

FGAF FRENCH ATTACK 010C
ANCHOR D KEELIE 652K
 ANCHOR D NINA 79B

CROSSROAD RADIUM 789U
 SS LEGACY 5U FF
 ANCHOR "T" METRO 4E
 BRK PLAY MATE
 SIBELLE DIRTY HARRY 25Z
 VIRGINIAS JANE WEST
 FGAF BARBOSSA 707X
 ANCHOR D GENIA 44Z

Another solid calving ease candidate, with the "Precision - Barbossa" combination showing again. Predictable genetics, and two of the most bomb proof heifer bulls we have used over the years. "Marksman" is a bull I grow to appreciate that much more every day. As you know with our sale being this early these calves are really just starting to showcase who they really are. Combined with the fact that "Marksman" is from a first calver, he is fighting out of his weight range in a pen of 165 bulls. Here we are late December when we are wrapping up the catalogue and this bull has really begun to make a big move. I think sale day he will be just that much better, and when he gets dropped off at his new home in the spring he will blow you away.



| | |
|------------|----------|
| BW | 89 lbs |
| Sept 1 Wt. | 675 lbs |
| Adj. WW | 674 lbs |
| Dec 15 Wt. | 975 lbs |
| Adj. YW | 1132 lbs |
| WPDA | 2.88 lbs |

72

ANCHOR D MASSIE 695M

ZDS 695M CA-P1472788 12-Jan-24 **Polled Full Fleckvieh**

VIRGINIA RADISON 5Z
VIRGINIA PRECISION 16C
 BROCK YODA

FGAF FRENCH ATTACK 010C
ANCHOR D KELSIE 695K
 ANCHOR D DACEY 187D

CROSSROAD RADIUM 789U
 SS LEGACY 5U FF
 ANCHOR "T" METRO 4E
 BRK PLAY MATE
 SIBELLE DIRTY HARRY 25Z
 VIRGINIAS JANE WEST
 FGAF BARBOSSA 707X
 ANCHOR D GRACEN 192C

I'm sure as you can see with the previous 3 bulls there is a pattern, "Precision" back to a "Barbossa" base. Obviously when sorting bulls to make the cut we have a target of how many performance, how many calving ease, Fullblood, Purebred, Charolais. So when you break down the big picture and see this many calving ease bulls with such a similar cross it tells you a couple things. Consistency not just in birth weight, but also type, and marketability. These are all bulls coming from proven sires, and when I say proven I truly mean just that as "Precision" is still working at 10 years old, and "Barbossa" was until age 11. Proof in the pudding.



| | |
|------------|----------|
| BW | 88 lbs |
| Sept 1 Wt. | 620 lbs |
| Adj. WW | 634 lbs |
| Dec 15 Wt. | 1005 lbs |
| Adj. YW | 1221 lbs |
| WPDA | 3.02 lbs |

73

ANCHOR D MARIACHI 423M

ZDS 423M CA-1473228 17-Jan-24 **Full Fleckvieh**

VIRGINIA RADISON 5Z
VIRGINIA PRECISION 16C
 BROCK YODA

FGAF BARBOSSA 707X
ANCHOR D ADR KIMBER 423K
 ANCHOR D GARREN'S JUNGLE JANE

CROSSROAD RADIUM 789U
 SS LEGACY 5U FF
 ANCHOR "T" METRO 4E
 BRK PLAY MATE
 PROSTOCK HUGO 7052T
 FGAF BARBARELLA 839L
 KING OF JUNGLE DA ZURITA
 ANCHOR D TYRA 20T

I guess I could have held the last footnotes for this guy, as here is number 5 with the same story. Note the consistency in birth weight and performance for the most part on these guys. You want to make a pen of calves look the same, and perform the same the proof is here. Anyone running multiple heifer bulls, load up on this set. "Mariachi" is backed by the great "Tyra" cow family, and although we have focused on the calving ease aspect, don't discount the maternal values here. "Mariachi" is as good as they come.



| | |
|------------|----------|
| BW | 88 lbs |
| Sept 1 Wt. | 720 lbs |
| Adj. WW | 730 lbs |
| Dec 15 Wt. | 1050 lbs |
| Adj. YW | 1232 lbs |
| WPDA | 3.17 lbs |

74

ANCHOR D MONTARO 145M

ZDS 145M CA-1473259 19-Jan-24 Full Fleckvieh

VIRGINIA RADISON 5Z
VIRGINIA PRECISION 16C
 BROCK YODA

FGAF FRENCH ATTACK 010C
ANCHOR D JAMBOREE 145J
 ANCHOR D EMBER 222C

CROSSROAD RADIUM 789U
 SS LEGACY 5U FF
 ANCHOR "T" METRO 4E
 BRK PLAY MATE
 SIBELLE DIRTY HARRY 25Z
 VIRGINIAS JANE WEST
 VIRGINIA MAXIMUS
 ANCHOR D CANDY 122W

Those first calving heifers, let them have an easy birth, problem free and get them bred back, that's the future of your cow herd. So at the time of writing these footnotes ironically "145J" just calved. So not only did she have a good go as a first calver, she also bred back calved close to a month earlier. That's the value of the right choice of heifer bulls, but further to that I'm the first to admit I'm greedy. I don't just want a cow freshener, I want a calf to show for it in the end. Once again have a serious look at these "Precision" calves they are as legit as they come.



| | |
|------------|----------|
| BW | 92 lbs |
| Sept 1 Wt. | 705 lbs |
| Adj. WW | 721 lbs |
| Dec 15 Wt. | 1035 lbs |
| Adj. YW | 1223 lbs |
| WPDA | 3.28 lbs |

75

ANCHOR D MATLOCK 598M

ZDS 598M CA-1473534 03-Feb-24 Full Fleckvieh

VIRGINIA RADISON 5Z
VIRGINIA PRECISION 16C
 BROCK YODA

BLACK GOLD EPIC 14Z
ANCHOR D JOY 598J
 DONOVANDALE FAITH

CROSSROAD RADIUM 789U
 SS LEGACY 5U FF
 ANCHOR "T" METRO 4E
 BRK PLAY MATE
 ALLM COLOSSAL 25U
 CROSSROAD WHISPER 930W
 SIBELLE DIRTY HARRY 25Z
 DONOVANDALE CALEIGH

"Matlock" is another bull that has really been catching my attention as of late. This is a really well balanced bull with ample growth carrying the calving ease flag. His grandmother was a former high seller from the Eastern Harvest Sale, and a female we really like a lot. This is a bull that has tons of thickness, great hair, growth and calving ease all wrapped up and a very nice pedigree to compliment him. Another calving ease candidate that has all the bells and whistles.



| | |
|------------|----------|
| BW | 82 lbs |
| Sept 1 Wt. | 665 lbs |
| Adj. WW | 714 lbs |
| Dec 15 Wt. | 1010 lbs |
| Adj. YW | 1240 lbs |
| WPDA | 3.19 lbs |

76

ANCHOR D HEF 116M

ZDS 116M CA-P1473527 02-Feb-24
 Homozygous Polled Full Fleckvieh

FGAF RADIOACTIVE 030E
ANCHOR D HEFNER 274H
 ANCHOR D FLORE 274F

NGDB 80F
BOVEY'S POLLED MISS KINGSLEY
 BEL-CHAR POL GENEVIEVE FF 15G

FGAF GUERRERO 810Y
 STARWEST ANGEL
 FGAF BARBOSSA 707X
 ANCHOR D ROSA 477D
 STARWEST POL BLUEPRINT
 SUNNY VALLEY LADY A 51A
 FGAF PASSPORT 125B
 TRYON CHARLOTTE FF4C

"Hef" is another very legitimate calving ease candidate. He comes from a nice young cow we purchased from Bovey Family Farm in Ontario. There is calving ease on both sides of his pedigree, and his dam is a cow we are really excited about to see what she does as we mate her with more power now. As an added bonus "Hef" also tested Homozygous Polled. This bull will be a really nice option for someone wanting to market females regardless of registered or commercially. You will be able to assure the buyers they are going to get a Polled calf with great growth, and they will calve like a dream. The best way to make long term momma cows is breed them right the first time.



77

ANCHOR D CD MERRIK 98M

ZDS 98M CA-1472757 09-Jan-24 **Full Fleckvieh**

SOUTHSEVEN MR ADONIS 96Z
BLACK GOLD ELEVATION 20E
 BLACK GOLD MS FLORA 84B

BLL CREED 950G
ANCHOR D CD KAYLEE 98K
 ANCHOR D KAEL 255C

BLCC MR ADONIS 30X
 SOUTH SEVEN MISS 70S
 BAR 5 FF HEXAGON 412Y
 MFI FLORA 6144
 DOUBLE BAR D CONFIDENCE 179D
 BEE SUZETTE 478B
 FGAF BARBOSSA 707X
 ANCHOR D RUBY RED 198A

Several years ago we purchased some "Elevation" semen looking to use him to add some power. When those first set of calves came we soon realized this is a bull that can add value in the heifer pen. "Merrik" arrives from our very last straw of semen we have from his sire, and he is no doubt a calving ease bull. He will produce calves with a little extra get up and go. Very vigorous at birth, have tons of eye appeal, perfect color, lots of hair, just good solid calves, and backed by a very proven pedigree on both sides. "Merrik" will be as close to bomb proof in the calving pen as you will find.

| | |
|------------|----------|
| BW | 75 lbs |
| Sept 1 Wt. | 680 lbs |
| Adj. WW | 668 lbs |
| Dec 15 Wt. | 995 lbs |
| Adj. YW | 1148 lbs |
| WPDA | 2.92 lbs |

New Fleckvieh Herdsires



Alamo



Michelob



Kobalt



Intrepid

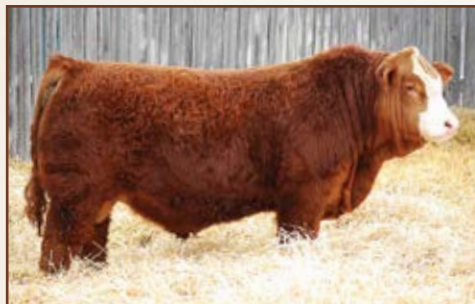
The wait is over. Although our purebred numbers aren't huge we felt we were in position to step up our game. The acquisition of some key breeding females, added to an already proven core, the next step was to find THE BULL. "El Dorado" is the bull we were in search of, and we were fortunate enough to purchase him. He created quite a buzz and we are certain when you see them in person you will understand why. Just over half of our purebred bulls will be sired by him, but the balance of the group is not to be over looked. This is a group of bulls we are certainly very proud of and we hope you can see our vision as to where we are headed. Same focus is a must on maternal strengths, cow families, and structure. We are very proud of this group and we hope you appreciate them.



El Dorado



Whiskey



Top Tier



Heat Wave



Caliber



Hannibal



Captain Morgan



Garren



Mackenzie



2024 Gold Book Award



Dean Edge Reserve Champion Auctioneer 2024



Don & Dan



Rob & Joyce Mullert Mentors



2024 World Simmental Tour at Anchor D Simmentals



| | |
|------------|----------|
| BW | 105 lbs |
| Sept 1 Wt. | 820 lbs |
| Adj. WW | 736 lbs |
| Dec 15 Wt. | 1205 lbs |
| Adj. YW | 1323 lbs |
| WPDA | 3.44 lbs |

78

ANCHOR D EL CAJON 104L

ZDS 104L CA-PG1472677 31-Dec-23
Homozygous Polled Purebred

SVS TYCOON 841F
DEEG EL DORADO 81K
WLB 18D SOFIE 497F

ANCHOR D MATADOR 527E
ANCHOR D JITTER 104J
MISS PARKHILL KATTY

SVS BROOKS 669D
SVS RED ANNIE 411B
SFM STOUGHTON 18D
WLB 52Z TARA 4164D
SPRINGCREEK LINER 56U
FGAF PRECIOUS THING 402T
LFE BS LEWIS 322U
MISS PARKHILL SAGE 81Y

The very first "El Dorado" son, and you will begin to see a theme in them as we go along. Big topped, thick, heavy muscled and hairy and that will apply to everyone. "El Cajon" comes from a super young "Matador" cow. These females have growth, will add pounds and are super milky. If you want to add some milk into a red or black program or just in general this is a bull that will do just that. I am super excited to see the set of steer calves he produces though, I really think that's where he is going to truly shine.



| | |
|------------|----------|
| BW | 95 lbs |
| Sept 1 Wt. | 830 lbs |
| Adj. WW | 722 lbs |
| Dec 15 Wt. | 1200 lbs |
| Adj. YW | 1285 lbs |
| WPDA | 3.43 lbs |

79

ANCHOR D EL PASO 54L

ZDS 54L CA-PG1472684 31-Dec-23
Homozygous Polled Purebred

SVS TYCOON 841F
DEEG EL DORADO 81K
WLB 18D SOFIE 497F

BLACK GOLD EXCALIBUR 137E
ANCHOR D GRACIE 54G
IPU 220X MS. HORIZON 209A

SVS BROOKS 669D
SVS RED ANNIE 411B
SFM STOUGHTON 18D
WLB 52Z TARA 4164D
KUNTZ SUPER DUTY 4Y
RF CERTAINLY FLIRTIN 532C
MAF R HORIZON 7Y
IPU 105L MS. REVILON 220X

This sire group as a whole just excited me, they are just awesome. "El Paso" is a bull that just puts an exclamation mark on that point. I mentioned we went out and added some key pieces to an existing core of cows. "209A" was one of the very first puzzle pieces we added from the great LaBatte program. This cow has sons working for Ferrybank Colony, E & S Hagstrom, Ron Sperber, Battrum Cattle Company, Double S Land & Cattle, and a daughter at Van De Velde Cattle. That's when we realized she has had everything go in the sale pen except "54G" the dam of "El Paso", we need to keep some daughters. This bull is the real deal and stems back to the great "Pocahontas 105L" cow family. Herd bull shopping, look no further.



| | |
|------------|----------|
| BW | 107 lbs |
| Sept 1 Wt. | 890 lbs |
| Adj. WW | 767 lbs |
| Dec 15 Wt. | 1305 lbs |
| Adj. YW | 1399 lbs |
| WPDA | 3.75 lbs |

80

ANCHOR D MOTIVE 34M

ZDS 34M CA-PG1472699 02-Jan-24 Polled Purebred

SVS TYCOON 841F
DEEG EL DORADO 81K
WLB 18D SOFIE 497F

BGS/BM CAPTAIN SCREAM 63D
ANCHOR D FANTASIA 34F
ANCHOR D TIFFANY 343W

SVS BROOKS 669D
SVS RED ANNIE 411B
SFM STOUGHTON 18D
WLB 52Z TARA 4164D
SVS CAPTAIN MORGAN 11Z
RF SCREAM 215Z
PRL TERMINATOR 237T
ANCHOR D TINA 97T



If you don't really need a bull, just a special companion to hang out with, "Motive" would be more than happy to do so, there isn't a worry in his body. Mackenzie showed him at this year's National YCSA show, where he honestly enjoyed everything about the experience. He is the poster child for quiet cattle gain. This is one of our original purebred cow families. We took a couple of our top Fleckvieh cows and bred them red to establish a core group. Back in "Motive's" heritage you will find "Herlinde" one of the best cows we have ever owned. His grand dam just went to town this fall at age 15. Loads of power, longevity and maternal strengths in "Motive".



| | |
|------------|----------|
| BW | 94 lbs |
| Sept 1 Wt. | 820 lbs |
| Adj. WW | 709 lbs |
| Dec 15 Wt. | 1205 lbs |
| Adj. YW | 1296 lbs |
| WPDA | 3.47 lbs |

81 ANCHOR D DE LA VEGA 190M

ZDS 190M CA-PG1472671 03-Jan-24

Homozygous Polled Purebred

SVS TYCOON 841F
DEEG EL DORADO 81K
 WLB 18D SOFIE 497F

WS PRIME BEEF Z8
IPU MS. PRIME BEEF 190D
 IPU MS. HORIZON 18B

SVS BROOKS 669D
 SVS RED ANNIE 411B
 SFM STOUGHTON 18D
 WLB 52Z TARA 4164D
 WS BEEF KING W107
 HSF MISS SKY 87U
 MAF R HORIZON 7Y
 IPU MS. BEEF MAKER 4X

The dam of "De La Vega" has quickly become a favorite in our red program. She is an outstanding "Prime Beef" female we purchased from LaBatte's, and is the dam of Garren's Red show female "Scarlett". This is a cow that looks like a million bucks year round. "De La Vega" shows many of the same characteristics, being super long bodied, dark red, easy fleshing, and a pleasure to work around. He too is another very serious herd bull in the making backed by an outstanding momma cow. These "El Dorado" calves are like rain drops, and they are all good.



| | |
|------------|----------|
| BW | 115 lbs |
| Sept 1 Wt. | 730 lbs |
| Adj. WW | 651 lbs |
| Dec 15 Wt. | 1120 lbs |
| Adj. YW | 1245 lbs |
| WPDA | 3.25 lbs |

82 ANCHOR D EL PUEBLITO 296M

ZDS 296M CA-PG1472730 05-Jan-24

Homozygous Polled Purebred

SVS TYCOON 841F
DEEG EL DORADO 81K
 WLB 18D SOFIE 497F

BLACK GOLD EXCALIBUR 137E
ANCHOR D HATTIE 296H
 ANCHOR D PEEKABOO 5B

SVS BROOKS 669D
 SVS RED ANNIE 411B
 SFM STOUGHTON 18D
 WLB 52Z TARA 4164D
 KUNTZ SUPER DUTY 4Y
 RF CERTAINLY FLIRTIN 532C
 LFE KING LOUIE 3079Y
 ANCHOR D ARLENE 421A

"El Pueblito" is another big stout hairy made "El Dorado" son. He comes from a very nice young "Excalibur" daughter. We had several calves from this same cross and they are all very similar. This will be a bull that will supply extra growth, added pounds, and add that super thick hair coat. The set of feedlot steers this guy will produce will be as good as they come. Once again the heavy weight steers demanded a premium this fall. This is a bull that will put you right on target.



| | |
|------------|----------|
| BW | 103 lbs |
| Sept 1 Wt. | 750 lbs |
| Adj. WW | 686 lbs |
| Dec 15 Wt. | 1125 lbs |
| Adj. YW | 1257 lbs |
| WPDA | 3.34 lbs |

83 ANCHOR D EL HENRIQUE 188M

ZDS 188M CA-PG1473192 13-Jan-24 **Polled Purebred**

SVS TYCOON 841F
DEEG EL DORADO 81K
 WLB 18D SOFIE 497F

ANCHOR D MATADOR 527E
ANCHOR D HENRYKA 188H
 MISS PARKHILL KATTY

SVS BROOKS 669D
 SVS RED ANNIE 411B
 SFM STOUGHTON 18D
 WLB 52Z TARA 4164D
 SPRINGCREEK LINER 56U
 FGAF PRECIOUS THING 402T
 LFE BS LEWIS 322U
 MISS PARKHILL SAGE 81Y

An outstanding big red blaze faced bull. His dam is a very easy keeping deep bodied broody cow, backed by an outstanding cow family. I honestly can't say much different from one of the "El Dorados" to the next as they are stamped one after another. "El Henrique" will sire a fabulous set of steers and his daughters will be wicked. We all saw the big premium the elite replacement heifers brought this fall. This bull will produce those big stout hairy baldie heifers that everyone is fighting over.



| | |
|------------|----------|
| BW | 100 lbs |
| Sept 1 Wt. | 835 lbs |
| Adj. WW | 760 lbs |
| Dec 15 Wt. | 1195 lbs |
| Adj. YW | 1309 lbs |
| WPDA | 3.59 lbs |

84

ANCHOR D EL NINO 443M

ZDS 443M CA-PG1473225 17-Jan-24

Homozygous Polled Purebred

SVS TYCOON 841F
DEEG EL DORADO 81K
 WLB 18D SOFIE 497F

SUNNY VALLEY FORCE 47Y
WLB 47Y FAE 343E
 WLB 756T TRESSIE 3556B

SVS BROOKS 669D
 SVS RED ANNIE 411B
 SFM STOUGHTON 18D
 WLB 52Z TARA 4164D
 MRL RED FORCE 12U
 SUNNY VALLEY SASHA 28W
 CMS TRADEMARK 756T
 ASP BRAVEHEART 8W

"Fae" is no stranger to the winner's circle. She was a key purchase for us from the WLB dispersal where she was the high selling female. As a first calver she produced "Top Tier" who has left his mark on the industry. Her very first calf for us was our high selling purebred bull "Superman" selling to Silver Smith Simmentals. She has only had one daughter to date, and we are very anxious to see what she does this year as a first calver. "El Nino" has been a standout from birth. We feel he will also have an impact on the breed. He is 100K tested and Homozygous Polled, just waiting for the opportunity to go to work. The one thing I forgot to mention about the "El Dorado" calves is their laid back disposition. They honestly have everything you are looking for.



| | |
|------------|----------|
| BW | 100 lbs |
| Sept 1 Wt. | 775 lbs |
| Adj. WW | 718 lbs |
| Dec 15 Wt. | 1165 lbs |
| Adj. YW | 1312 lbs |
| WPDA | 3.5 lbs |

85

ANCHOR D EL SALVADOR 156M

ZDS 156M CA-PG1473234 17-Jan-24

Homozygous Polled Purebred

SVS TYCOON 841F
DEEG EL DORADO 81K
 WLB 18D SOFIE 497F

BLACK GOLD EXCALIBUR 137E
ANCHOR D HELGA 156H
 ANCHOR D DEVAN 479D

SVS BROOKS 669D
 SVS RED ANNIE 411B
 SFM STOUGHTON 18D
 WLB 52Z TARA 4164D
 KUNTZ SUPER DUTY 4Y
 RF CERTAINLY FLIRTIN 532C
 FGAF BARBOSSA 707X
 ANCHOR D BARBARA 345B

Another super dark red, hairy long bodied homozygous polled bull. "El Salvador" has a different blend of pedigree for sure going back to "Barbossa" on the bottom side. A little extra shot of calving ease as well as an extra shot of maternal. His dam is just a young cow only having two calves prior to "El Salvador" a brother selling in last year's sale to Trenson Farms, and a sister retained in our own herd. This is a very nice bull that will work on a huge spectrum of cows. I rank him very good.



| | |
|------------|----------|
| BW | 93 lbs |
| Sept 1 Wt. | 780 lbs |
| Adj. WW | 770 lbs |
| Dec 15 Wt. | 1090 lbs |
| Adj. YW | 1242 lbs |
| WPDA | 3.48 lbs |

86

ANCHOR D EL DIABLO 304M

ZDS 304M CA-PG1473538 06-Feb-24 **Polled Purebred**

SVS TYCOON 841F
DEEG EL DORADO 81K
 WLB 18D SOFIE 497F

KUNTZ SUPER DUTY 4Y
ANCHOR D ELMIRA 304E
 ANCHOR D ROCHELLE 315A

SVS BROOKS 669D
 SVS RED ANNIE 411B
 SFM STOUGHTON 18D
 WLB 52Z TARA 4164D
 NCB RED SUSPECT 30S
 MISS R PLUS 7037T
 MR NLC SUPERIOR S6018
 MSCC RACHEL 101R

I have always been a pretty big fan of "El Diablo". He comes from a really nice black cow that goes back to our original foundation black cow family, "Painted Smile AKA Moe". This has been a super productive cow family for us and has produced many high sellers over the years. Just prior to yearling weights this guy ended up with a big cut on the back of his foot so his weight may be down slightly from where it should be but not dramatically, and his picture may look a bit off from his usual self, but trust me when I say this is a top shelf bull.



| | |
|------------|----------|
| BW | 107 lbs |
| Sept 1 Wt. | 795 lbs |
| Adj. WW | 693 lbs |
| Dec 15 Wt. | 1290 lbs |
| Adj. YW | 1447 lbs |
| WPDA | 3.68 lbs |

87

**ANCHOR D ADR
CHOCOLATE THUNDER**

ADR 225L CA-BPG1472668 30-Dec-23
Homozygous Polled Purebred

SVS TYCOON 841F
DEEG EL DORADO 81K
WLB 18D SOFIE 497F

SUN RISE PILLAR 3D
ANCHOR D GARREN'S AERO 225G
LFE BS HARLOW 123D

SVS BROOKS 669D
SVS RED ANNIE 411B
SFM STOUGHTON 18D
WLB 52Z TARA 4164D
SVS CAPTAIN MORGAN 11Z
BLACKSAND TARA LYNN 79Y
LFE POWER WAGON 365A
LFE BS HARLOW 630Y

When we were taking yearling weights this is honestly a bull that surprised me. I knew he was good, and was growing well, I just didn't realize how good he actually was. A long smooth made bull who is flawless in makeup. Much like the rest of the "El Dorado" sire group, a tremendous hair coat, big topped, and that same laid back disposition. This guy comes from a total different cow family that Garren purchased from Lewis Farms as a heifer. A very nice pedigree, and a very nice bull to go along with it.



| | |
|------------|----------|
| BW | 102 lbs |
| Sept 1 Wt. | 830 lbs |
| Adj. WW | 727 lbs |
| Dec 15 Wt. | 1230 lbs |
| Adj. YW | 1337 lbs |
| WPDA | 3.55 lbs |

88

ANCHOR D ELWAY 60M

ZDS 60M CA-BPG1472716 04-Jan-24 **Polled Purebred**

SVS TYCOON 841F
DEEG EL DORADO 81K
WLB 18D SOFIE 497F

WFL ABSOLUTE 51Y
NAC 20C
NAC 62A

SVS BROOKS 669D
SVS RED ANNIE 411B
SFM STOUGHTON 18D
WLB 52Z TARA 4164D
LFE STRAIT UP 454W
WFL MS BLACK FLASH 8068U
MRLN ROGAR
NAC SAMANTHA 74W

I had mentioned earlier we stepped up and bought a group of cows we felt were potential game changers for our purebred division. 3 of those cows came from the WLB Dispersal, and all three have top bulls in this year's sale. This was Karen's pick of the cows. "Nic Nac" as she's known is a really sweet dispositioned cow. Heavy milking, and lots of performance. As you can see with "Elway" there is no lack of production. If you have a set of red or Black Angus cow you want to add some pounds to, and add a touch of chrome in the process, this is a top pick for you. He is going to sire a smashing set of calves of both sexes, that have the potential to be sale toppers. I love everything about this bull.



| | |
|------------|----------|
| BW | 102 lbs |
| Sept 1 Wt. | 730 lbs |
| Adj. WW | 756 lbs |
| Dec 15 Wt. | 1115 lbs |
| Adj. YW | |
| WPDA | 3.69 lbs |

89

ANCHOR D ELLIS 277M

ZDS 277M CA-BPG1473573 17-Feb-24
Homozygous Polled Purebred

SVS TYCOON 841F
DEEG EL DORADO 81K
WLB 18D SOFIE 497F

SKORS HIGH ROLLER 34C
WLB 34C HEIDI 477G
WLB 52Z TARA 367E

SVS BROOKS 669D
SVS RED ANNIE 411B
SFM STOUGHTON 18D
WLB 52Z TARA 4164D
HSF HIGH ROLLER 12T
SKORS JEWEL 226A
MRL EL TIGRE 52Z
BLACKSAND TESS 51A

"Ellis" is the third of the calves from the WLB cows. When we purchased these females at the dispersal we bought two proven females, but my personal favorite was the unproven bred heifer. Well she's proven now. This female is a knock out, I would love a whole herd just like her. Picture perfect udder, big solid foot, angular and broody, and she looks in mint condition 24-7. The "High Rollers" were my favorite sire group that day, and this female is proving her worth to us. Please note this is a younger bull, not even a year old sale day. Look at the performance on this guy. He is a bull that will no doubt be worth more value each day in the spring. I score him incredibly high, check him out.



| | |
|------------|----------|
| BW | 88 lbs |
| Sept 1 Wt. | 840 lbs |
| Adj. WW | 758 lbs |
| Dec 15 Wt. | 1265 lbs |
| Adj. YW | 1406 lbs |
| WPDA | 3.75 lbs |

90 ANCHOR D PENDLETON 236M

ZDS 236M CA-PG1473190 13-Jan-24

Homozygous Polled Purebred

MRL RED WHISKEY 101B
RED SODER WHISKEY 643H
 RED SODER MS HORIZON 6676D
 WHEATLAND CIRCUIT BREAKER
OAKVIEW CAMILA 226C
 OAKVIEW ACCOMPLISH 62A

TNT BOOTLEGGER Z268
 MRL MISS 677Y
 RED SODER HORIZON 693B
 SODER MS WOLFMAN 3796A
 WHEATLAND HIGHVOLTAGE122Y
 WHEATLAND LADY 81X
 IPU REVOLUTION 172U
 LRX RED RASPBERRY 71T

"Pendleton" is the lone "Whiskey" representative this year. We were very pleased with the job he did for us but didn't get used quite as heavily as the year before because of the addition of "El Dorado", and well when you have a new \$110,000 bull, you use him. Well he might be the only one, but you can't miss him. This is a big bodied powerhouse bull. Loads of hair, moderate birth, coming from a very steady producing old cow for us from Oakview Simmentals. She has produced breeder bulls in the past for Homestead T Simmentals, MB & Stone Simmentals, as well as good commercial bulls for Ferrybank Colony & Dennis Herman, as well as a couple great cows for our own herd. This is a very good bull that anyone can use.



| | |
|------------|----------|
| BW | 101 lbs |
| Sept 1 Wt. | 750 lbs |
| Adj. WW | 687 lbs |
| Dec 15 Wt. | 1220 lbs |
| Adj. YW | 1404 lbs |
| WPDA | 3.67 lbs |

91 ANCHOR D HEAT WAVE 381M

ZDS 381M CA-PG1473250 18-Jan-24

Homozygous Polled Purebred

WHL RED HEAT 1734E
CIRCLE G HEAT WAVE 10H
 CIRCLE G DREAM GAL 838F

WFL WESTCOTT 24C
ANCHOR D CAMILA 381G
 OAKVIEW CAMILA 226C

HOOKS SHEAR FORCE 38K
 CMS SODA POP 422B
 R PLUS VENOM 4006B
 SKORS DREAM GAL 223B
 TNT 90 PROOF Z401
 WFL SWEET LICIOUS 1044X
 WHEATLAND CIRCUIT BREAKER
 OAKVIEW ACCOMPLISH 62A

"Heat Wave" comes to us from a new bull to us. We purchased a small amount of semen on his sire, and I wish we would have bought more. We were very impressed with how well he calved, the length of spine in his calves, super dark red and very vigorous. This bull is from the same cow family as the bull prior to him, and you can see the track record there. Another super user friendly bull that will work on a broad spectrum of cows and comes with the added bonus of being Homozygous polled as well.



| | |
|------------|----------|
| BW | 83 lbs |
| Sept 1 Wt. | 730 lbs |
| Adj. WW | 747 lbs |
| Dec 15 Wt. | 985 lbs |
| Adj. YW | 1136 lbs |
| WPDA | 3.01 lbs |

92 ANCHOR D TOP NOTCH 269M

ZDS 269M CA-PG1473476 23-Jan-24

Homozygous Polled Purebred

MAR MAC UTAH WHISKY 52E
WLB TOP TIER 456G
 WLB 47Y FAE 343E

BLACK GOLD EXCALIBUR 137E
ANCHOR D JOSIE 269J
 ANCHOR D FANTASIA 34F

TNT BOOTLEGGER Z268
 MAR MAC UTAH'S DREAM 79U
 SUNNY VALLEY FORCE 47Y
 WLB 756T TRESSIE 3556B
 KUNTZ SUPER DUTY 4Y
 RF CERTAINLY FLIRTIN 532C
 BGS/BM CAPTAIN SCREAM 63D
 ANCHOR D TIFFANY 343W

"Top Notch" should be a heifer bull deluxe. We have used "Top Tier" now for the past few years on first calving heifers with great success. They calve really well, but certainly have enough grow, and lots of shape in them. No they aren't the biggest in the pen, but also not designed to be. I truly feel anyone looking for a near bomb proof heifer bull "Top Notch" comes as described. As a bonus I don't feel he is a bull that will ever develop into a towering monster so he will be the perfect fit for many years to come. Don't overlook the fact this bull still has decent performance. He comes from a first calver, but certainly is no slouch. Love him for what he's built for, he's the right kind.



| | |
|------------|----------|
| BW | 108 lbs |
| Sept 1 Wt. | 890 lbs |
| Adj. WW | 803 lbs |
| Dec 15 Wt. | 1235 lbs |
| Adj. YW | 1329 lbs |
| WPDA | 3.65 lbs |

93



ANCHOR D ADR

CAPTAIN CRUNCH 23M

ADR 23M CA-BPG1472785 12-Jan-24

Homozygous Polled Purebred

HARVIE JDF WALLBANGER111X
SVS CAPTAIN MORGAN 11Z
 SUNNYVALLEY BLK JENNA 88U

DRAKE POKER FACE 2X
IPU MS. TULA 13B
 ACS MISS EXCHANGE 239Z

SHS ENTICER P1B
 JDF PEPSI 61U
 RLA REDSTREAM 152S
 WLB 32H JENNA 360R
 JS SURE BET 4T
 DRAKE TULA 1R
 MR HOC BROKER
 BLCC MISS BLACKJACK 128X

"Captain Crunch" is our first ever "Captain Morgan" born at our place and he just makes you wonder why we haven't used him before. Truly a stud. His dam was a heifer calf we purchased for Garren from the LaBatte program. She was a very productive cow for him over the years. Unfortunately she came in open this fall, but what a bull she left to close her career with. Wanting to make Bulls, Steers or Cows, "Captain Crunch" will do it all. We have listed him as Homozygous polled which he should be by pedigree but please note we did not send DNA in on him.



| | |
|------------|----------|
| BW | 100 lbs |
| Sept 1 Wt. | 870 lbs |
| Adj. WW | 870 lbs |
| Dec 15 Wt. | 1200 lbs |
| Adj. YW | 1200 lbs |
| WPDA | 3.52 lbs |

94



TM BACK TO BLACK 402M

TRIN 402M CA-BPG1470495 09-Jan-24

Homozygous Polled Purebred

NGDB STRUCTURE 34D
RF CALIBER 014G
 RF NOT JUST A FLIRT 404B

W/C LOADED UP 1119Y
BLACK GOLD MS AVA 88F
 FSCI AVA B408

NCB COBRA 47Y
 NGDB LOUISE 411 B
 SVS CAPTAIN MORGAN 11Z
 RF CERTAINLY FLIRTIN 202Z
 REMINGTON LOCK N LOAD 54U
 AUBREYS BLACK BLAZE III
 SVF/NJC BUILT RIGHT N48
 CNS BLACK STAR T702

"Back to Black" is Trinity's bull. I am super impressed with the "Caliber" cattle, they are just plumb awesome. The dam of this bull is much like Trinity, she may be small but she be mighty. I dare say pound for pound this will be one of the hardest working cows here, and she is backed by a great pedigree as well. This cow impressed me all summer long with this big monster at side. When you analyze this bull he is very fault free. Big free moving loads of hair big topped and a great disposition. Score him high you will love him.



| | |
|------------|----------|
| BW | 109 lbs |
| Sept 1 Wt. | 885 lbs |
| Adj. WW | 818 lbs |
| Dec 15 Wt. | 1320 lbs |
| Adj. YW | 1480 lbs |
| WPDA | 3.99 lbs |

95



ANCHOR D ADR HOT TAKE 227M

ADR 227M UNR1473253 19-Jan-24

Homozygous Polled Purebred

NGDB STRUCTURE 34D
RF CALIBER 014G
 RF NOT JUST A FLIRT 404B

R PLUS RELOAD 2006Z
WFL RED SAGE 506C
 WFL RED SAGE 1003Y

NCB COBRA 47Y
 NGDB LOUISE 411 B
 SVS CAPTAIN MORGAN 11Z
 RF CERTAINLY FLIRTIN 202Z
 R PLUS HARD ROCK 145X
 IPU RED BARONESS 1T
 R PLUS REDGE 8018U
 3D MISS SAGE 140 W

"Caliber x Sage" what more really needs to be said. This is a pair of cattle that have written their own chapter in the Simmental History book. Garren purchased embryos on this cross, and I'm pretty certain he was hoping to get himself a couple heifers to build a base around. Well that didn't happen, but what an incredible bull he ended up with in "Hot Take". This bull is the real deal, and certainly a bull that will add value to anyone's program. Purebred or commercially the guess work has all been taken out this is a bull that will do amazing things in his time.



| | |
|------------|----------|
| BW | 91 lbs |
| Sept 1 Wt. | 805 lbs |
| Adj. WW | 724 lbs |
| Dec 15 Wt. | 1055 lbs |
| Adj. YW | 1105 lbs |
| WPDA | 3.14 lbs |

96

ANCHOR D MONTAGO 551M

ZDS 551M CA-BPG1473193 14-Jan-24 Polled Purebred

REMINGTON LOCK N LOAD 54U
SRH HANNIBAL 5H
 SRH PRECIOUS 73A

PVF-BF BF26 BLACK JOKER
PARVIEW MS BLK KYRA 551C
 PARVIEW'S RED KYRA

REMINGTON ON TARGET 2S
 BAR 15 MISS KNIGHT78E-51G
 WHEATLAND BULL 786T
 OBCC CHYNA C49U
 HARTS BLACK CASINO B408
 PVF-BF MABELLE C131
 KLYBER
 BAR 15 BEEBA 34P

"Montago" comes from one of my personal favorite black cows. This is a great cow with a very unique pedigree, a 1/4 Fleckvieh "Black Joker" daughter, pretty sure you won't find a lot of them out there. We have used "Hannibal" as a calving ease bull, and I really like the style and correctness of the cattle, so we wanted to see what he could do with some cow power. "Montago" is a very nice profiled bull with lots of shape and substance to him. He has a very workable birth weight and is truly a very user friendly bull. This is a bull with a very bright future.



| | |
|------------|----------|
| BW | 98 lbs |
| Sept 1 Wt. | 785 lbs |
| Adj. WW | 717 lbs |
| Dec 15 Wt. | 1105 lbs |
| Adj. YW | 1205 lbs |
| WPDA | 3.3 lbs |

97

ANCHOR D MADDEN 107M

ZDS 107M CA-BPG1473207 15-Jan-24

Homozygous Polled Purebred

REMINGTON LOCK N LOAD 54U
SRH HANNIBAL 5H
 SRH PRECIOUS 73A

SVS CAPTAIN MORGAN 11Z
SUN RISE BLACK 7B
 BLACKSAND TARA LYNN 79Y

REMINGTON ON TARGET 2S
 BAR 15 MISS KNIGHT78E-51G
 WHEATLAND BULL 786T
 OBCC CHYNA C49U
 HARVIE JDF WALLBANGER111X
 SUNNYVALLEY BLK JENNA 88U
 SPRINGCREEK LINER 56U
 SPRINGCREEK TARA 7P

"Madden" will complete our Simmental section. A similar story to the last bull in using "Hannibal" on some power cows. The dam of "Madden" is not just any old cow either, she happens to be a full sister to "Sun Rise Pilar", a bull we have really grown to appreciate for his calving ease and incredible growth. This is a bull with an excellent pedigree, and well he has the looks to match him on paper. Big or small, he'll breed em all, and do a great job in the process.



Commercial Heifers

Weights and info available sale day

This year Grandma Joyce only has 3 heifers to sell. Her numbers have been getting smaller as she hasn't been retaining any heifers for the past several years, so essentially these are the top cut. She did have 5 heifers this year, one Fullblood and one with tipped ears so they didn't fit the package so she decided to retain those two for herself, as it has been several years since any heifers have been retained as her cows are starting to age. The three heifers offered are exceptional. All three are from great cows, and cow families. They have been managed right along our replacement heifers. They have had 2 rounds of Express 10, Vision, Safe Guard & Clean up.

98

COMMERCIAL HEIFER 6M

Sire: LEACHMAN BODYBUILDER
 BD: Jan 4, 2024
 Dec 17 Wt: 900 lbs

99

COMMERCIAL HEIFER 13M

Sire: ; Red Soder Whiskey 643H
 BD: Jan 12, 2024
 Dec 17 Wt: 945 lbs

100

COMMERCIAL HEIFER 20M

Sire: ; Red Soder Whiskey 643H
 BD: Jan 20, 2024
 Dec 17 Wt: 890 lbs

This year Charolais division looks a bit different. It is much larger than the past due to the addition of Bob Burla's bulls. We were fortunate to have leased a core group of cows from Bob to kick start our program, and this past fall the decision was made to disperse his cow herd. The bulls were all retained and will be sold along with ours this year, so this will be the last chance to buy a Bob Bull. Our own Charolais Bull numbers are also slightly up. We are super excited about the direction we are headed with this division, and we were able to assemble a very good nucleus of cows from Bob's dispersal to add to our own program. Much of the guess work was done for us as we virtually had a 4 year trial run on them so we are very excited about the future of our own program. (Only 2 of the cows we purchased from the dispersal are new to our herd.) This group of 49 Charolais bulls was assembled from about 250 momma cows, so they have been sorted through to say the least. Regardless if it is an Anchor D Bull or a Bob Bull they will all fly under the same banner so buy them with confidence as they are backed by the same Anchor D satisfaction. Although our Charolais program is still relatively new keep in mind when we added the Burla cows there are over 30 years of breeding behind them, it's a new program with old roots.



Game Day



Defender



Vision



Blackjack



Heavy Duty



Ruger



Chuckwagon



Go North



Mr White



Force



Jake



| | |
|------------|----------|
| BW | 93 lbs |
| Sept 1 Wt. | 715 lbs |
| Adj. WW | 696 lbs |
| Dec 15 Wt. | 1090 lbs |
| Adj. YW | 1267 lbs |
| WPDA | 3.14 lbs |

101

ANCHOR D MARTEL 49M

ZDS 49M MC883516 03-Jan-24 Polled Purebred

LAE MEMPHIS 767E
LEGACYS GAME DAY 45G
LEGACYS DOMINO 52D

HIGH BLUFF GAME ON 78G
HIGH BLUFF JIVE 49J
HIGH BLUFF JIVE 81E

SPARROWS ESCOBAR 429B
LAE DOLLY 226Z
PRO-CHAR CURLY 98B
LEGACYS AYOMING 5A
CJC SYMBOL B1067P
HIGH BLUFF BUSTER 176W
HIGH BLUFF CASANOVA 13C
HIGH BLUFF JIVE 139Y

"Martel" is the first of the "Game Day" sons to sell. I have had the opportunity to sell several of his sons over the past couple of years, and I dare say he is one of the most sought after bulls on the market today. These sons are outstanding. All big loose made bulls with tons of hair, eye appeal, capacious, sound footed, and just damn good. Fill a feedlot full of steers with bulls like these you will not go wrong..



| | |
|------------|----------|
| BW | 90 lbs |
| Sept 1 Wt. | 780 lbs |
| Adj. WW | 674 lbs |
| Dec 15 Wt. | 1165 lbs |
| Adj. YW | 1262 lbs |
| WPDA | 3.36 lbs |

102 ANCHOR D MAQUIRE 875M

ZDS 875M MC883517 03-Jan-24 Polled Purebred

LAE MEMPHIS 767E
LEGACYS GAME DAY 45G
 LEGACYS DOMINO 52D

CIRCLE CEE LEGEND 307A
LAE FUSCHIA 875F
 LAE SWEET PEA 6134D

SPARROWS ESCOBAR 429B
 LAE DOLLY 226Z
 PRO-CHAR CURLY 98B
 LEGACYS AYOMING 5A
 LT LEDGER 0332 P
 CIRCLE CEE STUNNING 125Y
 MERIT ROUNDUP 9508W
 MNE PUFF 21P

The dam of "Maquire" has been a solid producer for us. She raised our high selling Charolais bull last year selling to Steve Saruga, and then came right back with this dandy "Game Day" son. This is a bull that certainly has enough gas to get there, and as an added bonus a bit more calving ease from "Legend" on the bottom side of the pedigree. A very likeable bull that should no doubt have several friends sale day.



| | |
|------------|----------|
| BW | 114 lbs |
| Sept 1 Wt. | 785 lbs |
| Adj. WW | 747 lbs |
| Dec 15 Wt. | 1170 lbs |
| Adj. YW | 1334 lbs |
| WPDA | 3.61 lbs |

103 ANCHOR D MESMERIZE 501M

ZDS 501M MC883554 26-Jan-24 Homozygous Polled Purebred

LAE MEMPHIS 767E
LEGACYS GAME DAY 45G
 LEGACYS DOMINO 52D

CSS SIR NAVIGATOR 20Y
FFBB ABBI 307A
 FFBB MISS SILVA PLD 730T

SPARROWS ESCOBAR 429B
 LAE DOLLY 226Z
 PRO-CHAR CURLY 98B
 LEGACYS AYOMING 5A
 PCC NAVIGATOR 403P
 CSS LADY FATHOM 21T
 HTA ULTIMATE 448P
 FFBB MISS SILVA PLD 459P

Something new to us last year was an embryo division in our Charolais program. "Mezmerize" is the result of that. The "Abbi" cow is one of the cows we had leased from Bob, and we managed to get a flush on her to "Game Day". This is one of the key cow families we were focusing on and we now have about 10 females going back to this cow family, so that should tell you lots about how we feel about them. "Mezmerize" was the lone bull from the flush, and he is pretty special. A great bull backed by a great cow family. Regardless of where he ends up he is going to do great things.



| | |
|------------|----------|
| BW | 102 lbs |
| Sept 1 Wt. | 665 lbs |
| Adj. WW | 631 lbs |
| Dec 15 Wt. | 1085 lbs |
| Adj. YW | 1271 lbs |
| WPDA | 3.36 lbs |

104 ANCHOR D MOJAVE 742M

ZDS 742M MC884908 27-Jan-24 Homozygous Polled Purebred

LAE MEMPHIS 767E
LEGACYS GAME DAY 45G
 LEGACYS DOMINO 52D

SPARROWS ESCOBAR 429B
LAE ESSENCE 742E
 LAE UNO 801U

SPARROWS ESCOBAR 429B
 LAE DOLLY 226Z
 PRO-CHAR CURLY 98B
 LEGACYS AYOMING 5A
 WINN MANS SKAGGS 663X
 SPARROWS ANGEL 58T
 LT BLUEGRASS 4017 P
 LAE SPUR'S FANFARE 616S

The dam of "Mojave" was purchased from the Sterling Collection sale as the high seller from Horse Shoe E the year she sold. Karen refers to her as the pretty cow, as honestly you won't make one any better. This is a beautiful cow, very angular, great footed, smooth and feminine. The cross with "Game Day" is very complimentary as this bull has enough power, shape and boldness, but still presents a touch of class. Big hair coat, big growth, big time, he is as real as they come.



| | |
|------------|----------|
| BW | 110 lbs |
| Sept 1 Wt. | 730 lbs |
| Adj. WW | 635 lbs |
| Dec 15 Wt. | 1020 lbs |
| Adj. YW | 1076 lbs |
| WPDA | 2.94 lbs |

105

ANCHOR D METALLIC 78M

ZDS 78M MC883524 03-Jan-24 **Purebred**

RGP REMINGTON 101Y
HTA DEFENDER 846F
 HTA HOT STUFF 349A

SOS HOME GROWN 15C
BOB'S BUCKLE BUNNY 78E
 ALT AUTUMN 108S

MERIT 8789U
 RGP LUCILLE 101L
 HTA CHALLENGE 161Y
 STA HOT STUFF 106Y
 WINN MANS CHAVEZ 826Y
 SOS SPRINGSIDE'S ADELE 167
 HFCC PLD BOND 19L
 PRAIRIE COVE MISS 4K

The dam of "Metallic" was one of the cows sold this fall in Bob's dispersal for \$10,000. She is a big broody female that will have 2 grandsons in the sale that we are quite certain you will really appreciate. We walked "Defender" last year, and quite appreciated the job he did. He left a nice set of sons, and his daughters are remarkably good. This will be a very solid bull that will sire some high performance feedlot steers.



| | |
|------------|----------|
| BW | 108 lbs |
| Sept 1 Wt. | 765 lbs |
| Adj. WW | 682 lbs |
| Dec 15 Wt. | 1105 lbs |
| Adj. YW | 1200 lbs |
| WPDA | 3.23 lbs |

106

ANCHOR D MARDELL 91M

ZDS 91M MC883531 08-Jan-24 **Polled Purebred**

RGP REMINGTON 101Y
HTA DEFENDER 846F
 HTA HOT STUFF 349A

CSS SIR GRIDMAKER 2W
ALT SHAKTI 91A
 ALT REBA 91Y

MERIT 8789U
 RGP LUCILLE 101L
 HTA CHALLENGE 161Y
 STA HOT STUFF 106Y
 KAYR GRID GRID IRON 400S
 CSS LADY RED NAVIGATOR 1T
 SVY PILGRIM PLD 655S
 ALT RED BOND 109S

When we picked the cows we did to start our Char program, we went for big power, high performance cows with added frame. We truly feel the strength of the breed is to use as a terminal cross and sire the highly sought after feedlot cattle. The dam of "Mardell" was a very key piece to the group. In her time with us she produced 2 bulls selling to Lane Purdie & Peter & Cec Dykstra, as well as "Mardell". This will be a bull that will cross extremely well on any type of cow. Use him to add some frame and size.



| | |
|------------|----------|
| BW | 107 lbs |
| Sept 1 Wt. | 850 lbs |
| Adj. WW | 763 lbs |
| Dec 15 Wt. | 1205 lbs |
| Adj. YW | 1304 lbs |
| WPDA | 3.5 lbs |

107

ANCHOR D MISSILE 1M

ZDS 1M MC883532 09-Jan-24 **Polled Purebred**

RGP REMINGTON 101Y
HTA DEFENDER 846F
 HTA HOT STUFF 349A

GERRARD PASTOR 35Z
SOS CINEPLEX 1C
 WOOD RIVER PRINCESS 28N

MERIT 8789U
 RGP LUCILLE 101L
 HTA CHALLENGE 161Y
 STA HOT STUFF 106Y
 GERRARD PREACHER 31U
 GERRARD ROXANNE 18P
 P-3 PERFECT LAD 0-17K
 WOOD RIVER SHANIA 39J

"Missile" is a big performance bull. He comes from a "Pastor x Mr. Perfect" cow so you know you will have added frame, power & performance. We had several "Pastor" daughters and I scored them very good. Highly productive cows that could certainly bring in a big calf. This is another bull I think you target to use him on cows you want to add some size and frame to. Once again we all know the big steers demanded a premium again this fall. This guy's calves will take off like a "Missile" when they hit feed in the feedlot.



| | |
|------------|----------|
| BW | 109 lbs |
| Sept 1 Wt. | 720 lbs |
| Adj. WW | 652 lbs |
| Dec 15 Wt. | 1060 lbs |
| Adj. YW | 1170 lbs |
| WPDA | 3.09 lbs |

108

ANCHOR D MONTY 52M

ZDS 52M MC883538 12-Jan-24 Polled Purebred

RGP REMINGTON 101Y
HTA DEFENDER 846F
 HTA HOT STUFF 349A

SOS POLLED DETONATOR 8M
SOS IGGY AZALEA 52B
 VFF VIKSE LUCY 314Z

MERIT 8789U
 RGP LUCILLE 101L
 HTA CHALLENGE 161Y
 STA HOT STUFF 106Y
 LHD MR PERFECT Y416
 P-3 LADY MONTE 0-80Z
 ROCKING HEART POWER 11X
 SDC LUCY 76P

It has been a bit of a learning curve for us on the Charolais for sure. A lot like learning to speak a new language. New bloodlines, new crosses, but one thing we have learned for sure is they are a pleasure to put on feed. These guys hit the bunk and don't look back. "Monty" is another bull who comes from a big high performance cow. He too is a bull that should scale them up a frame size add some hair and stretch in the process. Coming from a big powerful broody cow. Maybe a bit of a sleeper in the pen.



| | |
|------------|----------|
| BW | 90 lbs |
| Sept 1 Wt. | 750 lbs |
| Adj. WW | 754 lbs |
| Dec 15 Wt. | 1065 lbs |
| Adj. YW | 1234 lbs |
| WPDA | 3.18 lbs |

109

ANCHOR D MAJOR 146M

ZDS 146M MC883543 15-Jan-24 Polled Purebred

RGP REMINGTON 101Y
HTA DEFENDER 846F
 HTA HOT STUFF 349A

HIGH BLUFF CASANOVA 13C
HIGH BLUFF JIVE 146J
 HIGH BLUFF JIVE 75E

MERIT 8789U
 RGP LUCILLE 101L
 HTA CHALLENGE 161Y
 STA HOT STUFF 106Y
 SILVERSTREAM GEDDES G102
 HIGH BLUFF ESPERENZA 15Y
 SCX TRIUMPH 50B
 HIGH BLUFF JIVE 109A

We purchased the dam of "Major" from High Bluff Stock Farms. This is a beautiful young female. One note of interest is we did use "Defender" on a handful of heifers with good success. When you look at the birth weights of the last few you may question that, but also look at how smoothly made they are and consider they come from big old performance cows. Now here is one from a more moderate framed young cow and you see what we mean as he is a very moderate birth weight. This is a bull I feel very confident in sending to anyone. He will suit all types.



| | |
|------------|----------|
| BW | 95 lbs |
| Sept 1 Wt. | 720 lbs |
| Adj. WW | 701 lbs |
| Dec 15 Wt. | 1055 lbs |
| Adj. YW | 1212 lbs |
| WPDA | 3.28 lbs |

110

ANCHOR D MOXIE 21M

ZDS 21M MC883556 28-Jan-24 Purebred

RGP REMINGTON 101Y
HTA DEFENDER 846F
 HTA HOT STUFF 349A

BOB'S GAMBINO 12F
BOB'S LOVIN' ON YOU 21H
 BOB'S ESSENCE 116E

MERIT 8789U
 RGP LUCILLE 101L
 HTA CHALLENGE 161Y
 STA HOT STUFF 106Y
 CML GUSTO 662D
 BWP WISH LIST 8W
 SOS CHUCK WAGON 54C
 FFBB ABB1 307A

The dam of "Moxie" was one of the cows quite high on the wish list of cows in Bob's dispersal. We managed to purchase her as well as her dam and her dam's sister as this is one of the great cow families in our opinion. "Moxie" is a bull who has great presence. Deep sided, broad topped, lots of hair tremendous foot structure and a very nice workable birth weight. He too is a bull who will virtually work for anyone on any type of cow. Versatility at its finest.



| | |
|------------|----------|
| BW | 101 lbs |
| Sept 1 Wt. | 670 lbs |
| Adj. WW | 667 lbs |
| Dec 15 Wt. | 1020 lbs |
| Adj. YW | 1200 lbs |
| WPDA | 3.28 lbs |

111

ANCHOR D MADDOX 144M

ZDS 144M MC883562 08-Feb-24 Polled Purebred

RGP REMINGTON 101Y
HTA DEFENDER 846F
 HTA HOT STUFF 349A

CSS SIR NAVIGATOR 20Y
SOS JESSIE PLD 144D
 SOS PRINCESS KATE 33Y

MERIT 8789U
 RGP LUCILLE 101L
 HTA CHALLENGE 161Y
 STA HOT STUFF 106Y
 PCC NAVIGATOR 403P
 CSS LADY FATHOM 21T
 SDC KING RANCH 70T
 SOS JESSICA 1150S

Because we are still in the development stages of this program I must admit I was really hoping "Maddox" would be a heifer when he was born. Note the birth date on him, as he will not quite be a year old sale day. This is an awesome momma cow he comes from going back to the "Princess Kate" cow family. We were fortunate enough to purchase his dam in the dispersal but let his full sister go, as she ended up being the sales high seller for \$17,000 to Mallory's Livestock. This is a bull that will be a power house, and will only get better and better with time.



| | |
|------------|----------|
| BW | 99 lbs |
| Sept 1 Wt. | 700 lbs |
| Adj. WW | 642 lbs |
| Dec 15 Wt. | 1100 lbs |
| Adj. YW | 1252 lbs |
| WPDA | 3.31 lbs |

112

ANCHOR D MONTEL 109M

ZDS 109M MC883548 18-Jan-24 Polled Purebred

RGP REMINGTON 101Y
HTA DEFENDER 846F
 HTA HOT STUFF 349A

SOS HARVESTER PLD 61C
BOB'S SANTA CLARITA 109E
 ANCHOR ZOLA 22Z

MERIT 8789U
 RGP LUCILLE 101L
 HTA CHALLENGE 161Y
 STA HOT STUFF 106Y
 CSS SIR NAVIGATOR 20Y
 SOS PRINCESS KATE 33Y
 ANCHOR WRANGLER 14W
 ANCHOR WHISPER 24W

The dam of "Montel" is a cow we really liked a lot, and is a cow we no doubt would have liked to have added back into our own herd. She raised a really nice full brother to "Montel" last year selling to 6U Cattle Co. This is another really user friendly bull. A bull that is built long and smooth still has lots of power and shape. I feel he is a bull that will look spectacular on any type of cow but boy I see him hitting an absolute home run on a set of Simmental cows. Buy boxing gloves to give out when you sell his calves as the buyers will be fighting over them.



| | |
|------------|----------|
| BW | 102 lbs |
| Sept 1 Wt. | 650 lbs |
| Adj. WW | 649 lbs |
| Dec 15 Wt. | 990 lbs |
| Adj. YW | 1168 lbs |
| WPDA | 3.19 lbs |

113

ANCHOR D MERLOT 48M

ZDS 48M MC883561 09-Feb-24 Polled Purebred

RGP REMINGTON 101Y
HTA DEFENDER 846F
 HTA HOT STUFF 349A

WINN MANS CHAVEZ 826Y
BOB'S GARDENIA 48G
 SOS BABY GIRL 21B

MERIT 8789U
 RGP LUCILLE 101L
 HTA CHALLENGE 161Y
 STA HOT STUFF 106Y
 MERIT 7329T
 WINN MANS BREATHLESS 826U
 CSS SIR NAVIGATOR 20Y
 FFBB MOMMAGIRL PLD 930W

Another youngster in the pen. This is a bull who has just started to make a move. At the time we are building the catalogue and picturing some of these younger bulls are only 10 months old and are honestly just starting to hit their stride. That's where "Merlot" fits in. This is a bull who will just continue to get stronger with each passing day. Remember when you turn cows out. Some of these younger bulls will have changed immensely, and for the better. This will be a great investment and be a bull that you reap big rewards from.



| | |
|------------|----------|
| BW | 91 lbs |
| Sept 1 Wt. | 675 lbs |
| Adj. WW | 680 lbs |
| Dec 15 Wt. | 1135 lbs |
| Adj. YW | 1380 lbs |
| WPDA | 3.35 lbs |

114

ANCHOR D MUNROE 145M

ZDS 145M MC883536 11-Jan-24 Polled Purebred

CIRCLE CEE LEGEND 307A
DRD VISION 848H
 JWX ECSTATIC 848D

RGP HEAVY DUTY 33H
BOB'S RUE 45K
 BOB'S EUPHORIA 36G

LT LEDGER 0332 P
 CIRCLE CEE STUNNING 125Y
 ELDER'S ZEUS 22Z
 KCM ECSTATIC 312N
 TURNBULLS DUTY-FREE 358D
 RGP ROSE BUD 33B
 BOB'S INTEGRITY 126E
 SOS MELANNIE 119A

"Vision" has done a very nice job for us. He is a bull we have confidently used in our heifer pen, still adds more than enough performance, and now we are seeing his first daughter develop into blossoming young cows and they look very good. "Munroe" is a bull who will offer calving ease, but lots of growth. Look how he turned things on post weaning, and appreciate the big thick hair coat he has. This is a bull that will work for everyone and once again produce a smashing great set of steers.



| | |
|------------|----------|
| BW | 78 lbs |
| Sept 1 Wt. | 640 lbs |
| Adj. WW | 669 lbs |
| Dec 15 Wt. | 1060 lbs |
| Adj. YW | 1308 lbs |
| WPDA | 3.22 lbs |

115

ANCHOR D MAESTRO 115M

ZDS 115M MC883550 21-Jan-24 Polled Purebred

CIRCLE CEE LEGEND 307A
DRD VISION 848H
 JWX ECSTATIC 848D

RGP HEAVY DUTY 33H
ANCHOR D KESSI 115K
 BOB'S BOUGIE 81G

LT LEDGER 0332 P
 CIRCLE CEE STUNNING 125Y
 ELDER'S ZEUS 22Z
 KCM ECSTATIC 312N
 TURNBULLS DUTY-FREE 358D
 RGP ROSE BUD 33B
 SOS HOOEY PLD 127D
 SOS COTTON CANDY 127C

The past couple years we have purchased a handful of heifers from the Anderson bred heifer sale. Scott has had several bred to Charolais bulls, and I must admit that we were a bit skeptical at first but after calving them I do think it's a viable option. Like any breed bull selection and where you want to use them is key. "Maestro" is a bull I feel you can use as a calving ease bull and still reap the big rewards in the end. Our goal with our Charolais division is to raise performance bulls but having said that we too still have heifers to breed, so some true heifer bulls will surface in the process. I feel "Maestro" is one.



| | |
|------------|----------|
| BW | 104 lbs |
| Sept 1 Wt. | 675 lbs |
| Adj. WW | 715 lbs |
| Dec 15 Wt. | 1090 lbs |
| Adj. YW | 1347 lbs |
| WPDA | 3.53 lbs |

116

ANCHOR D MIRAGE 113M

ZDS 113M MC883563 10-Feb-24 Polled Purebred

CIRCLE CEE LEGEND 307A
DRD VISION 848H
 JWX ECSTATIC 848D

WC MILESTONE 5223 P
BOB'S JOY RIDE 13J
 BOB'S BACK ROAD BEAUTY 97E

LT LEDGER 0332 P
 CIRCLE CEE STUNNING 125Y
 ELDER'S ZEUS 22Z
 KCM ECSTATIC 312N
 WC BENELLI 2134 P ET
 WC LADY BLUE 0506 P
 WINN MANS CHAVEZ 826Y
 ALT PATRICIA 106S

"Mirage" has been blazing a trail to the feed bunk as of late. This bull has turned on the jets. Every day I like him just that much more, and note the birth date. He looks good now but in a month and a bit come sale day he is going to be wicked good. Big quartered, long bodied, big topped, and a very laid back disposition. February 7 I think he will be very easy to spot, and coming from a really nice young cow and a great cow family. Mark him in your catalogue as a must see.



| | |
|------------|----------|
| BW | 106 lbs |
| Sept 1 Wt. | 740 lbs |
| Adj. WW | 753 lbs |
| Dec 15 Wt. | 1135 lbs |
| Adj. YW | 1355 lbs |
| WPDA | 3.65 lbs |

117 ANCHOR D MANCHESTER 46M

ZDS 46M MC883559 08-Feb-24 Polled Purebred

CIRCLE CEE LEGEND 307A
DRD VISION 848H
 JWX ECSTATIC 848D

WC MILESTONE 5223 P
BOB'S NEON LOVE 46H
 SOS SOOKIE STACKHOUSE 29B

LT LEDGER 0332 P
 CIRCLE CEE STUNNING 125Y
 ELDER'S ZEUS 22Z
 KCM ECSTATIC 312N
 WC BENELLI 2134 P ET
 WC LADY BLUE 0506 P
 HTA ICE 19X
 SDC TAYLOR 12W

The year before I made a really big mistake. The dam of "Manchester" had a little 70 lb. bull calf that looked like a toad. Come spring he still looked like a toad so I thought no point keeping him, then in the fall a prince appeared. On the bright side, he did end up going into the 4H program. So this year I watched a little closer. Now "Manchester" was a bigger calf at birth no doubt, but this guy has kind of done the same, I didn't mind him going to grass, but I loved him at weaning time and even that much more so now. So his dam moved up high on our wish list at the dispersal and we are anxious to see what she does this year. This is a very good bull, not a year old sale day, but he will be found.



| | |
|------------|----------|
| BW | 109 lbs |
| Sept 1 Wt. | 710 lbs |
| Adj. WW | 673 lbs |
| Dec 15 Wt. | 1020 lbs |
| Adj. YW | 1145 lbs |
| WPDA | 3.01 lbs |

118 ANCHOR D MAXIMUS 3M

ZDS 3M MC883534 11-Jan-24 Polled Purebred

RAINBOW MR CYRANO 32D
MX COUGARHILL HANK 720G
 MVX EDITH 806X

CIRCLE CEE LEGEND 307A
ANCHOR D JEWEL 3J
 LAE GLITTER 9133G

CYRANO
 FRIVOLE
 WILDOR RAVEN 6M
 SUNSET ACRES NOREEN 18N
 LT LEDGER 0332 P
 CIRCLE CEE STUNNING 125Y
 HIGH BLUFF DIESEL 25D
 LAE HAPPY GIRL 79X

"Maximus" is another bull who was weaned early but for different reasons. Somehow he and his mom managed to get separated on pasture and with a beaver dam, and some flooding by the time we realized they were apart it was too late, so what this bull has done he has pretty well done all on his own. We did bring him home in July and he took off from there. He comes from a "Legend" cow so a little more refined and a bit more calving ease on the bottom side of this pedigree. There is maybe more to this bull than what meets the eye.



| | |
|------------|----------|
| BW | 102 lbs |
| Sept 1 Wt. | 740 lbs |
| Adj. WW | 707 lbs |
| Dec 15 Wt. | 1080 lbs |
| Adj. YW | 1225 lbs |
| WPDA | 3.22 lbs |

119 ANCHOR D MARLOW 2M

ZDS 2M MC883544 15-Jan-24 Polled Purebred

RAINBOW MR CYRANO 32D
MX COUGARHILL HANK 720G
 MVX EDITH 806X

CIRCLE CEE LEGEND 307A
ANCHOR D JANE 2J
 LAE GENINE 9202G

CYRANO
 FRIVOLE
 WILDOR RAVEN 6M
 SUNSET ACRES NOREEN 18N
 LT LEDGER 0332 P
 CIRCLE CEE STUNNING 125Y
 ABC EL BUENO B392 POLL
 LAE NATASHA 4136B

We used "Hank" on a couple of finer made "Legend" females to add some bone and more mass to them. "Marlow" is a very smooth made bull, who certainly has a degree of calving ease on his bottom side of his pedigree, and the extra power from the top side. He is a bull I feel will be very complimentary with a set of cows you may wish to refine a bit of bone in. Please note his dam came up open so he is one of the calves that was weaned in July.



| | |
|------------|----------|
| BW | 111 lbs |
| Sept 1 Wt. | 805 lbs |
| Adj. WW | 699 lbs |
| Dec 15 Wt. | 1220 lbs |
| Adj. YW | 1331 lbs |
| WPDA | 3.52 lbs |

120 ANCHOR D BLACKJACK 166M

ZDS 166M MC883519 03-Jan-24 Polled Purebred

GERRARD PASTOR 35Z
ELDER'S BLACKJACK 788B
 SVY STARSTRUCK 8X

SPARROWS LANDMARK 963W
LAE SASSAFRASS 8166F
 LAE ROUNDUP'S SASS 560C

GERRARD PREACHER 31U
 GERRARD ROXANNE 18P
 SVY AD INVINCIBLE P 748T
 SVY STARSTRUCK 559R
 ABC NUEVO
 SPARROWS PETITE 461N
 MERIT ROUNDUP 9508W
 LAE SASSY SPUR 660S

"Blackjack" is a big time performance bull. His dam is from our original group of cows we purchased from Horse Shoe E. This is my favorite cow from this package. A big volume cow, that is very angular, huge topped and lots of hair. This bull will be a license to print money. I can only imagine just how good a pen of steer calves sired by him will be. His sire is unquestionably one of the most impressive bulls you will see. I think as this bull develops he will age like fine wine and just get better and better.



| | |
|------------|----------|
| BW | 102 lbs |
| Sept 1 Wt. | 815 lbs |
| Adj. WW | 738 lbs |
| Dec 15 Wt. | 1255 lbs |
| Adj. YW | 1408 lbs |
| WPDA | 3.6 lbs |

121 ANCHOR D MEMPHIS 142M

ZDS 142M MC883513 01-Jan-24 Polled Purebred

TURNBULLS DUTY-FREE 358D
RGF HEAVY DUTY 33H
 RGP ROSE BUD 33B

BOB'S GAMBINO 12F
BOB'S SUNRISE 42H
 SOS HANKIE PANKIE 13D

PLEASANT DAWN MVP 316Y
 CTP MISS GOOGLE 358Z
 MERIT 8789U
 RGP TAPESTRY 32T
 CML GUSTO 662D
 BWP WISH LIST 8W
 WINN MANS CHAVEZ 826Y
 ANCHOR SOS ABIGAIL 1A

"Memphis" was my personal pick of the Charolais bull calves as a baby and all summer long. He is a big soggy dude that combines power and masculinity yet still is clean enough fronted with a degree of calving ease. His full brother sold in last year's sale to Gerald Willsie, and he will be used on a powerful set of cows. We really appreciate both the dam and grand dam of "Memphis" so much so that both were purchased back for our own program in Bob's Dispersal sale. Not much guess work with this guy, as he will sire an elite set of calves.



| | |
|------------|----------|
| BW | 95 lbs |
| Sept 1 Wt. | 800 lbs |
| Adj. WW | 710 lbs |
| Dec 15 Wt. | 1165 lbs |
| Adj. YW | 1232 lbs |
| WPDA | 3.36 lbs |

122 BOB'S MERCURY 6M

BOB 6M MC879696 03-Jan-24 Polled Purebred

TURNBULLS DUTY-FREE 358D
RGF HEAVY DUTY 33H
 RGP ROSE BUD 33B

SDC BULLHORN 11B
BOB'S HALLEY'S COMET 173E
 SOS HALLEY 10X

PLEASANT DAWN MVP 316Y
 CTP MISS GOOGLE 358Z
 MERIT 8789U
 RGP TAPESTRY 32T
 KEYS ALL STATE 149X
 SDC EASY ON THE EYES 29Z
 DCD SATURNE HISMAN 1G
 SOS LADY PERFECT PLD 3M

"Mercury" is a bull I am sure you will quite appreciate. His dam was a larger framed cow, who if you studied Bob's dispersal catalogue you will see was high on fertility. A perennial early calver, and always adding something into the sale pen. I obviously didn't see these bulls develop through the summer, only when they came to our place after weaning but this is a bull I have really appreciated since he arrived and has been on feed. A very solid bull for sure.



| | |
|------------|----------|
| BW | 110 lbs |
| Sept 1 Wt. | 770 lbs |
| Adj. WW | 688 lbs |
| Dec 15 Wt. | 1180 lbs |
| Adj. YW | 1312 lbs |
| WPDA | 3.48 lbs |

123

ANCHOR D MAVERICK 13M

ZDS 13M MC883535 11-Jan-24 Polled Purebred

TURNBULLS DUTY-FREE 358D
RGP HEAVY DUTY 33H
 RGP ROSE BUD 33B

WINN MANS CHAVEZ 826Y
SOS HANKIE PANKIE 13D
 ANCHOR SOS ABIGAIL 1A

PLEASANT DAWN MVP 316Y
 CTP MISS GOOGLE 358Z
 MERIT 8789U
 RGP TAPESTRY 32T
 MERIT 7329T
 WINN MANS BREATHLESS 826U
 MERIT ROUNDUP 9508W
 ANCHOR RAINBOW 9R

A very similar story as "Memphis" and so it should be "Maverick" is a 1/2 brother to the dam of "Memphis" and both sired by "Heavy Duty". Same big thick hair coat, deep ribbed, sound footed, and broad topped. We really liked him as a calf and were sure to breed his mother back the same way again this past year. You can never have too many bulls like this in the pen. This is a Rancher Deluxe. He will be problem free, calve well, and wean off a big powerful set of calves. A front end contender.



| | |
|------------|----------|
| BW | 99 lbs |
| Sept 1 Wt. | 845 lbs |
| Adj. WW | 792 lbs |
| Dec 15 Wt. | 1180 lbs |
| Adj. YW | 1270 lbs |
| WPDA | 3.54 lbs |

124

BOB'S MUNCH 21M

BOB 21M MC879420 17-Jan-24 Polled Purebred

TURNBULLS DUTY-FREE 358D
RGP HEAVY DUTY 33H
 RGP ROSE BUD 33B

WINN MANS CHAVEZ 826Y
BOB'S LOLLIPOP 19G
 BOB'S EVA 180E

PLEASANT DAWN MVP 316Y
 CTP MISS GOOGLE 358Z
 MERIT 8789U
 RGP TAPESTRY 32T
 MERIT 7329T
 WINN MANS BREATHLESS 826U
 CML MANHATTAN 449B
 FVSF MS ICE 46B

I am a big fan of the "Heavy Duty" sire group. We were very pleased with his calves last year, and used him aggressively again this past year. Calves are a perfect size at birth, hit the ground and are up and going in no time. They have lots of eye appeal, growth and hair and are very structurally correct. The dam of "Munch" was sold in Bob's dispersal for \$10,000 to Bar M. A very well put together cow. This bull is just a really nice user friendly bull that will work on any type of cow.



| | |
|------------|----------|
| BW | 102 lbs |
| Sept 1 Wt. | 745 lbs |
| Adj. WW | 746 lbs |
| Dec 15 Wt. | 1100 lbs |
| Adj. YW | 1253 lbs |
| WPDA | 3.45 lbs |

125

BOB'S MEGA DUTY 34M

BOB 34M MC879699 31-Jan-24 Polled Purebred

TURNBULLS DUTY-FREE 358D
RGP HEAVY DUTY 33H
 RGP ROSE BUD 33B

SDC TIME OUT 88T
VFF VIKSE NELDA 188Y
 KEY M'S NELDA 32N

PLEASANT DAWN MVP 316Y
 CTP MISS GOOGLE 358Z
 MERIT 8789U
 RGP TAPESTRY 32T
 MXS VERMILLION 527R
 SVY HIP HOP 228M
 KBK LOCOMOTIVE 6L
 KEY M'S KATHLEEN 19K

I never saw the dam of "Mega Duty" as she was not included in the dispersal sale, however keep in mind she was a "Y" model cow. That tells me there is a lot of longevity in this bull. As a 13 year old cow she weaned off a smashing good bull, and this is a bull I have really appreciated since his arrival here. A well balanced bull and you already know my thoughts on his sire. I think this will be a very nice purchase. Use him to add some structure into your program.



| | |
|------------|----------|
| BW | 105 lbs |
| Sept 1 Wt. | 930 lbs |
| Adj. WW | 847 lbs |
| Dec 15 Wt. | 1080 lbs |
| Adj. YW | 1076 lbs |
| WPDA | 3.2 lbs |

126 ANCHOR D RUGERNAUGHT 89M

ZDS 89M MC883540 12-Jan-24 Polled Purebred

LT RANSOM 8644
WGD RUGER 8J
 WGD THE CRUSH 14D

SOS HOOEY PLD 127D
BOB'S SHAKIN IT 89G
 BOB'S RODEO QUEEN 131E

LT JOURNEY 5208 PLD
 LT SHEILA 337 PLD
 JIL THUNDER ROLL 69Z
 JIL LASSY 141X
 WINN MANS CHAVEZ 826Y
 FFBB ABBI 307A
 SOS CHUCK WAGON 54C
 KMAC PERFECT TEENA 6T

"Rugernaught" was a standout all summer long. No doubt if you toured our pastures he is without question one of the bulls you saw. Huge muscle shape, length of body, and this guy can really get out and travel. The pen was very healthy post weaning, but unfortunately this is one of the few bulls that had a little health struggle. We weren't sure if it was just an injury or an infection that hit him, but it set him back drastically. Having said that he has fully recovered and bounced back but when you see the spread between yearling and weaning keep that in mind. He battled all summer long for the #1 position and was the heaviest Charolais of ours at weaning. This is an excellent bull that you will appreciate, and deserves to be marked high on your list.



| | |
|------------|----------|
| BW | 103 lbs |
| Sept 1 Wt. | 780 lbs |
| Adj. WW | 677 lbs |
| Dec 15 Wt. | 1235 lbs |
| Adj. YW | 1370 lbs |
| WPDA | 3.54 lbs |

127 ANCHOR D CHUCKWAGON 362M

ZDS 362M MC883515 01-Jan-24 Polled Purebred

SILVERSTREAM GEDDES G102
SOS CHUCK WAGON 54C
 SDC BACHOLERETTE 44W

SPARROWS LANDMARK 963W
LAE ARIA 362A
 LAE WONDER WOMAN 914W

SILVERSTREAM ENTICER E30
 SILVERSTREAM DOLLY V5
 SPARROWS SANCHEZ 715T
 SOS BACHOLERETTE 41N
 ABC NUEVO
 SPARROWS PETITE 461N
 LAE SANTANA 635S
 LAE STARDOM 691S

I have always had a huge appreciation for the "Chuckwagon" cattle. We had 4 of his daughters in our herd, and had intentions of adding all 4 back into our program, but came up just short on one of them. They are phenomenal cows that are big broody and powerful. We have two sons in the sale this year and they are no doubt power bulls. Note the rate of gain on this guy 4.33 on feed. We try not to push these bulls and gently develop them so they will last a long time. You have to appreciate the growth on a bull like this on the ration they are on. Man oh man the steers he will sire are going to be epic!



| | |
|------------|----------|
| BW | 108 lbs |
| Sept 1 Wt. | 775 lbs |
| Adj. WW | 694 lbs |
| Dec 15 Wt. | 1080 lbs |
| Adj. YW | 1158 lbs |
| WPDA | 3.2 lbs |

128 ANCHOR D BAND WAGON 147M

ZDS 147M MC883539 12-Jan-24 Polled Purebred

SILVERSTREAM GEDDES G102
SOS CHUCK WAGON 54C
 SDC BACHOLERETTE 44W

ABC BERNARDO TORO B180
LAE DELIGHT 6147D
 LAE STARRY SKY 124Y

SILVERSTREAM ENTICER E30
 SILVERSTREAM DOLLY V5
 SPARROWS SANCHEZ 715T
 SOS BACHOLERETTE 41N
 ABC ZACARIAS Z104
 ABC NIKETORA BERNADA
 MXS TA DAH 974W
 LAE STARDOM 691S

"Band wagon" is another bull that will produce a great set of steer calves. He comes from an extremely solid cow, with huge feet and lots of depth of heel. This is a cow that whatever breed you have to appreciate the structural integrity of, as cows like this will last forever, just a great brood cow. As I mentioned before the sire "Chuckwagon" is a bull that will add body mass, broad top and dimension. I think this bull will be a great buy and pay for himself in no time flat.



| | |
|------------|----------|
| BW | 95 lbs |
| Sept 1 Wt. | 720 lbs |
| Adj. WW | 655 lbs |
| Dec 15 Wt. | 1160 lbs |
| Adj. YW | 1325 lbs |
| WPDA | 3.47 lbs |

129

ANCHOR D MILO 135M

ZDS 135M MC883545 16-Jan-24 **Homozygous Polled Purebred**

SCX JEHU 233E
TRI-N GO NORTH 2411H
TRI-N MALIBU 72B

SOS CHUCK WAGON 54C
BOB'S DAISEY DUKE 135E
SOS ANGEL 266A

SCR TRIUMPH 2135
SCX MISS MAGNUM 109X
MVY XPLOER 21X
TRI-N MALIBU PLD ET 52Y
SILVERSTREAM GEDDES G102
SDC BACHOLERETTE 44W
TRI-N PREFIX PLD ET 54Y
SOS PRINCESS HANNIS 188R

"Milo" is a bull that has really been coming on strong. His full brother was our high seller two years ago selling to Soderglen Ranches. I thought he was a nice bull to tie in right behind the "Chuckwagon" bulls, as he is the sire of "Milo's" dam. This is a powerful cow that we added back into our program, and her daughter (who happened to be our very first Charolais female) was entered into our donor program this year. This is a bull with huge potential, and another bull gaining in excess of 4 lbs./day from weaning.



| | |
|------------|----------|
| BW | 96 lbs |
| Sept 1 Wt. | 740 lbs |
| Adj. WW | 723 lbs |
| Dec 15 Wt. | 1100 lbs |
| Adj. YW | 1237 lbs |
| WPDA | 3.37 lbs |

130

BOB'S MORREL 28M

BOB 28M MC879425 24-Jan-24 **Polled Purebred**

SCX JEHU 233E
TRI-N GO NORTH 2411H
TRI-N MALIBU 72B

SOS POLLED DETONATOR 8M
SOS SITTIN PRETTY 3C
ANCHOR SOS ANNETTE 15A

SCR TRIUMPH 2135
SCX MISS MAGNUM 109X
MVY XPLOER 21X
TRI-N MALIBU PLD ET 52Y
LHD MR PERFECT Y416
P-3 LADY MONTE 0-80Z
CMF 192 WRANGLER 256
ANCHOR LAURIE 14L

The dam of "Morrel" was an older very solid cow that sold in Bob's dispersal, she also had a couple daughters in the sale, one of which we calved the past couple of years. A very heavy milking female who was one of those very attractive females you always noticed. The sire of "Morrel", "Go North" is a bull that will no doubt add power. He has sired our lead off bull in our sale the past two years, and has a powerful group again this year.



| | |
|------------|----------|
| BW | 94 lbs |
| Sept 1 Wt. | 775 lbs |
| Adj. WW | 756 lbs |
| Dec 15 Wt. | 1080 lbs |
| Adj. YW | 1191 lbs |
| WPDA | 3.34 lbs |

131

BOB'S MONEY LINK 30M

BOB 30M MC879564 27-Jan-24 **Polled Purebred**

SCX JEHU 233E
TRI-N GO NORTH 2411H
TRI-N MALIBU 72B

SOS GAUCHO 139D
BOB'S GEEZ GOLLY 64G
SOS ALBERTA MADE 51D

SCR TRIUMPH 2135
SCX MISS MAGNUM 109X
MVY XPLOER 21X
TRI-N MALIBU PLD ET 52Y
WINN MANS CHAVEZ 826Y
ANCHOR ZENA 24Z
GERRARD PASTOR 35Z
ANCHOR ZOLA 22Z

"Money Link" is a long bodied very smooth made bull. His dam is another cow which we calved in our program. A very smooth attractive made female with a picture perfect udder, and a really sound set of feet. This will be a bull that will be very athletic, and really get out and travel. Anyone with some larger pastures with extra ground this is a nice choice of bull. Very tight sheathed, smooth made, with a very smooth shoulder set, a real nice rancher's choice bull.



| | |
|------------|----------|
| BW | 107 lbs |
| Sept 1 Wt. | 870 lbs |
| Adj. WW | 859 lbs |
| Dec 15 Wt. | 1315 lbs |
| Adj. YW | 1495 lbs |
| WPDA | 4.11 lbs |

132 BOB'S MEAT MACHINE 33M

BOB 33M MC879567 30-Jan-24 Polled Purebred

SCX JEHU 233E
TRI-N GO NORTH 2411H
 TRI-N MALIBU 72B

SPARROWS KINGSTON 139Y
BOB'S CHIC 10G
 BOB'S MILK SHAKE 101E

SCR TRIUMPH 2135
 SCX MISS MAGNUM 109X
 MZY XPLOER 21X
 TRI-N MALIBU PLD ET 52Y
 WINN MANS LANZA 610S
 SPARROWS DELIGHT 374P
 SOS HOME GROWN 15C
 SDC BLISSFULLY ME 54B

You want performance, here it is. "Meat Machine" appropriately named is just that. This big monster is as good as they come. His dam was the high selling cow in Bob's dispersal selling to Dog Patch Acres. No doubt they will be pleased with her. This bull is as good as it gets. Look at his WPDA of 4.11. If you want to add pounds to a calf crop, then look no further, he is the real deal. He's not just big though, this bull is super correct, moves extremely fluently and is a gentleman to be around. Herd bull time.



| | |
|------------|----------|
| BW | 102 lbs |
| Sept 1 Wt. | 920 lbs |
| Adj. WW | 920 lbs |
| Dec 15 Wt. | 1290 lbs |
| Adj. YW | 1448 lbs |
| WPDA | 4.02 lbs |

133 BOB'S MEATLOAF 31M

BOB 31M MC879698 29-Jan-24 Polled Purebred

TURNBULLS DUTY-FREE 358D
SOS MR WHITE 46K
 ANCHOR IAINS WRILEY 20W

HTA DEFENDER 846F
BOB'S BUTTER TART 36H
 BOB'S BUCKLE BUNNY 78E

PLEASANT DAWN MVP 316Y
 CTP MISS GOOGLE 358Z
 CMF 192 WRANGLER 256
 ANCHOR RAINBOW 9R
 RGP REMINGTON 101Y
 HTA HOT STUFF 349A
 SOS HOME GROWN 15C
 ALT AUTUMN 108S

This is Bob's other heavy weight in the pen. "Meatloaf" was his heaviest weaning bull, and is the lone bull calf sired by "Mr. White". He is a bull with an excellent pedigree, and saw limited use last year for Bob. Interestingly his heaviest bull and heaviest heifer at weaning were sired by this bull. We had his grand dam and a full sister to his dam in our program, both of which have solid bulls in this year's sale. This is a very productive cow family. Perhaps a bull you want to pay attention to sale day, he could be a diamond in the rough.



| | |
|------------|----------|
| BW | 94 lbs |
| Sept 1 Wt. | 695 lbs |
| Adj. WW | 756 lbs |
| Dec 15 Wt. | 1055 lbs |
| Adj. YW | |
| WPDA | 3.54 lbs |

134 BOB'S MEGA FORCE 53M

BOB 53M MC879687 21-Feb-24 Polled Purebred

HIGH BLUFF BODACIOUS 78B
HVA FORCE 77F
 HVA NADINE 77A

SDC BULLHORN 11B
BOB'S COME ON EILEEN 127E
 ANCHOR WHISPER 24W

SHSH HD 14Y
 HARVIE MS GELLIA 12W
 CSS SIR JR NAVIGATOR 44Y
 HVA WHISTLE 777W
 KEYS ALL STATE 149X
 SDC EASY ON THE EYES 29Z
 LT BLUEGRASS 4017 P
 ANCHOR PHOEBE 21P

"Mega Force" is the only "Force" son in this year's sale. He is a bull that was used as a calving ease sire, and produced some outstanding females with loads of milk. The dam of "Mega Force" was a long smooth made buckskin cow, with a picture perfect udder. This is a bull that can be used to reduce some birth weight, add some length, and know the buckskin color is just one generation away, he should leave you some tan calves. He is one of the youngest in the sale, and because of his age has no adjusted yearling weight, but look at his WPDA, a bull with some performance as well.



| | |
|------------|----------|
| BW | 81 lbs |
| Sept 1 Wt. | 740 lbs |
| Adj. WW | 723 lbs |
| Dec 15 Wt. | 1045 lbs |
| Adj. YW | 1187 lbs |
| WPDA | 3.04 lbs |

135

ANCHOR D MAJESTY 10M

ZDS 10M MC883527 06-Jan-24 Polled Purebred

TR CAG CARBON COPY 7630E ET
ELDER'S JAKE 194J
 ELDER'S DALYCE RAYEL 80C

DRD VISION 848H
ANCHOR D KELLY 10K
 BOB'S ONE MARGARITA 27H

RBM TR RHINESTONE Z38
 M&M MS CARBINE 1567 PLD
 GRANT'S PLAYBOY 3X
 ELDER'S DALYCE RAY 50Y
 CIRCLE CEE LEGEND 307A
 JWX ECSTATIC 848D
 HVA FORCE 77F
 SOS SITTIN PRETTY 3C

"Majesty" is a bull I quite like. We used "Jake" in our own program as a calving ease bull where he did an outstanding job for us. "Majesty" is from a first calving "Vision" daughter who is from a "Force" daughter, so he does have a triple shot of calving ease stacked up in his pedigree, but certainly has more than enough performance to back him up. This is a bull I would feel very confident in throwing in the pen as a calving ease sire. Further to that though, this bull has a look. When he's out grown his use in that pen put him with the cows, you won't be disappointed.



| | |
|------------|----------|
| BW | 97 lbs |
| Sept 1 Wt. | 720 lbs |
| Adj. WW | 708 lbs |
| Dec 15 Wt. | 1145 lbs |
| Adj. YW | 1356 lbs |
| WPDA | 3.33 lbs |

136

ANCHOR D MONTGOMERY 154M

ZDS 154M MC883528 06-Jan-24 Polled Purebred

TR CAG CARBON COPY 7630E ET
ELDER'S JAKE 194J
 ELDER'S DALYCE RAYEL 80C

TRI-N GO NORTH 2411H
BOB'S RODEO QUEEN 54K
 BOB'S BUCKLE BUNNY 78E

RBM TR RHINESTONE Z38
 M&M MS CARBINE 1567 PLD
 GRANT'S PLAYBOY 3X
 ELDER'S DALYCE RAY 50Y
 SCX JEHU 233E
 TRI-N MALIBU 72B
 SOS HOME GROWN 15C
 ALT AUTUMN 108S

This is one cool dude. "Montgomery" does come from a first calving heifer, but she is a high power performance individual, which you can see looking at this bull's performance. She was a female we were super happy to have added back into our herd from Bob's dispersal. As you study through you will see she has a maternal sister, who raised Bob's heaviest weaning bull. Her mother also has a really solid bull in the sale. This is a cow family that can get'er done. "Montgomery" is another bull who surpassed the 4 lb./ day mark on feed. Just a very very solid bull.



| | |
|------------|----------|
| BW | 108 lbs |
| Sept 1 Wt. | 695 lbs |
| Adj. WW | 653 lbs |
| Dec 15 Wt. | 1100 lbs |
| Adj. YW | 1271 lbs |
| WPDA | 3.37 lbs |

137

ANCHOR D MORRIE 75M

ZDS 75M MC883552 24-Jan-24 Polled Purebred

TR CAG CARBON COPY 7630E ET
ELDER'S JAKE 194J
 ELDER'S DALYCE RAYEL 80C

SILVERSTREAM GEDDES G102
SOS GIGI 75C
 FFBB MOMMAGIRL PLD 930W

RBM TR RHINESTONE Z38
 M&M MS CARBINE 1567 PLD
 GRANT'S PLAYBOY 3X
 ELDER'S DALYCE RAY 50Y
 SILVERSTREAM ENTICER E30
 SILVERSTREAM DOLLY V5
 WHITECAP DOMINATION 63T
 FFBB MOMMAGIRL PLD 679S

This is going to be one big powerful bull. His brother in last year's sale was the heavy weight bull, selling to D Over R Cattle. I think this will be a very good cross of "Jake" on this cow bringing out the best traits in both. "Morrie" has really started to develop quite nice as of late. He is very attractive, has a big hip and huge capacity as well. He gets out and really travels well, and I feel this will be an absolute power house that everyone will truly appreciate that much more as a mature bull. His dam was a big framed cow who did a great job for us in her time. Don't overlook this bull he will be very good.



| | |
|------------|----------|
| BW | 83 lbs |
| Sept 1 Wt. | 735 lbs |
| Adj. WW | 723 lbs |
| Dec 15 Wt. | 1160 lbs |
| Adj. YW | 1329 lbs |
| WPDA | 3.32 lbs |

138

BOB'S JACKPOT 2M

BOB 2M MC879405 01-Jan-24 Polled Purebred

TR CAG CARBON COPY 7630E ET
ELDER'S JAKE 194J
 ELDER'S DALYCE RAYEL 80C

HTA DEFENDER 846F
BOB'S LILIBET 22K
 BOB'S MILK SHAKE 101E

RBM TR RHINestone Z38
 M&M MS CARBINE 1567 PLD
 GRANT'S PLAYBOY 3X
 ELDER'S DALYCE RAY 50Y
 RGP REMINGTON 101Y
 HTA HOT STUFF 349A
 SOS HOME GROWN 15C
 SDC BLISSFULLY ME 54B

"Jackpot" is a very deep soggy loose made bull. His dam is a very sweet young cow, coming from the "Milk Shake" cow family. This is the same cow family responsible for Bob's top performance bull. His dam is a female we really admired, and have watched what this cow family has done, so we were fortunate enough to add her into our program. A very solid made bull with a very modest birth weight. He will put you in the winner's circle where you very well could hit the "Jackpot".



| | |
|------------|----------|
| BW | 89 lbs |
| Sept 1 Wt. | 690 lbs |
| Adj. WW | 686 lbs |
| Dec 15 Wt. | 1085 lbs |
| Adj. YW | 1250 lbs |
| WPDA | 3.11 lbs |

139

BOB'S MICKEY 5M

BOB 5M MC879408 01-Jan-24 Polled Purebred

TR CAG CARBON COPY 7630E ET
ELDER'S JAKE 194J
 ELDER'S DALYCE RAYEL 80C

TRI-N GO NORTH 2411H
BOB'S AURORA BOREALIS 29K
 SOS SOOKIE STACKHOUSE 29B

RBM TR RHINestone Z38
 M&M MS CARBINE 1567 PLD
 GRANT'S PLAYBOY 3X
 ELDER'S DALYCE RAY 50Y
 SCX JEHU 233E
 TRI-N MALIBU 72B
 HTA ICE 19X
 SDC TAYLOR 12W

Another bull coming from a very powerful cow family. The grand dam of "Mickey" was a tremendous producer, and you will find another of my personal favorite bulls from this cow family in lot #117. We are very pleased with the job "Jake" has done. He did a great job calving for us, and his daughters look like they will be very good producers with beautiful udder attachment. "Mickey" is a bull that will also boast a little extra power through the bottom side of his pedigree through "Go North". Power and calving ease all wrapped up in this tidy package.



| | |
|------------|----------|
| BW | 84 lbs |
| Sept 1 Wt. | 730 lbs |
| Adj. WW | 757 lbs |
| Dec 15 Wt. | 1135 lbs |
| Adj. YW | 1336 lbs |
| WPDA | 3.4 lbs |

140

BOB'S MARVEL 20M

BOB 20M MC879419 16-Jan-24 Polled Purebred

TR CAG CARBON COPY 7630E ET
ELDER'S JAKE 194J
 ELDER'S DALYCE RAYEL 80C

HTA DEFENDER 846F
BOB'S IT GIRL 41K
 BOB'S ESSENCE 171E

RBM TR RHINestone Z38
 M&M MS CARBINE 1567 PLD
 GRANT'S PLAYBOY 3X
 ELDER'S DALYCE RAY 50Y
 RGP REMINGTON 101Y
 HTA HOT STUFF 349A
 SDC BULLHORN 11B
 SOS NATASHIA 32B

For what it's worth the dam of "Marvel" was a cow that was high on our wish list that we ended up being the runner up bidder on, as simply we couldn't own them all. This is a beautiful young cow that did a masterful job as a first calver. We did have a full sister a year older, who unfortunately came up open, so we had a pretty good idea how productive this young cow will be. Once again a very nice birth weight from "Jake" and a first calving female. This is another bull with built in calving ease and performance all in one package.



| | |
|------------|----------|
| BW | 97 lbs |
| Sept 1 Wt. | 835 lbs |
| Adj. WW | 825 lbs |
| Dec 15 Wt. | 1160 lbs |
| Adj. YW | 1289 lbs |
| WPDA | 3.63 lbs |

141

BOB'S MACHINE 32M

BOB 32M MC879566 30-Jan-24 Polled Purebred

TR CAG CARBON COPY 7630E ET
ELDER'S JAKE 194J
 ELDER'S DALYCE RAYEL 80C

GERRARD PASTOR 35Z
SOS FOXIE 35D
 ANCHOR XERA 3X

RBM TR RHINestone Z38
 M&M MS CARBINE 1567 PLD
 GRANT'S PLAYBOY 3X
 ELDER'S DALYCE RAY 50Y
 GERRARD PREACHER 31U
 GERRARD ROXANNE 18P
 CMF 192 WRANGLER 256
 ANCHOR TAMARA 4T

One thing we have found over the past few years is you can never go wrong with a "Pastor" cow. These are big volume highly productive females that just seem to work with whatever you cross them with. The dam of "Machine" is an absolute tank of a cow. This is a bull that will develop into a massive meat machine for sure. We owned "Jake" in partnership with Bob & Jay Dawn Farms, and unfortunately he had to be shipped this fall, so his offspring in the future will be limited as we only have a small reserve of semen on him. This is a very nice bull that offers a lot of options.



| | |
|------------|----------|
| BW | 104 lbs |
| Sept 1 Wt. | 755 lbs |
| Adj. WW | 774 lbs |
| Dec 15 Wt. | 1105 lbs |
| Adj. YW | 1275 lbs |
| WPDA | 3.55 lbs |

142

BOB'S MONTE CARLO 38M

BOB 38M MC879592 08-Feb-24 Polled Purebred

TR CAG CARBON COPY 7630E ET
ELDER'S JAKE 194J
 ELDER'S DALYCE RAYEL 80C

SOS CHUCK WAGON 54C
BOB'S BARREL RACER 145E
 SOS ARIANA GRANDE 13B

RBM TR RHINestone Z38
 M&M MS CARBINE 1567 PLD
 GRANT'S PLAYBOY 3X
 ELDER'S DALYCE RAY 50Y
 SILVERSTREAM GEDDES G102
 SDC BACHOLERETTE 44W
 SOS POLLED DETONATOR 8M
 VFF VIKSE VICTORIA 144Z

"Monte Carlo" is a bull who really looks just like I would suspect looking at his pedigree. He is a thick made, moderate framed individual with lots of muscle expression, huge top, with a big solid foot, very true to his type. I think this bull will stamp all his calves the same, they will be just like rain drops. I mentioned earlier how much we like our "Chuckwagon" cows, and even though this cow wasn't at our place I suspect she was pretty well identical to her paternal sisters. A very versatile bull that will work on a large variety of cows.



| | |
|------------|----------|
| BW | 80 lbs |
| Sept 1 Wt. | 660 lbs |
| Adj. WW | 677 lbs |
| Dec 15 Wt. | 975 lbs |
| Adj. YW | 1126 lbs |
| WPDA | 3.14 lbs |

143

BOB'S MORPHEUS 39M

BOB 39M MC879602 08-Feb-24 Polled Purebred

TR CAG CARBON COPY 7630E ET
ELDER'S JAKE 194J
 ELDER'S DALYCE RAYEL 80C

CIRCLE CEE LEGEND 307A
BOB'S PRETTY LITTLE THING 40G
 BOB'S SANTA CLARITA 109E

RBM TR RHINestone Z38
 M&M MS CARBINE 1567 PLD
 GRANT'S PLAYBOY 3X
 ELDER'S DALYCE RAY 50Y
 LT LEDGER 0332 P
 CIRCLE CEE STUNNING 125Y
 SOS HARVESTER PLD 61C
 ANCHOR ZOLA 22Z

"Morpheus" should very much be a calving ease bull. A "Jake" son of of a "Legend" cow, is going to be as close to bomb proof as it gets. He is backed by a very good cow family. We had his grandmother here the past few years and she was a splendid cow. The only reason she didn't stay from the dispersal is she was just bred a little later for our program, but I guarantee her new owners are going to love her. This will be a bull that may tend to get over looked a little sale day as he isn't the biggest most powerful bull in the pen. Guess what, he's not bred to be. Appreciate him for how he is designed and what his purpose is and you will love him.



| | |
|------------|----------|
| BW | 109 lbs |
| Sept 1 Wt. | 760 lbs |
| Adj. WW | 786 lbs |
| Dec 15 Wt. | 1125 lbs |
| Adj. YW | 1307 lbs |
| WPDA | 3.64 lbs |

144

BOB'S MILLER TIME 40M

BOB 40M MC879603 10-Feb-24 Polled Purebred

TR CAG CARBON COPY 7630E ET
ELDER'S JAKE 194J
 ELDER'S DALYCE RAYEL 80C

SOS HARVESTER PLD 61C
BOB'S HAVANA 60E
 SOS PEACHES 42B

RBM TR RHINESTONE Z38
 M&M MS CARBINE 1567 PLD
 GRANT'S PLAYBOY 3X
 ELDER'S DALYCE RAY 50Y
 CSS SIR NAVIGATOR 20Y
 SOS PRINCESS KATE 33Y
 GERRARD PASTOR 35Z
 ALT SPUR ZOE 255W

Another big time performance bull. His dam's pedigree is pure power with "Harvester & Pastor", and a very star studded cow family throughout. This is a bull who should add extra pounds in the fall, as well as add some frame size in the process. He is another bull that we have really enjoyed watching develop since he arrived here after weaning. "Miller Time" will deliver the goods, allowing you to sit back and enjoy the good times.



| | |
|------------|----------|
| BW | 98 lbs |
| Sept 1 Wt. | 755 lbs |
| Adj. WW | 801 lbs |
| Dec 15 Wt. | 1190 lbs |
| Adj. YW | 1422 lbs |
| WPDA | 3.86 lbs |

145

BOB'S MASTERCLASS 42M

BOB 42M MC879605 11-Feb-24 Polled Purebred

TR CAG CARBON COPY 7630E ET
ELDER'S JAKE 194J
 ELDER'S DALYCE RAYEL 80C

BOB'S EARNED IT 86E
BOB'S WATERMELON SUGAR 65H
 BOB'S BOOTY SHAKER 128E

RBM TR RHINESTONE Z38
 M&M MS CARBINE 1567 PLD
 GRANT'S PLAYBOY 3X
 ELDER'S DALYCE RAY 50Y
 SOS HOME GROWN 15C
 ALT KELLY 6X
 CSS SIR NAVIGATOR 20Y
 ALT AUTUMN 108A

The dam of "Masterclass" very well could have been the buy of the dispersal sale. He comes from a very honest young cow, and look at the performance on this bull. He is chalked full of muscle, very eye appealing, lots of hair and just simply a bull that will do an outstanding job. This is a bull not to be over looked as he is very balanced phenotypically as well as genetically. Find him sale day, pretty certain you will like him.



| | |
|------------|----------|
| BW | 100 lbs |
| Sept 1 Wt. | 640 lbs |
| Adj. WW | 682 lbs |
| Dec 15 Wt. | 1035 lbs |
| Adj. YW | 1247 lbs |
| WPDA | 3.4 lbs |

146

BOB'S MAHOGANY RED 44M

BOB 44M MC879691 15-Feb-24 Polled Purebred

TR CAG CARBON COPY 7630E ET
ELDER'S JAKE 194J
 ELDER'S DALYCE RAYEL 80C

VFF TIME OUT 172Y
SOS MILEY 97A
 ALT ONAY 69R

RBM TR RHINESTONE Z38
 M&M MS CARBINE 1567 PLD
 GRANT'S PLAYBOY 3X
 ELDER'S DALYCE RAY 50Y
 SDC TIME OUT 88T
 KMAC PERFECT TEENA 6T
 SDC PROGRESS 16M
 ALT BARBWIRE 69L

As his name would indicate, "Mahogany Red" does have a tinge of color to him. This buff colored bull is very long and smooth made. His dam is a larger framed cow, and his 100lb birth weight is really quite modest for a power cow of her size. This is a very smooth made bull who should calve exceptionally well, add some pounds, some extra length, and maybe a hint of color in the process. Use him on any type of cow he will hit the target.



| | |
|------------|----------|
| BW | 80 lbs |
| Sept 1 Wt. | 695 lbs |
| Adj. WW | 762 lbs |
| Dec 15 Wt. | 1050 lbs |
| Adj. YW | 1270 lbs |
| WPDA | 3.49 lbs |

147

BOB'S ORIGINAL 47M

BOB 47M MC879622 18-Feb-24 Polled Purebred

TR CAG CARBON COPY 7630E ET
ELDER'S JAKE 194J
 ELDER'S DALYCE RAYEL 80C

BOB'S GAMBINO 12F
BOB'S HEART OF GLASS 56H
 SOS FOXIE 35D

RBM TR RHINESTONE Z38
 M&M MS CARBINE 1567 PLD
 GRANT'S PLAYBOY 3X
 ELDER'S DALYCE RAY 50Y
 CML GUSTO 662D
 BWP WISH LIST 8W
 GERRARD PASTOR 35Z
 ANCHOR XERA 3X

"Original" is a very moderate birth weight bull from a nice young cow. Her dam was maybe one of the largest volume cows in Bob's dispersal sale, and being a "Pastor" daughter had no lack of power. This is a well-blended pedigree that will result in the perfect mix of power and calving ease. A bull you can throw in with a set of young females, he will calve very well on them add pounds and help develop them into being future matrons of the herd. A bull that won't break your budget and be worth every dime you spend on him.



| | |
|------------|----------|
| BW | 106 lbs |
| Sept 1 Wt. | 680 lbs |
| Adj. WW | 766 lbs |
| Dec 15 Wt. | 1095 lbs |
| Adj. YW | |
| WPDA | 3.78 lbs |

148

BOB'S MYSTIC DAN 54M

BOB 54M MC879627 29-Feb-24 Polled Purebred

TR CAG CARBON COPY 7630E ET
ELDER'S JAKE 194J
 ELDER'S DALYCE RAYEL 80C

GERRARD PASTOR 35Z
SOS MISS SYLVANIA 101D
 FFBB MISS SILVA PLD 730T

RBM TR RHINESTONE Z38
 M&M MS CARBINE 1567 PLD
 GRANT'S PLAYBOY 3X
 ELDER'S DALYCE RAY 50Y
 GERRARD PREACHER 31U
 GERRARD ROXANNE 18P
 HTA ULTIMATE 448P
 FFBB MISS SILVA PLD 459P

With a name like this I'm very certain this bull will be incredibly good "Mystic Dan" (I didn't name him) is a very smooth put together individual. His dam was purchased in the dispersal by Sun Rise Charolais in Ontario. We happened to buy her full sister who just so happens to be the dam of our lead off Charolais bull in last year's sale "Hocus Pocus". We were fortunate enough to use him when we were short a bull ourselves this spring thanks to his new owners Rob & Becky Sweet. I think that endorses our thoughts on him. "Mystic Dan" is backed by a stellar cow family, and has loads of potential. You can't go wrong here.



| | |
|------------|----------|
| BW | 102 lbs |
| Sept 1 Wt. | 552 lbs |
| Adj. WW | 612 lbs |
| Dec 15 Wt. | 880 lbs |
| Adj. YW | |
| WPDA | 3.02 lbs |

149

ANCHOR D WAYLON 194L

ZDS 194L MC868337 03-Mar-23 Polled Purebred

C2 PHAROAH 79F
C2 MERLE HAGGARD 1H
 TURNBULL, A&S MISS SHERRY 906F

SDC TIME OUT 88T
VFF RUBY MAE 194Y
 SOS RUBY MAE 172P

C2 CARLOS 33C
 ZWB BRIDGET 69D
 CEDARLEA LINCOLN 28D
 TURNBULLS DATE 713D
 MXS VERMILLION 527R
 SVY HIP HOP 228M
 HTA CROWN PRINCE 152L
 SOS LADY TURBO PLD 73L

The decision was made to hold "Waylon" over last year for a spare due to his young age. This virgin 2 year old just ran out on grass with the herd bulls all summer and then just came in December to get fed away from them. He comes from an older cow as this was her 2nd last calf, and she was maybe a little played out when he came along so I do think there is probably more performance there that what it says on paper. He was actually weaned off a full week before his weaning weight was taken too, so the 200 day weights are a bit distorted. This is a larger framed bull that will no doubt cover a bigger group of cows, and he moves extremely free and agile. A bull that can do a much bigger job and look good doing it.

ANCHOR D RANCH Simmentals

Boehringer Ingelheim and Anchor D Ranch
provide Triple Assured Health Protection
with Express Verified® PLUS.

EACH ANIMAL COMES WITH THREE DIFFERENT LEVELS OF PROTECTION:

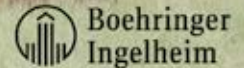
- 1. Express Verified® BVD Persistent Infection-Free Guarantee*** providing BVD PI free assurance that's transferrable through the CCIA.
- 2. A 6-month health warranty on your Anchor D bull.*** If your Express Verified® PLUS Anchor D bull gets sick with any of the 5 diseases (BVD I, BVD II, IBR, BRSV or PI3) covered in the Express® 5 vaccine up to 6 months after the Anchor D sale, **Boehringer Ingelheim will cover the cost of diagnostic testing and treatment, up to a maximum of \$3,500.**
- 3. Finally, all Anchor D's sale bulls are vaccinated to protect their testicles from infection with BVD virus.****

Express® Yearling and Express® Feedlot are ineligible for the Express Verified® Guarantee.

*See full term and conditions of guarantee.

**Givens MD, et al. 2009. Safety and efficacy of vaccination of seronegative bulls with modified-live, cytopathic bovine viral diarrhoea viruses. *Theriogenology*. 2009 Apr 1; 71(6):975-83.

Express® is a registered trademark of *Boehringer Ingelheim Vetmedica GmbH*, used under license and Express Verified® is a registered trademark of *Boehringer Ingelheim GmbH*, used under license. ©2021 *Boehringer Ingelheim Animal Health Canada Inc.* All Rights Reserved.



After years of comprehensive vaccination **Boehringer Ingelheim** is proud to partner with **Anchor D Ranch** and designate them as an



FOR MORE INFORMATION ON THE EXPRESS VERIFIED® PROGRAM, CONTACT YOUR BOEHRINGER INGELHEIM SALES REPRESENTATIVE:

| | | |
|-----------------------------------|------------------------------------|------------------------------------|
| Chad VanderMeer (780) 399-4809 | Kelsey Gore (403) 996-1813 | Michael Hargrave (519) 200-3513 |
| Kate Fullerton (403) 613-3037 | Steve Cuddington (306) 537-0417 | Mike Toner (613) 290-2057 |
| Curtis Delver (403) 382-1135 | Scott Atkins (204) 750-2548 | |

For information on Anchor D Ranch Bulls contact:
Dan or Karen Skeels at (403) 843-4756 or (403) 783 1217



www.verifiedbeef.ca

Anchor D Simmentals Ltd. is certified to meet the Canadian Roundtable for Sustainable Beef (CRSB)'s Sustainable Beef Production Standard.



www.crsbcertified.ca

TERMS AND CONDITIONS

Terms: The terms of the sale are cash or cheque payable in Canadian Funds at par immediately following the sale. The right of ownership shall not pass until after settlement is made. All settlements must be made before any livestock will be released.

Delivery Options:

- A Delivery will be made to purchasers in central regions in Western Canada, at the convenience of Anchor D Ranch, and buyer's risk. Any bulls going to Eastern Canada or other areas Anchor D Ranch will arrange for trucking at cost.
- B Bulls can be left free of charge until April 1, 2025, after April 1 a fee of \$4.00/ day will be charged per head. Cattle are then asked to be picked up by the purchaser, and Anchor D Ranch asks that all bulls left, to be insured.
- C \$100.00 Discount on any bull picked up sale day.

Certificate of Registry: After settlement has been made the buyer will be provided with the proper registration papers, duly transferred on the record of the Canadian Simmental Association. Further transfer to the herd books of other countries shall be at the buyers expense.

Fleckvieh Status: Full Fleckvieh Fullblood will have a minimum of 5 generations in their pedigree all back to Germany or Austria. It is recommended if further research is required to check with the Canadian Simmental Association, and no assumption of Fleckvieh heritage will be guaranteed by neither consignor or the CSA

Breeders Guarantee: Standard terms set forth by the Canadian Simmental

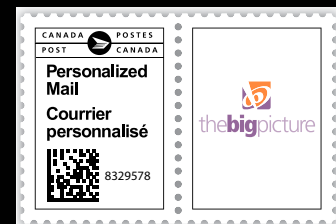
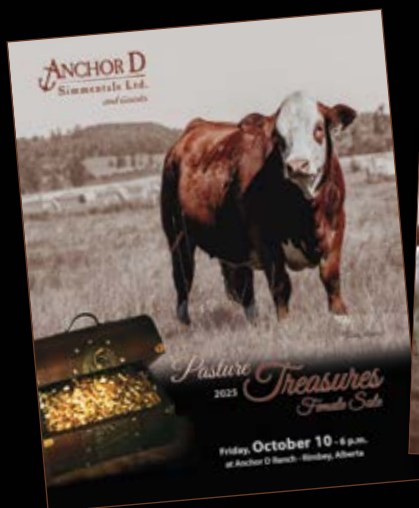
Association, with the exception where any animal is subject to any hormonal or surgical reproduction techniques after the sale, the guarantee shall be null and void.

Accidents: Although every precaution will be taken to protect the safety and comfort of buyers, neither the sales staff, auctioneer or Anchor D Ranch or consignors assumes any responsibility in the matter and disclaims any liability, legal or otherwise in the event of accident or loss or property.

Fertility & Health: All bulls have been under a full herd health program, under the guidance of Gull Lake Veterinary Services. All bulls will be fertility tested prior to the sale. Should you have any questions please give us a call.

Anchor D Ranch Simmentals

Box 1638
Rimbey, AB T0C 2J0



Genetic edge bull sale

A Special Thanks from Anchor D Ranch to all Buyers in 2024

4D Simmentals, SK
6U Cattle Company, AB
7F Ranch, BC
Andy Mueller, AB
Apple Cross Cattle, AB
Ashenbrook Simmentals, ON
Beaulac Simmentals, SK
Ben Estes, TX
Ben Herman, AB
Bill Orlick Farms, AB
Blue Zone Livestock, MB
Bovey Family Farm, ON
Canadian Donors, AB
Castor Farming, AB
CCRS Fleckvieh, SD
Chamberlain Farms, AB
Charlene Trefenanko, AB
Chris & Hannah Bowman, AB
Chris Feraro, ON
Chris Roppel, SK
Clayton Kentz, SK
Colton Stewart, AB
Corey Rudnik, AB
Cory Mack, ND
Cow Boss Simmentals, AB
Crocus Coulee Cattle Co., AB
Croft Creek Ranch, BC
Crooked Creek Cattle Co, AB
D Over R Cattle, AB
Dave Shand, AB
Delany Cattle Co, AUS
Dennis & Cherry Fleming, AB
Dennis Herman, AB
Diamond B Simmentals, AB
Diamond Rio Ranch, AB
Dobbie Simmentals, ON
Double Bar D Farms, SK
Double J Cattle, AB
Double M Land & Cattle, SK
Double RN Ranch, SK
Double S Land & Cattle, AB
Doug Johnson, AB
Down Hill Simmentals, MB
Dustin Sand, AB
Dwayne Patterson, AB
Elliott Simmentals, AB
Elm Tree Farms, ON
Erskine Colony, AB
Estes Ranches, TX
Evening Star Simmentals, AB
F5 Livestock, AB
Ferrybank Farming, AB
Five Star Cattle Ranch, AB
Flatlands Cattle, MB
Frontier Cattle Co, AB
G & T Custom Farming, AB
Gerald Willsie, AB
Graff Simmentals, BC
Grant & Tanya Chittick, AB
Grant Bailey, AB
Grimm Ranches, AB
Gusse Farms, AB
Haddie Simmentals, ON
Handhills Farming Ltd, AB
Harder Cattle Co, AB
Harry Krause, AB
Harry Rodgers, AB
Heilman Farms, AB
Javier Jauregui, MEX
Jeff & Monica Harvey, AB
Jeff Sorenson, SD
Jeff Watson, SK
Jeremy & Daneel Abt, AB
Jessy Sheppard, AB
Jet Dairy Farms Ltd, AB
John Damen, AB
Jordan Livestock, AB
Justin Wagner, AB
K.G.M. Welding Ltd., AB
Kamlah Farms Ltd., AB
Kathol Simmental Ranch, AB
Keet Simmentals, SK
Kevin Olmstead, AB
Kirk Sorenson, AB
Kotha Cattle, AB
KSL Simmentals, AB
Kulp Genetics, PA
Langer Fleckvieh, AB
Laraleigh Simmentals, AUS
Larouche Farms, AB
Leonard & Brenda Knight, AB
Lyle Breitreuz, AB
M & R Damen Farms, AB
Mac Oberle, SK
Mackenzie Skeels, AB
Mader Ranches, AB
Mark Warren, AB
MCG Simmentals, AB
Micheal Jennings, AB
Micheal Knight, AB
Morleen Farms, ON
N Bar Cattle Co, AB
Nick & Camille Jenkins, AB
Nick Orlick, AB
Operadora Genetica Bovina, MEX
Park Letts, AB
Parker Farms, AB
Paulgaard Farms, AB
Pete Fraser, AB
Peter & Cec Dykstra, AB
Pinto Cow Ranch, AB
Rancho ADE, MEX
Randy & Shirley Ingram, AB
Raymond Chittack, AB
Red Iron Simmentals, BC
Red Willow Ranch, SK
RichMc Farms Ltd, MB
Rick & Evelyn Sanderson, AB
Ricky Leger, AB
Rob Sweet, AB
Rodney Wiebe, BC
Rosefield Simmentals, BC
Sagwich Land & Livestock, OR
Schwengler Farms, AB
Scotsford Colony, AB
Shady Lane Farms, ON
Simpson Cattle Co., AB
Sjorgren Farms, AB
South Peace Colony, BC
Steve Prediger, AB
Steve Saruga, AB
Stone Simmentals, AB
Stuart & Karen Shaw, AB
Todd Simmentals, PQ
Tom Cunningham, ON
Travis & Lynn Trask, BC
Trenson Farms Ltd., AB
Tyco & Sons Ltd, AB
Valley's Edge Farm Ltd, AB
Wallgren Farms, AB
Walt & Val Hedges, BC
Wendy Pellett, AB
Westman Farms, AB
Westway Farms, AB
Wild Bronco Ranch, AB
Wyatt Day, AB
Zingre Farms, BC